

Form 1-S.T.C. 49725 MARSHALL & BRUCE CO. HARRISBURG

1- J.B.S. Adams & Bessie Adams
1- Edna Winnie & Matt Ridge
48-49-50-51-52-53-54-55-56-57-58-59

N.W. OF N.W.

N.E. OF N.W.

N.W. OF N.E.

N.E. OF N.E.

1945-46-47-48-49-50-51-52-53-54-55-56-57

1945-46-47-48-49-50-51-52-53-54-55-56-57-58-59

S.W. OF N.W.

S.E. OF N.W.

S.W. OF N.E.

S.E. OF N.E.

1958-59 Mrs. Jas. F. Watts

1945-46-47-48-49-50-51-52-53-54-55-56-57-58-59 Mrs. Jas. F. Watts

N.W. OF S.W.

N.E. OF S.W.

N.W. OF S.E.

N.E. OF S.E.

Madison County (Alms House)

Park

1945-46-47-48-49-50-51-52-53-54-55-56-57-58-59

S.W. OF S.W.

S.E. OF S.W.

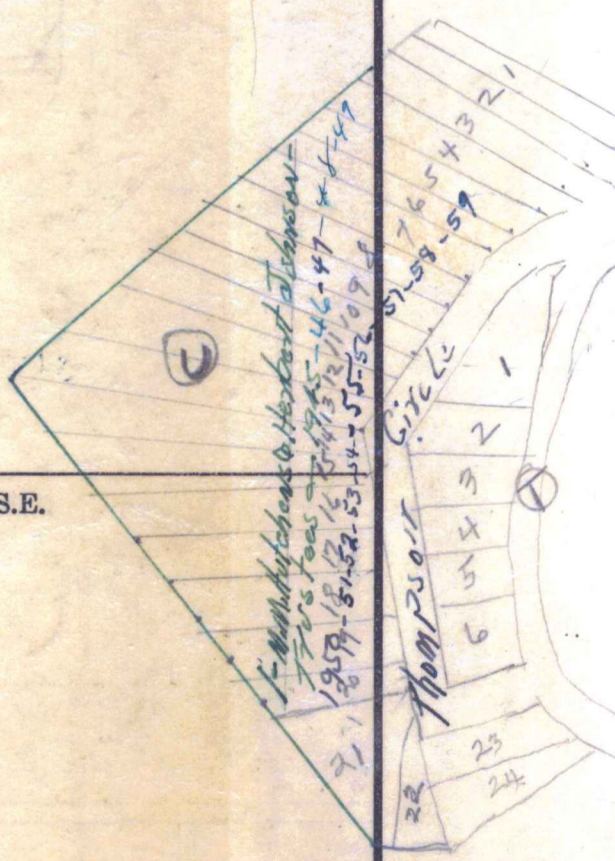
S.W. OF S.E.

S.E. OF S.E.

Madison

State

1957-58-59 Mrs. Jas. F. Watts



Alms House