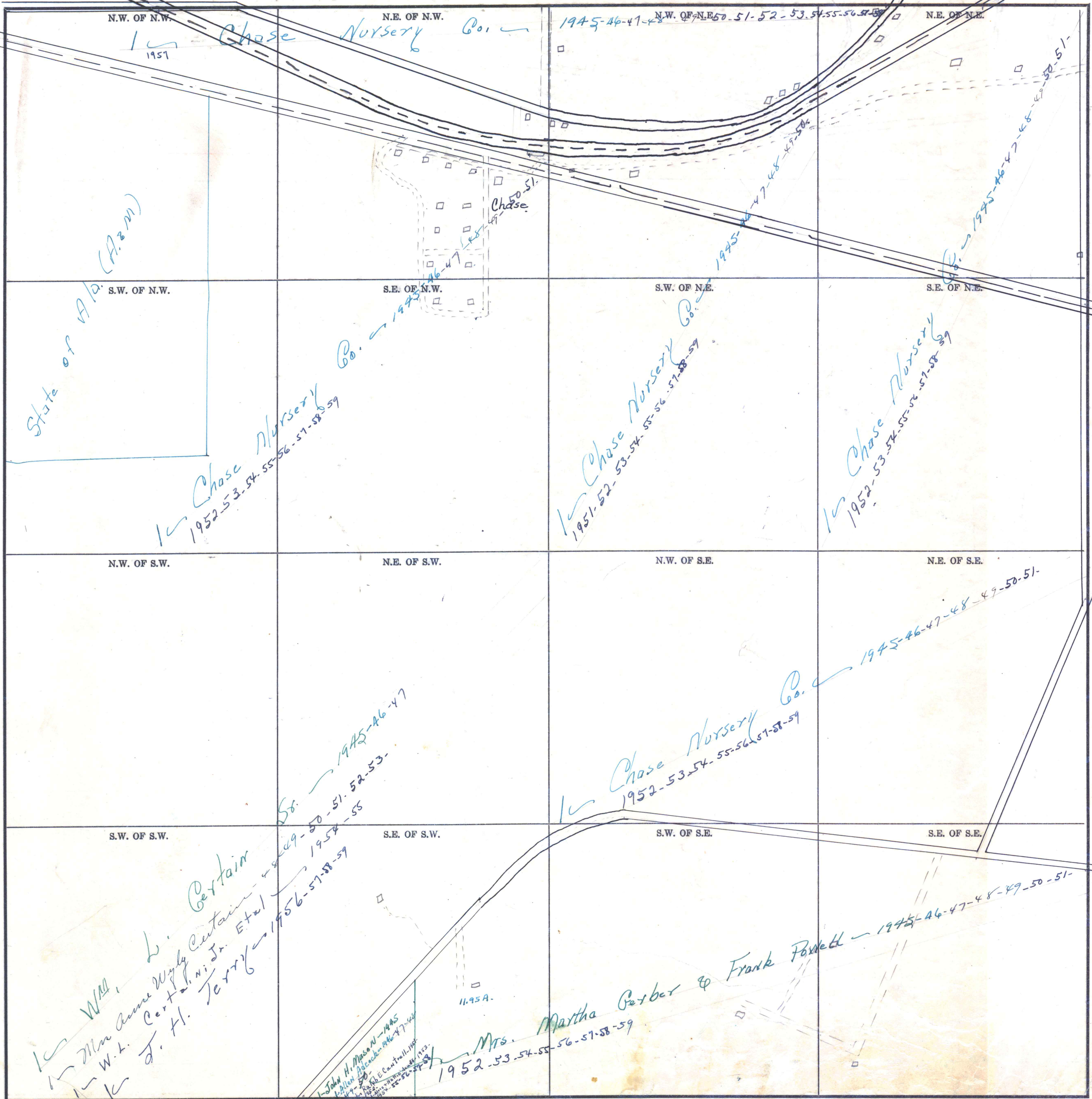


Form 1-S.T.C. 49725 MARSHALL & BRUCE CO. MINN.



State of Minn. (A.B.M.)

N.W. OF N.W. 1951 Chase Nursery Co.

N.W. OF N.E. 1945-46-47-48-49-50-51-52-53-54-55-56-57-58-59 N.E. OF N.E.

S.W. OF N.W. Chase Nursery Co. 1952-53-54-55-56-57-58-59

S.E. OF N.W. Chase Nursery Co. 1951-52-53-54-55-56-57-58-59

S.E. OF N.E. Chase Nursery Co. 1952-53-54-55-56-57-58-59

N.W. OF S.W. N.E. OF S.W. Chase Nursery Co. 1945-46-47-48-49-50-51-52-53-54-55

N.W. OF S.E. N.E. OF S.E. Chase Nursery Co. 1945-46-47-48-49-50-51-52-53-54-55-56-57-58-59

S.W. OF S.W. S.E. OF S.W. Wm. L. Certain Mrs. Anne Wyle Certain W.H. Certain Jr. Et al J. H. Terry 1956-57-58-59

S.W. OF S.E. S.E. OF S.E. Mrs. Martha Barber & Frank Foxwell 1945-46-47-48-49-50-51-52-53-54-55-56-57-58-59 John H. Mason - 1945 Wm. L. Certain - 1947 W.H. Certain - 1947