

5466  
1800  
5646

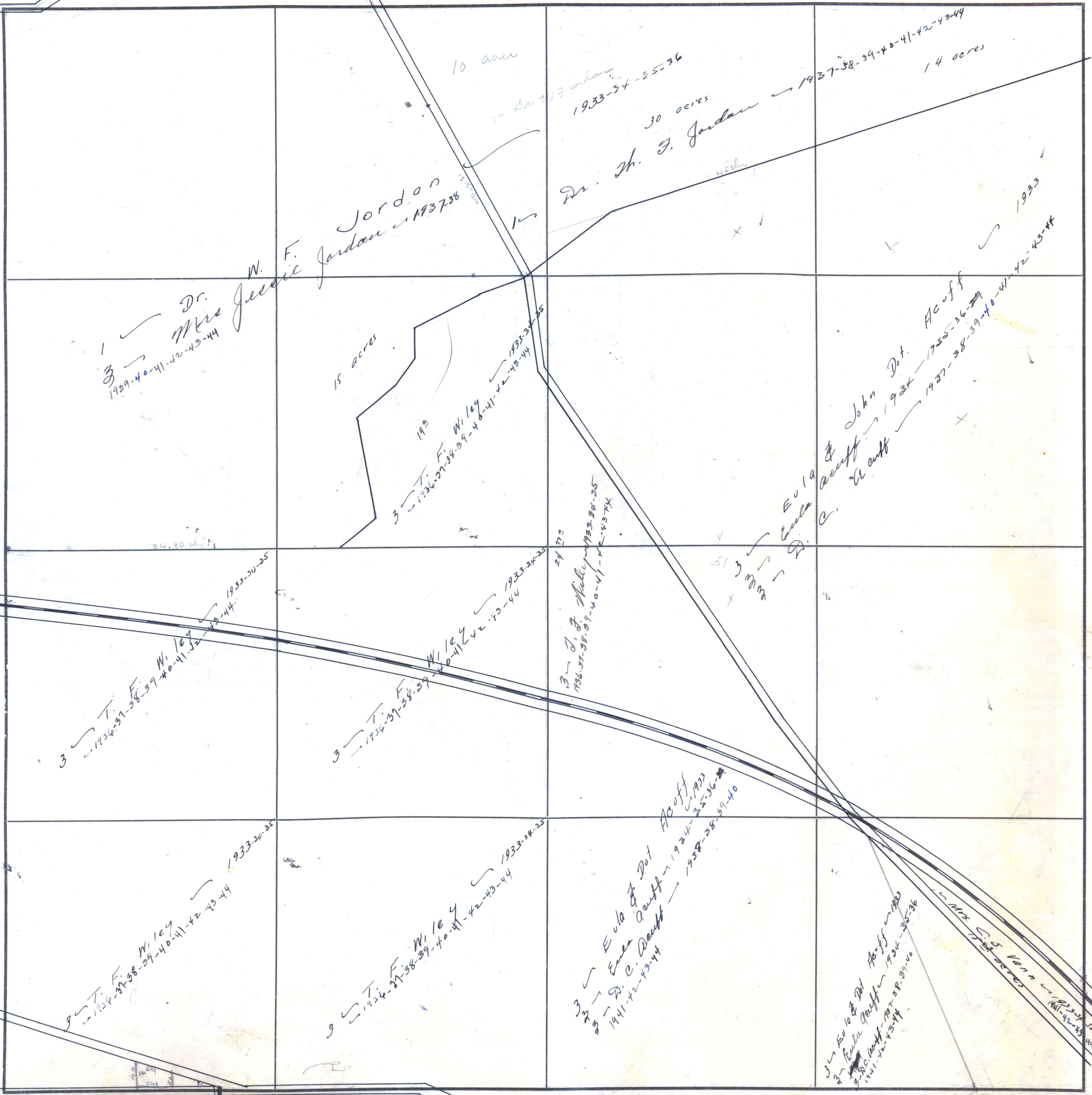
3466.49  
6738  
356383

99.75  
3071  
3049

3330.49  
90.25  
56.72  
3486.49

2980  
16160  
9140

5460  
9140  
200



COUNTY \_\_\_\_\_

Scale—300 Ft.—1 inch

Handwritten notes and scribbles at the bottom right corner, including a date "1938-39" and other illegible markings.