

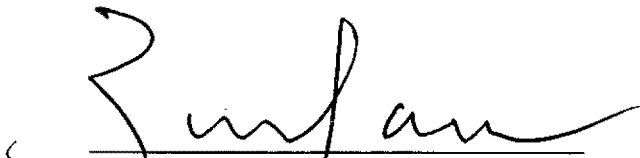
**ORDER: ADOPT LAFAYETTE COUNTY PLANNING COMMISSION'S  
RECOMMENDATION TO APPROVE MAGNOLIA MATERIALS, LLC'S  
PRELIMINARY SITE PLAN**

Motion was made by Greg Bynum, duly seconded by Scott Allen, to adopt Lafayette County Planning Commission's recommendation to approve Magnolia Materials, LLC Preliminary Site Plan.

The vote on the motion was as follows:

Supervisor Brent Larson, voted yes  
Supervisor John Morgan, absent  
Supervisor Tim Gordon, voted no  
Supervisor Scott Allen, voted yes  
Supervisor Greg Bynum, voted yes

After the vote, President Larson, declared the motion carried, this the 5<sup>th</sup> day of January, 2026.

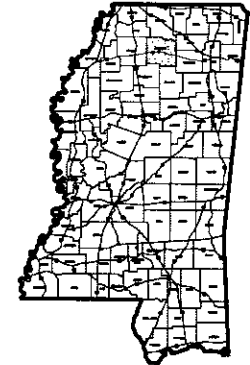
  
\_\_\_\_\_  
**Brent Larson, President  
Board of Supervisors**

  
\_\_\_\_\_  
**Mike Roberts, Chancery Clerk**

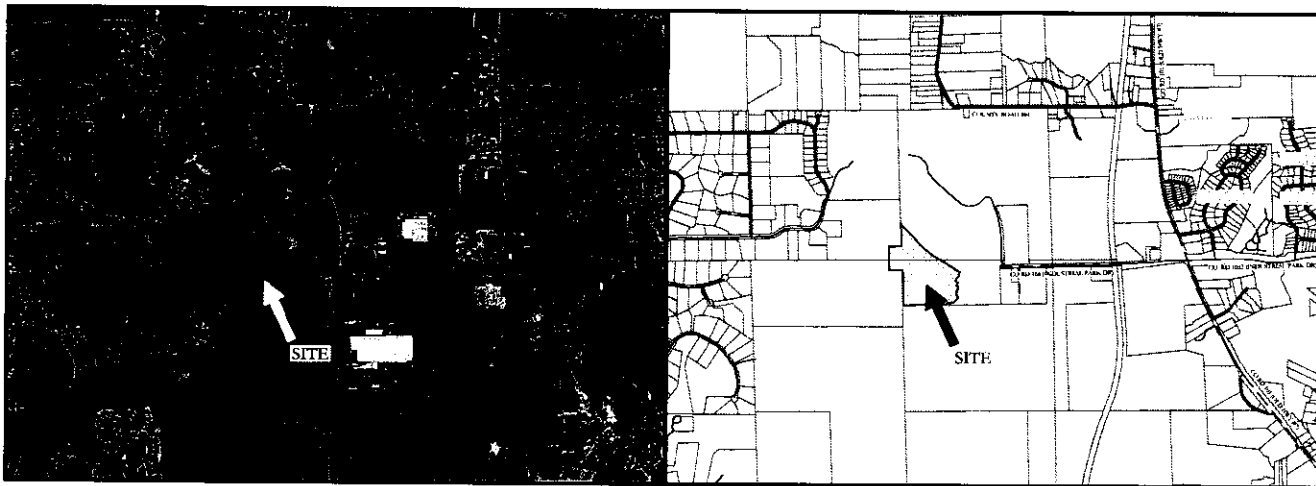


SITE PLAN & CONSTRUCTION PLANS  
FOR  
**MAGNOLIA MATERIALS**  
(HOT MIX ASPHALT BATCH PLANT)

L A F A Y E T T E C O . , M I S S I S S I P P I



**LOCATION MAP**  
N.T.S.



**AERIAL MAP**  
SCALE: 1"=100'

**VICINITY MAP**  
SCALE: 1"=1/4MI

**DEVELOPER:**

MAGNOLIA MATERIALS, LLC  
31 HWY 328  
OXFORD, MS 38655

**CIVIL ENGINEER:**



GRANBERRY & ASSOCIATES  
1686 PADINGTON PARK LANE  
GERMANTOWN, TN 38138  
PH: 662.312.9672  
jgranberry@mccartygranberry.com

**SURVEYOR:**



WILLIAMS ENGINEERING CONSULTANTS, LLC  
720 NORTH LAMAR BLVD., STE. A  
OXFORD, MS 38655  
PH: 662.236.9675  
rdaniels@williamsec.com



IF, DURING CONSTRUCTION, THE ENGINEER FINDS IT NECESSARY TO CHANGE THE  
PLANS, DIMENSIONS, PROFILES, GRADES, SECTIONS, QUANTITIES OR IF  
SUCH CHANGES ARE REQUIRED FOR ANY OTHER REASON, THE FINAL QUANTITIES  
WILL BE RE-COMPUTED BASED ON THE PLAN CHANGES, AS A RESULT OF AUTHORIZED  
CHANGES. ANY AND ALL MAJOR CHANGES MUST ALSO BE APPROVED BY THE LOCAL  
GOVERNING AGENCY.

**INDEX OF SHEETS**

COVER SHEET.....	0
GENERAL NOTES.....	1
EXISTING CONDITIONS.....	2
SITE PLAN.....	3
SITE PLAN - ASPHALT PLANT LAYOUT.....	4
GRADING & DRAINAGE PLAN.....	5
GRADING & DRAINAGE TABLES.....	6
DETENTION POND GRADING & DETAILS.....	7
SPOT ELEVATIONS.....	8
EROSION CONTROL PLAN - PHASE 1.....	9
EROSION CONTROL PLAN - PHASE 2.....	10
EROSION CONTROL PLAN - PHASE 3.....	11
UTILITY PLAN.....	12
ON-SITE WASTEWATER TREATMENT PLAN.....	13
CONSTRUCTION DETAILS.....	14
DRAINAGE DETAILS.....	15
SEWER DETAILS.....	16
EROSION CONTROL DETAILS.....	17
EROSION CONTROL DETAILS - SEDIMENT BASIN (MIX/T/BAS-D).....	18
DUMPSTER DETAILS.....	D.1
LANDSCAPE PLAN.....	L.1.0
LANDSCAPE DETAILS.....	L.2.0

**GENERAL NOTES**

1. THE CONTRACTOR SHALL NOTIFY THE CITY OF OXFORD ENGINEERING DEPARTMENT AT (802) 232-2308 AND SHALL NOTIFY THE LAFAYETTE COUNTY PLANNING DEPARTMENT AT (862) 238-0237 BEFORE COMMENCING CONSTRUCTION.
2. THE CONTRACTOR SHALL BE RESPONSIBLE FOR NOTIFYING ANY UTILITY COMPANY WHICH MAINTAINS A UTILITY LINE WITHIN THE BOUNDARIES OF THE PROJECT BEFORE THE INITIATION OF ANY CONSTRUCTION ON THE PROJECT OR IN THE STREETS BORDERING THE PROJECT. THE CONTRACTOR SHALL ALSO ASSUME RESPONSIBILITY FOR ANY DAMAGE INCURRED BY ANY UTILITY COMPANY TO THEIR UTILITY LINES WHETHER SHOWN ON THE CONSTRUCTION PLANS OR NOT, DURING WORK ON THE PROJECT.
3. IT SHALL BE THE RESPONSIBILITY OF THE CONTRACTOR TO PROTECT EXISTING STRUCTURES SUCH AS PIPES, INLETS, CURBS, APRONS, ETC., FROM DAMAGE WHICH MIGHT OCCUR DURING CONSTRUCTION. EXISTING ONE SHALL BE EXERCISED WHEN EXISTING CONSTRUCTION ACTIVITIES AROUND SUCH STRUCTURES. THE CONTRACTOR SHALL REPLACE OR REPAIR AS DIRECTED BY THE ENGINEER. ANY STRUCTURES DAMAGED DURING THE LIFE OF THE CONTRACT, NO PAYMENT SHALL BE MADE FOR REPLACEMENT OR REPAIR OF DAMAGED ITEMS.
4. EXISTING UNDERGROUND UTILITY LINES ARE SHOWN ON THE DRAWINGS BASED UPON THE BEST INFORMATION AVAILABLE TO THE ENGINEER. THE ENGINEER CANNOT AND DOES NOT WARRANT THAT THIS INFORMATION IS COMPLETE OR ACCURATE. THE CONTRACTOR SHALL COORDINATE DIRECTLY WITH MISSISSIPPI 811 AND WITH THE INCLUDED UTILITY COMPANIES TO GET UNDERGROUND UTILITY LINES FIELD LOCATED IN ADVANCE OF CONSTRUCTION ACTIVITIES.
5. ALL HOLEY CUT AND/OR FILLED AREAS LACKING ADEQUATE VEGETATION SHALL BE SEEDS, FERTILIZED, MULCHED AND/OR SOODED AS REQUIRED TO EFFECTIVELY PREVENT SOIL EROSION PER STATE REGULATIONS.
6. ALL CONSTRUCTION WITHIN PUBLIC easements and RIGHT-OF-WAYS SHALL MEET THE CITY OF OXFORD AND/OR LAFAYETTE COUNTY STANDARD SPECIFICATIONS, AS APPLICABLE. CONSTRUCTION WITHIN PRIVATE DEVELOPMENTS (PRIVATE STREETS, DRIVES, ALLEYS AND ASSOCIATED INFRASTRUCTURE) SHALL BE REVIEWED ON A CASE-BY-CASE BASIS.
7. THE CONTRACTOR MUST HAVE WRITTEN APPROVAL FROM THE PROJECT AND THE CITY ENGINEER BEFORE ANY CHANGE IN DESIGN IS MADE.
8. FOR INFORMATION CONCERNING THE UTILITIES, CALL 1-800-351-1111 OR THE RESPECTIVE ORGANIZATION.  
 WATER - CITY OF OXFORD UTILITIES/ENGINEERING  
 SANITARY SEWER - CITY OF OXFORD UTILITIES/ENGINEERING  
 GAS - CENTENNIAL ENERGY  
 ELECTRIC - NORTHEAST MISSISSIPPI ELECTRIC ASSOCIATION (MEMBER) & TENNESSEE VALLEY AUTHORITY (TVA)  
 TELEPHONE/FIBER/OPTIC COMMUNICATIONS - AT&T AND C-SPEAR  
 CABLE TV - MISSISSIPPI BROADCASTING
9. SEVENTY-TWO (72) HOURS BEFORE BEGINNING ANY EXCAVATION, THE CONTRACTOR SHALL CALL 1-800-351-1111 FOR THE LOCATION OF UNDERGROUND UTILITIES. CALL CITY OF OXFORD, PUBLIC WORKS/UTILITIES FOR THE LOCATION OF WATER LINES AND SEWER LINES.
10. THE CONTRACTOR SHALL NOT ENTER UPON NOR CAUSE DAMAGE TO ANY ADJACENT PROPERTIES WITHOUT WRITTEN PERMISSION FROM SAID PROPERTY OWNERS.
11. ALL FILL LOTS SHALL BE COMPACTED TO A MINIMUM DENSITY OF 95% OF THE STANDARD PROCTOR DENSITY (ASTM D-155) WITH SUITABLE FILL MATERIAL ACCEPTABLE TO TESTING LABORATORY. MAXIMUM LIFT TO BE 6".
12. ALL CONCRETE SHALL BE 4,000 PSI, AIR ENTRAINED.
13. ANY EXISTING UTILITIES REQUIRING RELOCATION OR REMOVAL SHALL BE THE DEVELOPER'S RESPONSIBILITY.
14. ALL TRAFFIC CONTROL DEVICES ON THIS PROJECT SHALL COMPLY WITH PART IV OF THE "MANUAL ON UNIFORM TRAFFIC CONTROL DEVICES" (MUTCD), LATEST EDITION.
15. ANY CONSTRUCTION STAKING INCURRED WILL BE THE RESPONSIBILITY OF THE CONTRACTOR. COST SHALL BE ASSIGNED BY OTHER BID ITEMS.
16. MISSISSIPPI STANDARD SPECIFICATIONS FOR STATE AND BRIDGE CONSTRUCTION, THE MOST CURRENT EDITION, AS PUBLISHED BY THE OFFICE OF STATE AND ROAD CONSTRUCTION SHALL GOVERN THE MATERIALS AND CONSTRUCTION TECHNIQUES OF THIS PROJECT.
17. ALL DRAINAGE PIPE WITHIN THE PROJECT LIMITS, IF PROPOSED CONSTRUCTION, SHALL BE VIDEO-INSPECTED BY THE CONTRACTOR AND SUBMITTED TO THE CITY OF OXFORD PRIOR TO FINAL ACCEPTANCE. ANY PIPE, DAMAGED OR OUT-OF-JOINT, SHALL BE REPAIRED OR REPLACED BY THE CONTRACTOR AT NO COST TO THE PROJECT.
18. COST FOR SAW-CUTTING OF EXISTING PAVEMENTS OR CURBS/SIDEWALKS SHALL BE ASSIGNED IN OTHER ITEMS.

**WATER NOTES**

1. ALL WATER MAIN LINES SHALL BE 8" DIAMETER (MIN.) DUCTILE IRON PIPE, CLASS 300.
2. ALL WATER SERVICE LINES SHALL BE 1" MINIMUM DIAMETER AND SHALL MEET THE CITY OF OXFORD SPECIFICATIONS.
3. CONSTRUCTION AND MATERIALS FOR THE WATER DISTRIBUTION SYSTEM SHALL CONFORM TO THE SPECIFICATIONS OF THE MISSISSIPPI DEPARTMENT OF HEALTH AND THE CITY OF OXFORD.
4. WATER MAINS SHALL BE INSTALLED AT LEAST 10 FEET HORIZONTALLY AND 18 INCHES VERTICALLY FROM ANY SEWER MAIN OR MANHOLE (UNLESS OTHERWISE SPECIFIED). WATER MAINS SHALL CROSS OVER SEWER MAINS. THE ABOVE REQUIREMENTS MAY BE Bypass IF PIPE SECTIONS ARE CENTERED TO PROVIDE MAXIMUM SPACING OF THE JOINTS OF BOTH WATER AND SEWER MAINS AND A VERTICAL SEPARATION OF AT LEAST 18 INCHES (WATER OVER SEWER). THE DISTANCES AND SPACING MENTIONED ABOVE ARE CLEAR DISTANCES, AND WHENEVER THE DISTANCE CAN NOT BE MET, THE MAIN MUST BE PLACED IN CASING.
5. THE CONTRACTOR SHALL VERIFY LOCATION AND SIZE OF EXISTING WATER MAINS PRIOR TO COMMENCING BORING OR CONNECTION OPERATIONS. THE CONTRACTOR SHALL PROVIDE NECESSARY ADJUSTMENTS TO BOTH NEW AND EXISTING WATER LINES TO ALLOW CONNECTION AND INSTALLATION.
6. WATER MAINS AND SERVICES MUST HAVE A MINIMUM OF 36" CLEARANCE.
7. SPACING OF FIRE HYDRANTS BY WATER, BUT SHALL IN NO CASE BE SPACED FARTHER THAN 500' APART. SPACING SHALL BE MEASURED LINEARLY ALONG STREET FRONTAGE.
8. CONNECTION SHALL MARK WATER CROSSINGS OF COMMON OPEN SPACE AREAS WITH CHELLED "W" ON CURB OR SIDEWALK AT CROSSING LOCATIONS.
9. METER BOXES MEETING THE CITY OF OXFORD'S REQUIREMENTS SHALL BE PROVIDED FOR EACH LOT BY THE DEVELOPER AND INSTALLED TO GRADE.
10. ALL TAPS MADE BY CITY OF OXFORD ARE TO BE PAID FOR BY CONTRACTOR/DEVELOPER.
11. EXACT LOCATION OF IRRIGATION LINE & METER WITH BACKFLOW PREVENTER SHALL BE DETERMINED BY LANDSCAPE ARCHITECT. SEE LANDSCAPE PLAN FOR ADDITIONAL INFORMATION.
12. SUPPLEMENTAL WATER REQUIRED TO MAINTAIN AN ACCEPTABLE STATIC POOL IN THE POND SHALL BE PROVIDED AND INSTALLED THROUGH THE LANDSCAPING METER. EXACT LOCATION OF THE WATER SUPPLY LINES SHALL BE COORDINATED WITH THE LANDSCAPING AND IRRIGATION PLANS.
13. ALL CONNECTION STOPS SHALL BE FORD 3/4" FN 1000-30 ALL CRP COMPRESSION OR FORD 1" FN 1000-40 ALL CRP COMPRESSION.
14. ALL CURB STOPS SHALL BE FORD 1" X 1/2" P 3/4" BALL VALVE B11-3330 OR FORD 1" X 1/2" BALL VALVE B11-4448.

**SEWER NOTES**


1. SANITARY SEWER SHOULD BE Laid AT LEAST 10 FEET HORIZONTALLY AND 18" VERTICALLY FROM ANY EXISTING OR PROPOSED WATER MAIN, WITH THE WATER MAIN LOCATED ABOVE THE SEWER PIPE. SEWERS CROSSING WATER MAINS SHALL BE ARRANGED SO THAT THE SEWER JOINTS WILL BE DOWNSTREAM AND AS FAR AS POSSIBLE FROM THE WATER MAIN OR THE SEWER SHOULD BE DUCTILE IRON OR SHALL BE ENCASED IN DUCTILE IRON OR CONCRETE FOR A MINIMUM OF ONE FULL JOINT LENGTH ON EACH SIDE OF THE CROSSING.
2. ALL SANITARY SEWER MAINS AND SERVICES SHALL BE PVC 300-24. SEWER SERVICES SHALL BE A MINIMUM OF 6" IN DIAMETER, AND SHALL BE INSTALLED ON A MINIMUM 1% SLOPE.
3. CONSTRUCTION AND MATERIALS FOR THE SANITARY SEWER SYSTEM SHALL CONFORM TO THE SPECIFICATIONS OF THE MISSISSIPPI DEPARTMENT OF ENVIRONMENTAL QUALITY AND THE CITY OF OXFORD.
4. BEDDING MATERIAL SHALL BE REQUIRED BENEATH ALL SANITARY SEWER MAINS, UNLESS OTHERWISE SPECIFIED BY THE ENGINEER.
5. SEWER SERVICES SHALL BE EXTENDED TO A DISTANCE OF 5' MINIMUM BEHIND BACK OF SIDEWALK AND LOCATED WITH 2" DIA. LOCATION PIPE.
6. CONNECTION SHALL MARK SEWER CROSSINGS OF COMMON OPEN SPACE AREAS WITH CHELLED "S" ON CURB OR SIDEWALK AT CROSSING LOCATIONS.
7. SEWER SERVICE SHOWN FOR APPROXIMATE LOCATION. EXACT LOCATION SHALL BE COORDINATED WITH THE BUILDING ARCHITECT AND SHALL BE SPACED 10' FROM WATER SERVICES, WHERE PRACTICAL.
8. ALL STORM DRAIN AND SEWER SHALL BE INSPECTED BY CAMERA AND IN THE PRESENCE OF A CITY REPRESENTATIVE. ANY DAMAGE OR DEFICIENCIES SHALL BE REPAIRED AND REPLACED AND OR REPAIRED IN ACCORDANCE TO MANUFACTURER'S INSTRUCTIONS AT THE DISCRETION OF THE CITY. ALL REPAIRS SHALL BE MADE PRIOR TO CITY ACCEPTANCE.
9. MANHOLES SHALL BE WATERPROOFED.
10. DEFLECTION TESTS SHALL BE PERFORMED ON ALL FLEXIBLE PIPE. THE TEST SHALL BE CONDUCTED AFTER THE FINAL UNDEVELOP HAS BEEN IN PLACE AT LEAST 30 DAYS AND PIPE SHALL EXCEED A DEFLECTION OF 3%. IF THE DEFLECTION TEST IS TO BE RUN USING A ROBE BALL OR MANHOLE, IT SHALL HAVE A DIAMETER EQUAL TO 50% OF THE INSIDE DIAMETER OF THE PIPE. THE TEST SHALL BE PERFORMED WITHOUT MECHANICAL PULLING DEVICES.
11. ALL SANITARY SEWER CLEANOUTS LOCATED IN IMPERVIOUS AREA SHALL BE TRAFFIC RATED.

**EROSION CONTROL NOTES**

1. EROSION CONTROL MEASURES ARE NOT LIMITED TO THE SPECIFIED PRACTICES; HOWEVER, ALTERNATIVE MEASURES MUST BE AS EFFECTIVE IN CONTROLLING EROSION AND SEDIMENTATION.
2. IF THE EROSION CONTROL MEASURES SELECTED AND CONSTRUCTED FAIL TO ADEQUATELY CONTROL EROSION AND CITY-SPECIFIC SOILS TRANSPORT, ALTERNATIVE METHODS MUST BE USED AND APPROVED BY THE DIVISION OF ENGINEERING AND MUST IMMEDIATELY CONTROL EROSION AS A VIOLATION OF MISSISSIPPI STATE LAW AND WILL NOT BE PERMITTED.
3. ANY EROSION CONTROL MEASURES SHOWN HERE ON ARE INTENDED AS A MINIMUM GUIDE. THE CONTRACTOR SHALL BE RESPONSIBLE FOR MAINTAINING EROSION CONTROL MEASURES TO COMPLY WITH ALL APPLICABLE CITY, STATE AND FEDERAL LAWS.
4. CLEARING AND GRUBBING SHALL BE THE MINIMUM NECESSARY FOR GRADING AND EQUIPMENT OPERATION.
5. SEDIMENT CONSTRUCTION SHALL BE USED IN ORDER TO MINIMIZE EXPOSURE TIME OF CLEARED AREA.
6. AVOID GRADING ACTIVITIES DURING PERIODS OF HEAVY EROSION RAINFALL.
7. STABILIZE CLEARED AREA BEFORE PROCEEDING TO CLEAR ANOTHER BY TEMPORARILY OR PERMANENTLY PROTECTING THE DISTURBED SOIL SURFACE FROM RAINFALL IMPACTS AND RUNOFF.
8. EROSION AND SEDIMENT CONTROL MEASURES MUST BE IN PLACE AND FUNCTIONAL PRIOR TO BEGINNING SITE MOVING OPERATIONS.
9. ALL EROSION CONTROL MEASURES MUST BE PROPERLY CONSTRUCTED AND MAINTAINED THROUGHOUT THE CONSTRUCTION PERIOD.
10. EROSION CONTROL MEASURES MUST BE APPROPRIATELY ADJUSTED, BELIEVED AND MODIFIED IN ACCORDANCE WITH APPLICABLE REQUIREMENTS AND RETURNED TO ADDRESS CHANGING SITE CONDITIONS AS THE PROJECT PROGRESSES.
11. INSPECT ALL EROSION AND SEDIMENT CONTROL MEASURES TWICE WEEKLY, A MINIMUM OF 72 HOURS PRIOR AND AFTER EACH RAINFALL PERIOD EXCEEDING DESIGN FLOW REQUIREMENTS. DAILY CHECKING IS REQUIRED DURING PROLONGED RAINFALL. MAINTAIN AND REPAIR AS NEEDED TO MAINTAIN A PERMANENT BUILT LOG. MAINTAIN A PERMANENT LOG OF CHECKS AND MAINTENANCE MEASURES.
12. KEEP CONSTRUCTION DEBRIS FROM ENTERING STREETS, DITCHES AND STREAM CHANNELS.
13. PROMPTLY BACKFILL AND STABILIZE TRENCHES AND/OR PITS.
14. DESIGNATE A SPECIFIC QUALIFIED INDIVIDUAL TO BE RESPONSIBLE FOR EROSION AND SEDIMENT CONTROL AND TO KEEP THE PERMANENT JOB LOG. THE PERSON RESPONSIBLE FOR MAINTAINING THE EROSION CONTROL MEASURES AND LOG SHALL HAVE THE APPROPRIATE TRAINING AS REQUIRED BY MISSISSIPPI. A COPY OF THIS CERTIFICATION SHALL BE MAINTAINED AT THE JOB SITE.
15. DO NOT PLACE EXCAVATION MATERIAL FROM THE PIPE TRENCHES BETWEEN THE TRENCH AND STREETS, DITCHES OR STREAMS. PLACE MATERIAL ON THE UP SLOPE SIDE OF THE EXCAVATION SUCH THAT ANY EROSION FROM IT IS CAUGHT BY THE TRENCH.
16. BUFFER ZONES SHALL BE PROVIDED TO MEET THE MINIMUM REQUIREMENTS OF THE MISSISSIPPI CONSTRUCTION GENERAL PERMIT.
17. DO NOT DESTROY, REMOVE OR DESTROY VEGETATIVE GRASS COVER MORE THAN 14 CALENDAR DAYS PRIOR TO GRADING.
18. DO NOT UNNECESSARILY REMOVE GRASS, HOWEVER, WHEN NECESSARY, TREES AND SHRUBS SHOULD BE CUT SO THAT THEY FALL AWAY FROM THE OPEN.
19. ANY AREA THAT WILL REMAIN UNGRADED FOR MORE THAN 14 CALENDAR DAYS SHALL HAVE APPROPRIATE ANNUAL VEGETATION FOR TEMPORARY SOIL STABILIZATION.
20. APPLY PERMANENT SOIL STABILIZATION WITH PERMANENT VEGETATION AS SOON AS POSSIBLE, BUT NO MORE THAN 14 CALENDAR DAYS AFTER FINAL GRADING.
21. EROSION CONTROL MEASURES SHALL BE MAINTAINED AT ALL TIMES. IF FULL IMPLEMENTATION OF THE APPROVED PLAN DOES NOT PREVENT EXISTING EROSION CONTROL, THEN ADDITIONAL EROSION AND SEDIMENT CONTROL MEASURES SHALL BE IMPLEMENTED TO CONTROL AND/OR TREAT THE SEDIMENT BEFORE LAND AND/OR AQUATIC DISTURBANCE MAY CONTINUE.
22. ALL EROSION CONTROL MEASURES SHALL MEET THE MINIMUM REQUIREMENTS OF ALL FEDERAL, STATE AND LOCAL AGENCIES.
23. PROTECT INLETS DURING CONSTRUCTION. KEEP SEDIMENT OUT OF THE STORM DRAINAGE SYSTEM. MAINTAIN PROTECTION AS CONSTRUCTION PROGRESSES. INSPECT AND MAINTAIN INLET PROTECTIONS AS NECESSARY TO INSURE SUFFICIENT TRAPPING OF SEDIMENT.
24. IN ACCORDANCE WITH THE CITY OF OXFORD ISHA PERMIT, ALL STATE/LOCAL PERMITS ARE REQUIRED TO BE OBTAINED AND IMPLEMENTED BEFORE START-UP OF ANY CONSTRUCTION ACTIVITIES, INCLUDING, BUT NOT LIMITED TO, LAND AND/OR AQUATIC DISTURBANCE.
25. INSTALL STORM AND UNIMPROVED MULCH SOCKS AND/OR Silt FENCE ALONG THE EDGE OF ALL BACKFILLS AND CUTS ON THE DOWNHILL SIDE OF ANY STOCKPILED SOIL AND ALONG ANY BARRIERS IN CLEARED AREAS TO PREVENT EROSION INTO DITCHES. PLACE Silt FENCE ALONG CONTIGUOUS, NOT ADJACENT. DO NOT ALLOW Silt FENCE TO CAUSE CONCENTRATED FLOW.
26. DIVERT ALL SURFACE WATER FLOWING TOWARD THE CONSTRUCTION AREA AROUND THE CONSTRUCTION AREA BY THE USE OF DICES, BARRIERS, CHANNELS OR SEDIMENT TRAPS AS NECESSARY.
27. IF REQUIRED, PLACE CONTAINERS CONSTRUCTED WITH SANDBAGS, PLASTIC OR NON-ERODIBLE SHEETING ON EITHER SIDE OF PROPOSED LINE CROSSINGS AND EXTEND FROM DRAIN TO DRAIN TO PREVENT THE FLOW OF RAINFALL INTO THE CONSTRUCTION AREA. HOLD WATER FROM CONTAINERS OR EXCAVATIONS IN PROPERLY DESIGNED SETTLING BASINS, DRAINING PITS OR FILTER BASINS. IT IS AT LEAST AS CLEAR AS UPSTREAM WATER BEFORE DISCHARGING INTO SURFACE WATER. ENSURE THAT DISCHARGE DOES NOT CAUSE EROSION AND SEDIMENTATION.
28. DO NOT USE DITCHES FOR THE TRANSPORT OF EQUIPMENT. USE A STABILIZED PAD OF GRASS AND PROPERLY SIZED ROCK FOR ACCESS TO ROAD CONSTRUCTION. UTILIZE EROSION AND SEDIMENT CONTROL MEASURES AS INDICATED ON THE PLANS AND IN THE CURRENT EDITION OF THE MISSISSIPPI EROSION PREVENTION AND SEDIMENT CONTROL HANDBOOK WHERE DITCH CHANNELS ARE DESTROYED.

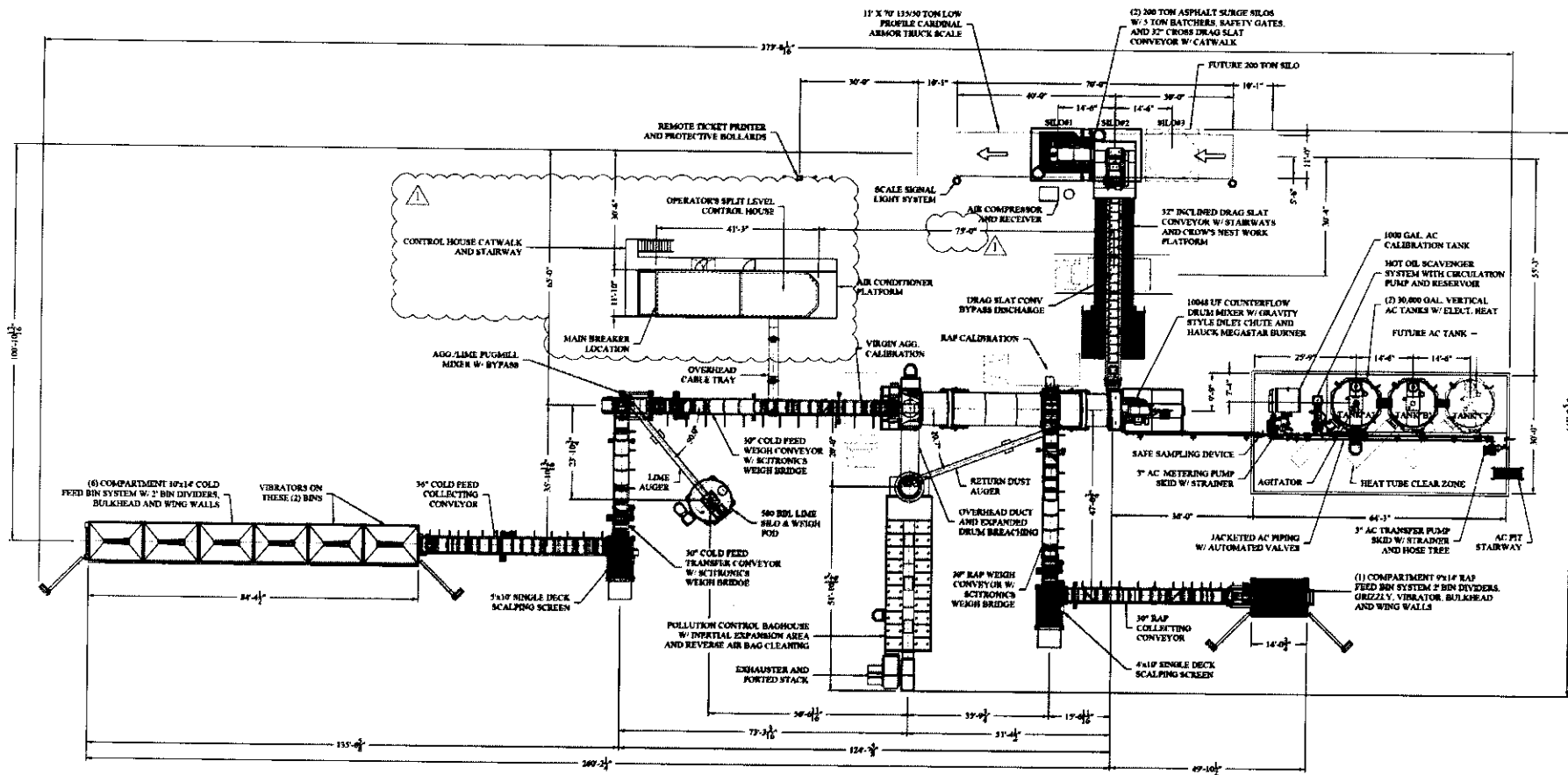
**COVERING AGENCY CONTACT INFORMATION:**

- LAFAYETTE COUNTY PLANNING AND DEVELOPMENT DEPARTMENT:  
300 NORTH LAUREL  
OXFORD, MS 38655  
PHONE: (662) 238-0237
- LAFAYETTE COUNTY ENGINEER:  
P.O. BOX 308  
OXFORD, MS 38655  
PHONE: (662) 238-1783
- LAFAYETTE COUNTY BUILDING INSPECTOR:  
300 NORTH LAUREL  
OXFORD, MS 38655  
PHONE: (662) 238-0237
- LAFAYETTE COUNTY FIRE DEPARTMENT:  
P.O. BOX 1353  
OXFORD, MS 38655  
PHONE: (662) 232-2880
- CITY OF OXFORD, PLANNING DEPARTMENT:  
107 COURTHOUSE SQUARE  
OXFORD, MS 38655  
PHONE: (662) 232-2305
- CITY OF OXFORD, ENGINEERING DEPARTMENT:  
107 COURTHOUSE SQUARE  
OXFORD, MS 38655  
PHONE: (662) 232-2306
- CITY OF OXFORD, UTILITIES DEPARTMENT:  
300 McLEARY DRIVE  
OXFORD, MS 38655  
PHONE: (662) 232-2373
- MISSISSIPPI DEPARTMENT OF ENVIRONMENTAL QUALITY (MDEQ):  
ENVIRONMENTAL PERMITS DIVISION  
OFFICE OF POLLUTION CONTROL  
P.O. BOX 2251  
JACKSON, MS 39225  
PHONE: (601) 961-5171
- MISSISSIPPI DEPARTMENT OF HEALTH (MSDH):  
WATER SUPPLY DIVISION  
370 E. WOODROW WILSON AVE  
JACKSON, MS 39216  
PHONE: (601) 378-9718
- MISSISSIPPI DEPARTMENT OF TRANSPORTATION (MDOT):  
150 US HWY 51  
BATONROUGE, MS 38809  
PHONE: (602) 955-4541

REVISION			APPROVAL DATE		DIVISION OF ENGINEERING GENERAL NOTES LAFAYETTE COUNTY, MS
ITEM NO.	DESCRIPTION OF CHANGE				
MAGNOLIA MATERIALS - HMA BATCH PLANT					
OWNER: MAGNOLIA MATERIALS, LLC ENGINEER: CRANBERRY & ASSOCIATES, LLC					
SURVEY: WILLIAMS, INC. DESIGN BY: J. CRANBERRY, P.E. DRAWN BY: J. CRANBERRY, P.E.		DATE: 11/20/2025 DATE: 12/15/2025 DATE: 12/15/2025		PROJECT NO.: 1020-145 BOOK: SCALE: N.T.S.	







EQUIPMENT LAYOUT PLAN  
ALMIX 10048 UF PLANT

LAYOUT NOTES:

- SEE ALMIX ASPHALT PLANT PLANS AND DETAILS FOR ASPHALT PLANT FOUNDATION AND STRUCTURE INFORMATION.

REVISION		
ITEM NO.	DESCRIPTION OF CHANGE	APPROVAL DATE



MAGNOLIA MATERIALS — HMA BATCH PLANT

OWNER: MAGNOLIA MATERIALS, LLC  
ENGINEER: CRUMBRAY & ASSOCIATES, LLC

DIVISION OF ENGINEERING

SITE PLAN — ASPHALT PLANT LAYOUT  
LAFAYETTE COUNTY, MS

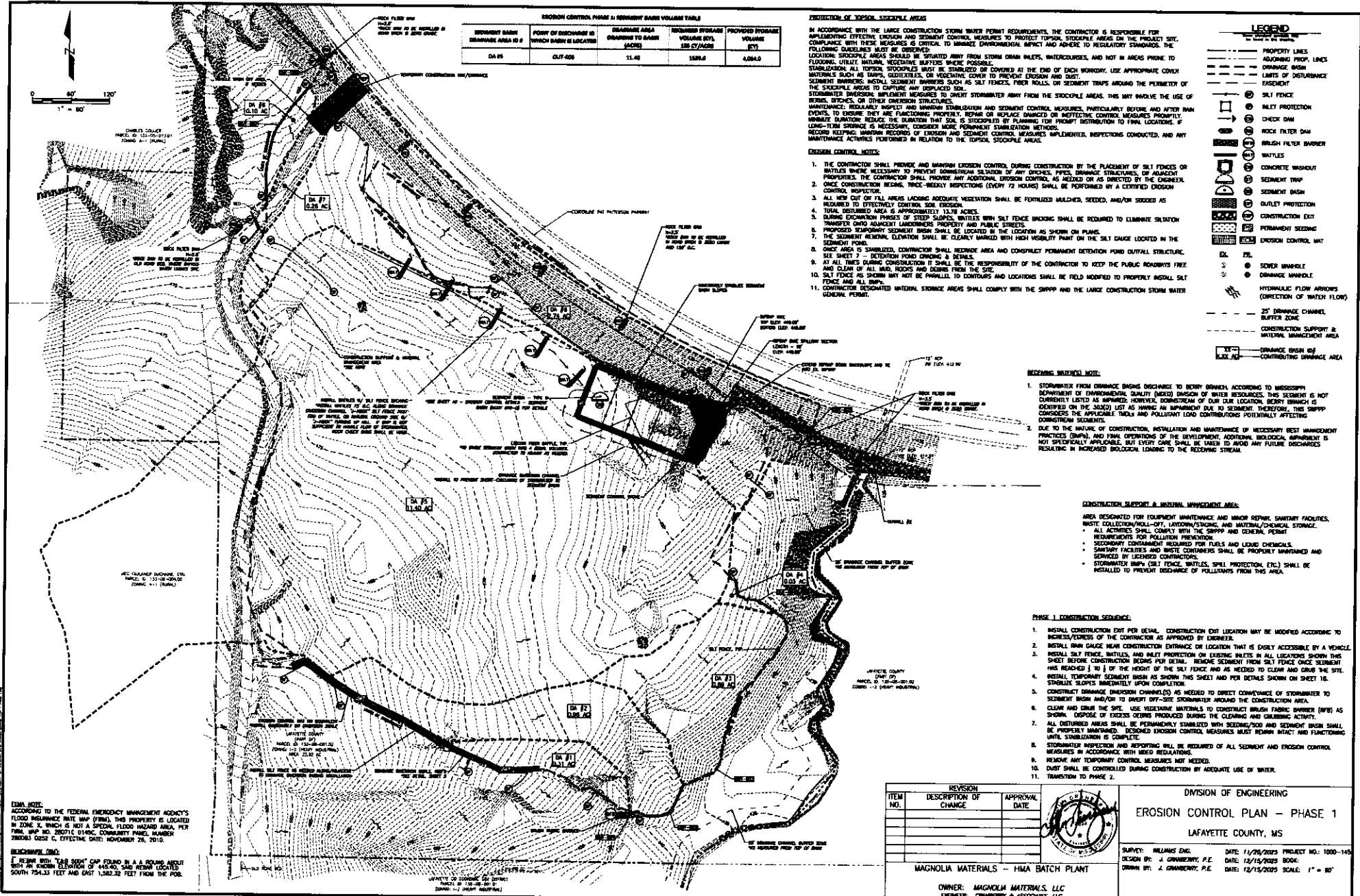
SURVEY: WILLIAMS ENG. DATE: 11/20/2023 PROJECT NO.: 1000-143  
DESIGN BY: J. CRUMBRAY, P.E. DATE: 10/15/2023 BOOK:  
DRAWN BY: J. CRUMBRAY, P.E. DATE: 12/13/2023 SCALE: A1:5











SEDIMENT BASIN	POINT OF DISCHARGE IN WHICH BASIN IS LOCATED	DRAINAGE AREA DRAINING TO BASIN (ACRES)	REQUIRED STORAGE VOLUME (CU YD)	PROPOSED STORAGE VOLUME (CU YD)
DA #5	CUT-008	11.40	1589.6	4,084.0

**PROTECTION OF TOPSOIL STOCKPILE AREAS**

IN ACCORDANCE WITH THE LARGE CONSTRUCTION STORM WATER PERMIT REQUIREMENTS, THE CONTRACTOR IS RESPONSIBLE FOR IMPLEMENTING EROSION AND SEDIMENT CONTROL MEASURES TO PROTECT TOPSOIL STOCKPILE AREAS ON THE PROJECT SITE. COMPLIANCE WITH THESE MEASURES IS CRITICAL TO MINIMIZE ENVIRONMENTAL IMPACT AND ADHERE TO REGULATORY STANDARDS. THE FOLLOWING MEASURES MUST BE IMPLEMENTED BY THE CONTRACTOR:

- LOCATING STOCKPILE AREAS SHOULD BE SITUATED AWAY FROM STORM DRAIN MILES, INTERCOURSES, AND NOT IN AREAS PRONE TO FLOODING (WETLANDS, VEGETATIVE SURFACES WHERE POSSIBLE).
- STABILIZATION: ALL TOPSOIL STOCKPILES MUST BE STABILIZED OR COVERED AT THE END OF EACH WORKING DAY. APPROVED COVER MATERIALS SUCH AS MATS, GEOTEXTILES, OR VEGETATIVE COVER TO PREVENT EROSION AND DUST.
- SEDIMENT BARRIERS: INSTALL SEDIMENT BARRIERS SUCH AS SILT FENCES, TREE ROLLS, OR SEDIMENT TRAPS AROUND THE PERIMETER OF THE STOCKPILE AREAS TO CAPTURE ANY DISPLACED SOIL.
- STORMWATER DRAINAGE: IMPLEMENT MEASURES TO DIVERGE STORMWATER AWAY FROM THE STOCKPILE AREAS. THIS MAY INVOLVE THE USE OF DRAINAGE CHANNELS, DETENTION PONDS, OR OTHER DIVERSION STRUCTURES.
- REGULARLY INSPECT AND MAINTAIN STABILIZATION AND SEDIMENT CONTROL MEASURES, PARTICULARLY BEFORE AND AFTER RAIN EVENTS, TO ENSURE THEY ARE FUNCTIONING PROPERLY. REPAIR OR REPLACE DAMAGED OR INEFFECTIVE CONTROL MEASURES PROMPTLY.
- MINIMIZE DURATION: REDUCE THE DURATION THAT SOIL IS STOCKPILED BY PLANNING FOR PROMPT DISTRIBUTION TO FINAL LOCATIONS. IF LONG-TERM STORAGE IS NECESSARY, CONSIDER MORE PERMANENT STABILIZATION METHODS.
- RECORD KEEPING: MAINTAIN RECORDS OF EROSION AND SEDIMENT CONTROL MEASURES IMPLEMENTED, INSPECTIONS CONDUCTED, AND ANY MAINTENANCE ACTIVITIES PERFORMED IN RELATION TO THE TOPSOIL STOCKPILE AREAS.

- EROSION CONTROL NOTES:**
- THE CONTRACTOR SHALL PROVIDE AND MAINTAIN EROSION CONTROL DURING CONSTRUCTION BY THE PLACEMENT OF SILT FENCES OR MATS WHERE NECESSARY TO PREVENT SOMMEREAL SEDIMENTATION OF ANY DITCHES, PIPES, DRAINAGE STRUCTURES, OR ADJACENT PROPERTIES. THE CONTRACTOR SHALL PROVIDE ANY ADDITIONAL EROSION CONTROL AS NEEDED OR AS DIRECTED BY THE ENGINEER.
  - ONCE CONSTRUCTION BEGINS, WEEKLY INSPECTIONS (EVERY 72 HOURS) SHALL BE PERFORMED BY A CERTIFIED EROSION CONTROL INSPECTOR.
  - ALL NEW CUT OF FILL AREAS LACKING ADEQUATE VEGETATION SHALL BE FERTILIZED, MULCHED, SEEDS, AND/OR SOILED AS REQUIRED TO EFFECTIVELY CONTROL SOIL EROSION.
  - TOTAL DISTURBED AREA IS APPROXIMATELY 15.78 ACRES.
  - DURING EROSION PHASES OF STEEP SLOPES, MATS OR SILT FENCE BANDING SHALL BE REQUIRED TO ELIMINATE SEDIMENT TRANSPORT OVER ADJACENT LANDSCAPES, PROPERTY AND PUBLIC STREETS.
  - PROPOSED TEMPORARY SEDIMENT BASIN SHALL BE LOCATED IN THE LOCATION AS SHOWN ON PLANS.
  - THE SEDIMENT RETAINING ELEVATION SHALL BE CLEARLY MARKED WITH HIGH VISIBILITY PAINT ON THE SILT GAUGE LOCATED IN THE SEDIMENT POND.
  - ONCE AREA IS STABILIZED, CONTRACTOR SHALL REGRADE AREA AND CONSTRUCT PERMANENT DETENTION POND OUTFALL STRUCTURE. SEE SHEET 7 - DETENTION POND CHANNEL & DETAILS.
  - AT ALL TIMES DURING CONSTRUCTION IT SHALL BE THE RESPONSIBILITY OF THE CONTRACTOR TO KEEP THE PUBLIC ROADSWAY FREE AND CLEAR OF ALL MUD, ROCKS AND DEBRIS FROM THE SITE.
  - SILT FENCE AS SHOWN MAY NOT BE PARALLEL TO CONTOURS AND LOCATIONS SHALL BE FIELD MODIFIED TO PROPERLY INSTALL SILT FENCE AND ALL BARS.
  - CONTRACTOR DESIGNATED MATERIAL STORAGE AREAS SHALL COMPLY WITH THE SHPPP AND THE LARGE CONSTRUCTION STORM WATER GENERAL PERMIT.

- LEGEND**
- PROPERTY LINES
  - ADJOINING PROP. LINES
  - DRAINAGE BASIN
  - LIMITS OF DISTURBANCE
  - EASEMENT
  - SILT FENCE
  - BATTERY PROTECTION
  - CHECK DAM
  - ROCK FILTER DAM
  - BRUSH FILTER BARRIER
  - MATS
  - CONCRETE WALL
  - CONCRETE TRAP
  - SEDIMENT BASIN
  - OUTLET PROTECTION
  - CONSTRUCTION EXIT
  - PERMANENT SEEDING
  - EROSION CONTROL MAT
  - DETENTION POND
  - SEWER MANHOLE
  - DRAINAGE MANHOLE
  - HYDRAULIC FLOW ARROWS (DIRECTION OF WATER FLOW)
  - 2" DRAINAGE CHANNEL
  - BUFFER ZONE
  - CONSTRUCTION SUPPORT & MATERIAL MANAGEMENT AREA
  - DRAINAGE BASIN FOR CONTRIBUTING DRAINAGE AREA

- RECEIVING WATER'S NOTE:**
- STORMWATER FROM DRAINAGE BASINS DISCHARGE TO BERRY BRANCH ACCORDING TO MISSISSIPPI DEPARTMENT OF ENVIRONMENTAL QUALITY (DEQ) DIVISION OF WATER RESOURCES. THIS SEDIMENT IS NOT CURRENTLY LISTED AS HAZARDOUS. HOWEVER, DOWNSTREAM OF OUR OUR LOCATION, BERRY BRANCH IS DESIGNATED AS THE APPLICABLE TRIM AND POLLUTANT LOAD CONTRIBUTIONS POTENTIALLY AFFECTING DOWNSTREAM SEDIMENTS.
  - DUE TO THE NATURE OF CONSTRUCTION, INSTALLATION AND MAINTENANCE OF NECESSARY BEST MANAGEMENT PRACTICES (BMPs), AND FINAL OPERATIONS OF THE DEVELOPMENT, ADDITIONAL POLLUTANT IMPACT IS NOT SPECIFICALLY APPLICABLE, BUT EVERY CARE SHALL BE TAKEN TO AVOID ANY FUTURE DISCHARGES RESULTING IN INCREASED BIOLOGICAL LOADING TO THE RECEIVING STREAM.

- CONSTRUCTION SUPPORT & MATERIAL MANAGEMENT AREA:**
- AREA DESIGNATED FOR EQUIPMENT MAINTENANCE AND MAJOR REPAIR, SANITARY FACILITIES, WASTE COLLECTION/HAND-OFF, LAYDOWN/STORAGE, AND MATERIAL/CHEMICAL STORAGE.
- ALL ACTIVITIES SHALL COMPLY WITH THE SHPPP AND GENERAL PERMIT REQUIREMENTS FOR POLLUTION PREVENTION.
  - SECONDARY CONTAINMENT REQUIRED FOR FLUIDS AND LIQUID CHEMICALS.
  - SANITARY FACILITIES AND WASTE CONTAINERS SHALL BE PROPERLY MAINTAINED AND SERVICED BY LICENSED CONTRACTORS.
  - STORMWATER BARRIERS (SILT FENCES, MATS, SILT PROTECTION, ETC.) SHALL BE INSTALLED TO PREVENT DISCHARGE OF POLLUTANTS FROM THIS AREA.

- PHASE 1 CONSTRUCTION SEQUENCE:**
- INSTALL CONSTRUCTION EXIT PER DETAIL. CONSTRUCTION EXIT LOCATION MAY BE MODIFIED ACCORDING TO ACCESS/EGRESS OF THE CONTRACTOR AS APPROVED BY ENGINEER.
  - INSTALL BARRIERS NEAR CONSTRUCTION ENTRANCE OR LOCATION THAT IS EASILY ACCESSIBLE BY A VEHICLE.
  - INSTALL SILT FENCE, MATS, AND BATTERY PROTECTION ON EXISTING MATS IN ALL LOCATIONS SHOWN THIS SHEET BEFORE CONSTRUCTION BEGINS FOR DETAIL. REMOVE SEDIMENT FROM SILT FENCE ONCE SEDIMENT HAS REACHED 1/3 OF THE HEIGHT OF THE SILT FENCE AND AS NEEDED TO CLEAR AND CURB THE SITE.
  - INSTALL TEMPORARY SEDIMENT BASIN AS SHOWN THIS SHEET AND PER DETAILS SHOWN ON SHEET 10.
  - CONSTRUCT DRAINAGE (DRAINAGE CHANNELS) AS NEEDED TO DIRECT CONVEYANCE OF STORMWATER TO SEDIMENT BASIN AND/OR TO DIVERGE OFF-SITE STORMWATER AROUND THE CONSTRUCTION AREA.
  - CLEAR AND CURB THE SITE. USE VEGETATIVE MATERIALS TO CONSTRUCT BRUSH FABRIC BARRIER (BFB) AS SHOWN. DISPOSE OF EXCESS SOILS PRODUCED DURING THE CLEARING AND GRUBBING ACTIVITY.
  - ALL DISTURBED AREAS SHALL BE PERMANENTLY STABILIZED WITH SEEDING/SOIL AND SEDIMENT BASIN SHALL BE PROPERLY MAINTAINED. DESIGNER EROSION CONTROL MEASURES MUST REMAIN INTACT AND FUNCTIONING UNTIL STABILIZATION IS COMPLETE.
  - STORMWATER INSPECTION AND REPORTING WILL BE REQUIRED OF ALL SEDIMENT AND EROSION CONTROL MEASURES IN ACCORDANCE WITH BEST PRACTICES.
  - REMOVE ANY TEMPORARY CONTROL MEASURES NOT NEEDED.
  - DUST SHALL BE CONTROLLED DURING CONSTRUCTION BY ADEQUATE USE OF WATER.
  - TRANSITION TO PHASE 2.

**FEMA NOTE:**  
 ACCORDING TO THE FEDERAL EMERGENCY MANAGEMENT AGENCY'S FLOOD INSURANCE RATE MAP (FIRM), THIS PROPERTY IS LOCATED IN ZONE X, WHICH IS NOT A SPECIAL FLOOD HAZARD AREA. PER FIRM MAP NO. 28071E 0148C, COMMUNITY PANEL NUMBER 280683 0252 C, EFFECTIVE DATE: NOVEMBER 26, 2010.

**BENCHMARK (BM):**  
 1. BENCH WITH "2808 BENT" CAN BE FOUND IN A 1/4 SECTION WITH AN ELEVATION OF 442.40'. THIS BENCHMARK IS LOCATED SOUTH 754.33 FEET AND EAST 1,382.32 FEET FROM THE POB.

REVISION	DESCRIPTION OF CHANGE	APPROVAL DATE

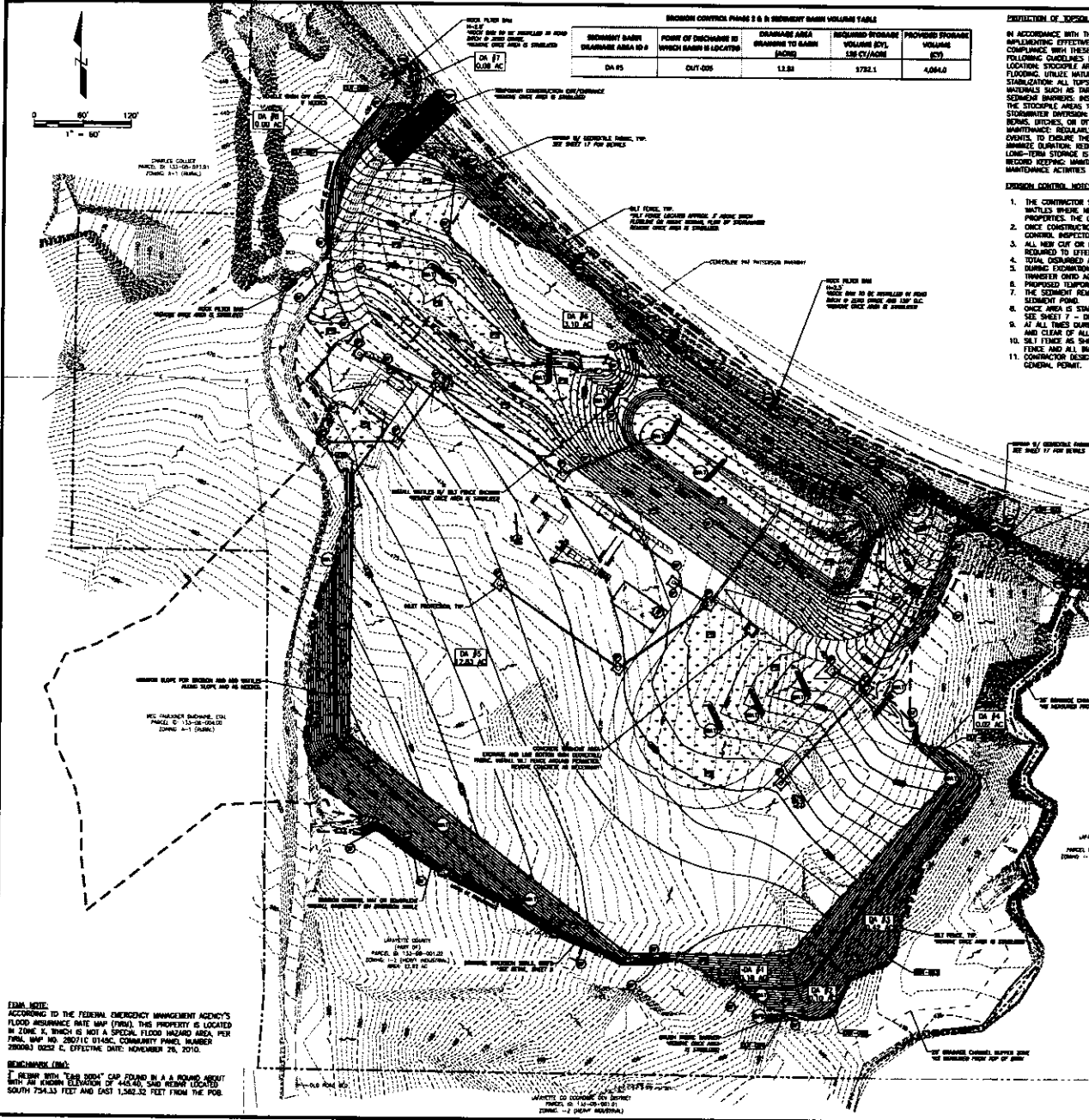
DIVISION OF ENGINEERING  
**EROSION CONTROL PLAN - PHASE 1**  
 LAFAYETTE COUNTY, MS

SURVEY: WILLIAMS DING DATE: 11/20/2009 PROJECT NO: 1000-140  
 DESIGNER: J. CRAWFORD, P.E. DATE: 12/15/2009  
 DRAWN BY: J. CRAWFORD, P.E. DATE: 12/15/2009 SCALE: 1" = 80'

MAGNOLIA MATERIALS - HMA BATCH PLANT

OWNER: MAGNOLIA MATERIALS, LLC  
 ENGINEER: CRAWFORD & ASSOCIATES, LLC





**EROSION CONTROL PHASE 3 & 4 SEDIMENT BASIN VOLUMES TABLE**

SEDIMENT BASIN DISCHARGE AREA (SQ FT)	POINT OF DISCHARGE TO WHICH BASIN IS LOCATED	DISCHARGE AREA DRAINING TO BASIN (ACRES)	REQUIRED STORAGE VOLUME (CU YD)	PROPOSED STORAGE VOLUME (CU YD)
DA-05	OUT-005	12.81	1782.1	4,044.0

**EXPLANATION OF TOPSOIL STOCKPILE AREAS**

IN ACCORDANCE WITH THE LARGE CONSTRUCTION STORM WATER PERMIT REQUIREMENTS, THE CONTRACTOR IS RESPONSIBLE FOR IMPLEMENTING EFFECTIVE EROSION AND SEDIMENT CONTROL MEASURES TO PROTECT TOPSOIL STOCKPILE AREAS ON THE PROJECT SITE. COMPLIANCE WITH THESE MEASURES IS CRITICAL TO MINIMIZE ENVIRONMENTAL IMPACT AND ADHERE TO REGULATORY STANDARDS. THE FOLLOWING GUIDELINES MUST BE OBSERVED:

- LOCATION: STOCKPILE AREAS SHOULD BE SITUATED AWAY FROM STORM DRAIN BALETS, WATERCOURSES, AND NOT IN AREAS PRONE TO FLOODING. BUFFER ZONES SHOULD BE MAINTAINED.
- STABILIZATION: ALL TOPSOIL STOCKPILES MUST BE STABILIZED ON COVERED AT THE END OF EACH WORKDAY. USE APPROPRIATE COVER MATERIALS SUCH AS STRAW, GEOTEXTILES, OR WEAVING COVER TO PREVENT EROSION AND DUST.
- SEDIMENT BARRIERS: INSTALL SEDIMENT BARRIERS SUCH AS SILT FENCES, TREE BOLLAS, OR SEDIMENT TRAPS AROUND THE PERIMETER OF THE STOCKPILE AREAS TO CAPTURE ANY DISPLACED SOIL.
- STORMWATER DRAINAGE: MEASURES TO DETERMINE DRAINAGE AWAY FROM THE STOCKPILE AREAS. THIS MAY INVOLVE THE USE OF BARRIERS, BRITCHES, OR OTHER DIVERSION STRUCTURES.
- MAINTENANCE: REGULARLY INSPECT AND MAINTAIN STABILIZATION AND SEDIMENT CONTROL MEASURES, PARTICULARLY BEFORE AND AFTER RAIN EVENTS, TO ENSURE THEY ARE FUNCTIONING PROPERLY. REPAIR OR REPLACE DAMAGED OR INEFFECTIVE CONTROL MEASURES PROMPTLY.
- DURATION: REDUCE THE DURATION THAT SOIL IS STOCKPILED BY PLANNING FOR PROMPT DISTRIBUTION TO FINAL LOCATIONS. IF LONG-TERM STORAGE IS NECESSARY, CONSIDER MORE PERMANENT STABILIZATION METHODS.
- RECORD KEEPING: MAINTAIN RECORDS OF EROSION AND SEDIMENT CONTROL MEASURES IMPLEMENTED, INSPECTIONS CONDUCTED, AND ANY MAINTENANCE ACTIVITIES PERFORMED IN RELATION TO THE TOPSOIL STOCKPILE AREAS.

**LEGEND**

- PROPERTY LINES
- ADJOINING PROP. LINES
- DISCHARGE BASIN
- LIMITS OF DISTURBANCE
- EASEMENT
- SILT FENCE
- INLET PROTECTION
- CHECK DAM
- ROCK FILTER DAM
- BRUSH FILTER BARRIER
- BATTLES
- CONCRETE WASHOUT
- SEDIMENT TRAP
- SEDIMENT BASIN
- OUTLET PROTECTION
- CONSTRUCTION EXIT
- PERMANENT SEEDING
- EROSION CONTROL MAT
- SEWER MANHOLE
- DRAINAGE MANHOLE
- HYDRAULIC FLOW ARROWS (DIRECTION OF WATER FLOW)
- 2" DRAINAGE CHANNEL
- BUFFER ZONE
- CONSTRUCTION SUPPORT & MATERIAL MANAGEMENT AREA
- DRAINAGE BASIN BY CONTRIBUTING DRAINAGE AREA

- EROSION CONTROL MEASURES:**
- THE CONTRACTOR SHALL PROVIDE AND MAINTAIN EROSION CONTROL DURING CONSTRUCTION BY THE PLACEMENT OF SILT FENCES OR BATTLES WHERE NECESSARY TO PREVENT DOWNSTREAM SITUATION OF ANY BRITCHES, PAVED DRAINAGE STRUCTURES, OR ADJACENT PROPERTIES. THE CONTRACTOR SHALL PROVIDE ANY ADDITIONAL EROSION CONTROL AS REQUESTED BY THE ENGINEER.
  - ONCE CONSTRUCTION BEGINS, TRUCK-BEELY INSPECTIONS (EVERY 72 HOURS) SHALL BE PERFORMED BY A CERTIFIED EROSION CONTROL INSPECTOR.
  - ALL NEW CUT OR FILL AREAS LACKING ADEQUATE VEGETATION SHALL BE FERTILIZED, MULCHED, SEEDED, AND/OR COVERED AS REQUIRED TO EFFECTIVELY CONTROL SOIL EROSION.
  - TOTAL DISBURSED AREA IS APPROXIMATELY 13.78 ACRES.
  - DURING EXTENSION PHASES OF STEEP SLOPES, BATTLES WITH SILT FENCE BACKING SHALL BE REQUIRED TO ELIMINATE SITUATION TRANSFER DATED ADJACENT UNIMPROVED PROPERTY AND PUBLIC STREETS.
  - PROPOSED TEMPORARY SEDIMENT BASIN SHALL BE LOCATED IN THE LOCATION AS SHOWN ON PLANS.
  - THE SEDIMENT REMOVAL EFFICIENCY SHALL BE CLEARLY MARKED WITH HIGH VISIBILITY PAINT ON THE SILT CAUSE LOCATED IN THE SEDIMENT POND.
  - ONCE AREA IS STABILIZED, CONTRACTOR SHALL REMOVE AREA AND CONSTRUCT PERMANENT DETENTION POND OUTLET STRUCTURE.
  - AT ALL TIMES DURING CONSTRUCTION THE RESPONSIBILITY OF THE CONTRACTOR TO KEEP THE PUBLIC ROADWAYS FREE AND CLEAR OF ALL WOOD, ROCKS AND DEBRIS FROM THE SITE.
  - SILT FENCE AS SHOWN MAY NOT BE PARALLEL TO CONTOURS AND LOCATIONS SHALL BE FIELD MODIFIED TO PROPERLY INSTALL SILT FENCE AND ALL WAYS.
  - CONTRACTOR DESIGNATED MATERIAL STORAGE AREAS SHALL COMPLY WITH THE SWPPP AND THE LARGE CONSTRUCTION STORM WATER GENERAL PERMIT.

**RECEIVING MATERIALS NOTE:**

- STORMWATER FROM DRAINAGE BASINS DISCHARGE TO BERRY BRANCH ACCORDING TO MISSISSIPPI DEPARTMENT OF ENVIRONMENTAL QUALITY (MDEQ) DIVISION OF WATER RESOURCES. THIS SEDIMENT IS NOT CURRENTLY LISTED AS IMPAIRED. HOWEVER, DOWNSTREAM OF OUR OUR LOCATION, BERRY BRANCH IS LISTED ON THE 303(D) LIST AS HAVING AN IMPAIRMENT DUE TO SEDIMENT. THEREFORE, THIS SWPPP CONSIDERS THE APPLICABLE TREATS AND POLLUTANT LOAD CONTRIBUTIONS POTENTIALLY AFFECTING DOWNSTREAM RESOURCES.
- DUE TO THE NATURE OF CONSTRUCTION, INSTALLATION AND MAINTENANCE OF NECESSARY BEST MANAGEMENT PRACTICES (BMPs), AND FINAL OPERATIONS OF THE DEVELOPER, ADDITIONAL BIOLOGICAL IMPAIRMENT IS NOT SPECIFICALLY APPLICABLE, BUT EVERY CARE SHALL BE TAKEN TO AVOID ANY FUTURE IMPAIRED RESULTING IN INCREASED BIOLOGICAL LOADING TO THE RECEIVING STREAM.

**CONSTRUCTION SUPPORT & MATERIAL MANAGEMENT AREA:**

- AREA DESIGNATED FOR EQUIPMENT MAINTENANCE AND MINOR REPAIR, SANITARY FACILITIES, WASTE COLLECTION/PICK-UP, LAYDOWN/STORAGE, AND MATERIAL/CHEMICAL STORAGE.
- ALL ACTIVITIES SHALL COMPLY WITH THE SWPPP AND GENERAL PERMIT REQUIREMENTS FOR POLLUTION PREVENTION.
  - SECONDARY CONTAINMENT REQUIRED FOR FUELS AND LIQUID CHEMICALS.
  - SANITARY FACILITIES AND WASTE CONTAINERS SHALL BE PROPERLY MAINTAINED AND SERVICED BY LICENSED CONTRACTORS.
  - STORMWATER BMPs (SILT FENCE, BATTLES, SPILL PROTECTION, ETC) SHALL BE INSTALLED TO PREVENT DISCHARGE OF POLLUTANTS FROM THIS AREA.

**PHASE 3 CONSTRUCTION SCHEDULE:**

- MAINTAIN ALL EROSION CONTROL MEASURES AS NECESSARY.
- INSTALL FINAL SURFACE COURSE OF ASPHALT/CONCRETE FOR SITE IMPROVEMENTS AND MONITOR CONTROLS AS NECESSARY UNTIL THE SITE IS STABILIZED.
- ALL DISTURBED AREAS SHALL BE PERMANENTLY STABILIZED WITH SEEDING/SOD OR VEGETATION AS SHOWN ON THE LANDSCAPE PLAN. ALL DESIGNED EROSION CONTROL MEASURES MUST REMAIN INTACT AND FUNCTIONING UNTIL STABILIZATION IS MAINTAINED.
- THE SEDIMENT BASIN AND OUTLET STRUCTURES SHALL BE CONSTRUCTED TO THE PERMANENT DETENTION POND ONCE SITE HAS BEEN STABILIZED.
- STORMWATER INSPECTION AND REPORTING WILL BE REQUIRED OF ALL SEDIMENT AND EROSION CONTROL MEASURES IN ACCORDANCE WITH ADEQ REGULATIONS.
- REMOVE ANY TEMPORARY CONTROL MEASURES NOT NEEDED.
- UPON FINAL STABILIZATION OF ALL DISTURBED AREAS, COMPLETE AND SUBMIT THE REQUEST FOR TERMINATION/DEFINITION OF COVERAGE TO ADEQ.

**FEMA NOTE:**  
 ACCORDING TO THE FEDERAL EMERGENCY MANAGEMENT AGENCY'S FLOOD INSURANCE RATE MAP (FIRM), THIS PROPERTY IS LOCATED IN ZONE X, WHICH IS NOT A SPECIAL FLOOD HAZARD AREA, PER FIRM MAP NO. 28071C 0145C, COMMUNITY PANEL NUMBER 280003 0282 C, EFFECTIVE DATE: NOVEMBER 26, 2010.

**BENCHMARK (BM):**  
 7. BENCHMARK "BM1" CAP FOUND IN A BERMINGHAM SEWER WITH AN ELEVATION OF 445.45, 540 FEET FROM THE SOUTH 754.33 FEET AND EAST 1,262.32 FEET FROM THE POB.

ITEM NO.	REVISION DESCRIPTION OF CHANGE	APPROVAL DATE

**DIVISION OF ENGINEERING**

**EROSION CONTROL PLAN - PHASE 3**

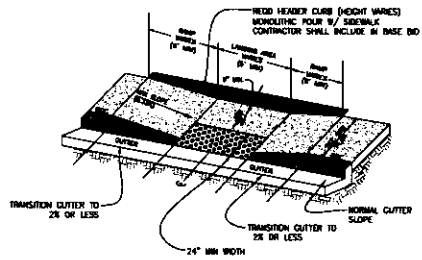
**LAFAYETTE COUNTY, MS**

OWNER: MAGNOLIA MATERIALS, LLC  
 ENGINEER: CHAMBERLAIN & ASSOCIATES, LLC

SURVEY: WILLIAMS CIVIL DATE: 11/20/2023 PROJECT NO: 1000-145  
 DESIGN BY: J. CHAMBERLAIN, P.E. DATE: 12/14/2023 BOOK:        
 DRAWN BY: J. CHAMBERLAIN, P.E. DATE: 12/14/2023 SCALE: 1" = 60'

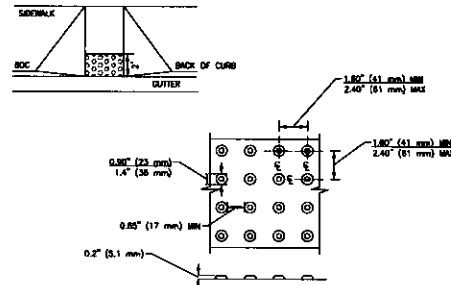




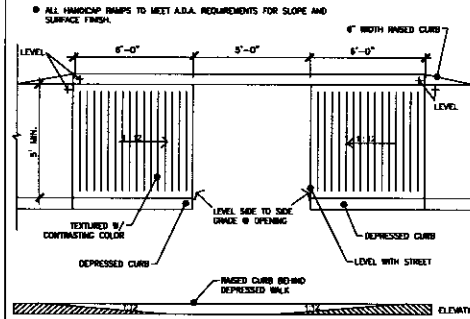


- NOTES:
- RAMPS WILL BE CONSTRUCTED FROM CONCRETE. SPECIFICATIONS FOR RAMP WILL BE THE SAME AS FOR CONCRETE SIDEWALK.
  - LINE OF CURB AND CUTTER WILL INCLUDE THE TRANSITION CURB IN FRONT OF RAMPS. 50% YDS. OF CONCRETE SIDEWALK WILL INCLUDE RAMPS. NO ADDITIONAL PAYMENT WILL BE MADE FOR RAMPS AND REMOVING EXISTING SIDEWALK OR CURB WHERE NECESSARY FOR RAMP CONSTRUCTION.

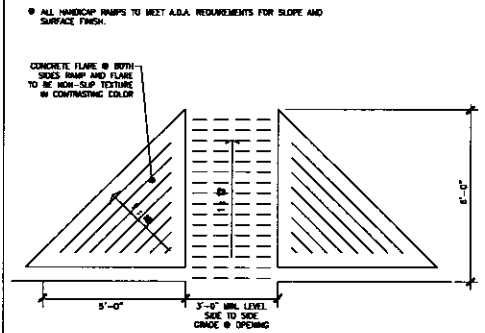
**HANDICAP RAMP TYPE B**  
SCALE: N.T.S.



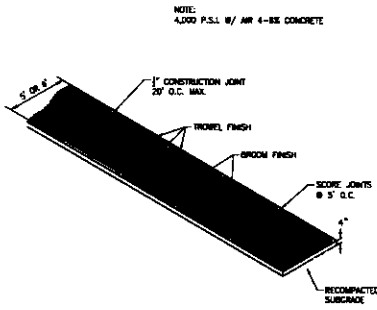
**ADA DETECTABLE WARNING SURFACE (BRICK RED)**  
SCALE: N.T.S.



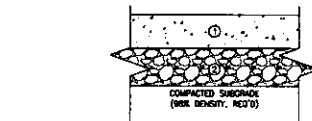
**HANDICAP CURB CUT DETAIL**  
SCALE: N.T.S.



**HANDICAP RAMP DETAIL**  
SCALE: N.T.S.



**SIDEWALK DETAIL**  
SCALE: N.T.S.

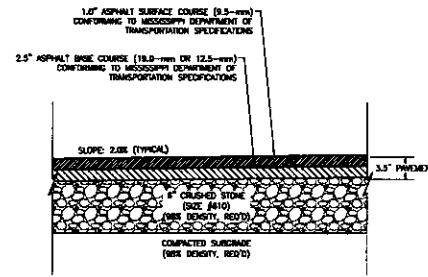


- CONCRETE PAVEMENT:
- HEAVY DUTY PAVEMENT (SCALE AREA AND APPROACH):**
- 8" PORTLAND CEMENT CONCRETE (3,000 PSI COMPRESSIVE STRENGTH) MINIMUM FLEXURAL STRENGTH OF 800 PSI AT 28 DAYS. CONCRETE SHALL BE STEEL REINFORCED W/ JOINTS. CONCRETE SHALL BE HIVE AIR ENTRENCHMENT BETWEEN 9-72.
  - 2" AGGREGATE BASE COURSE SHALL BE IN ACCORDANCE WITH HMA SPECIFICATIONS. (ONLY REQUIRED IF SUBGRADE IS NATIVE SOIL OR UNDESIRABLE/UNSTABILIZED. CHEMICALLY STABILIZED SUBGRADES DO NOT REQUIRE AGGREGATE BASE).

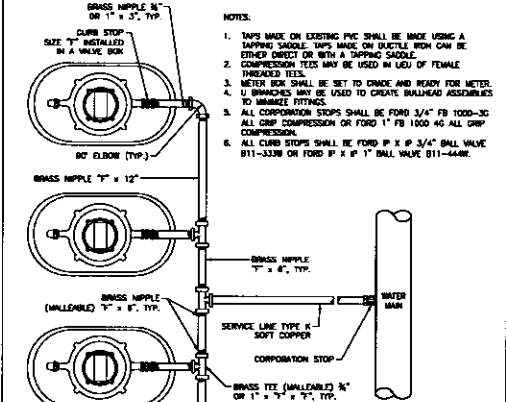
**HEAVY DUTY PAVING SECTION**  
SCALE: N.T.S.

PAVEMENT STRUCTURE NOTE

- SITE SPECIFIC GEOTECHNICAL REPORT AND PAVEMENT DESIGN SHALL COVER IF PROVIDED.

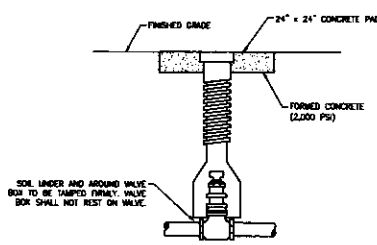


**ASPHALT PAVING SECTION**  
SCALE: N.T.S.

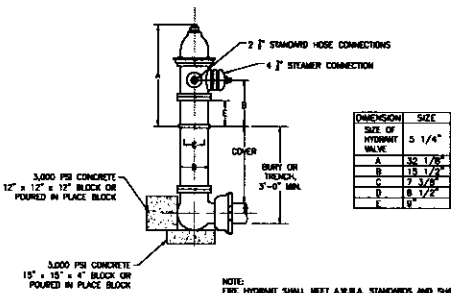


SIZE 1/2" (L.D.) (SERVICE TAP SIZE FROM MAIN)	NUMBER OF METERED SERVICES ALLOWED	
	3/4"	1"
2"	9-18	5-8
1 1/2"	5-8	4
1"	4	2
3/4"	2	N/A

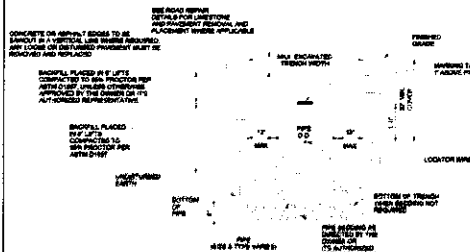
**WATER SERVICE & METER DETAIL (GANG METER ASSEMBLY)**  
SCALE: N.T.S.



**VALVE AND BOX ASSEMBLY**  
SCALE: N.T.S.



**FIRE HYDRANT ASSEMBLY**  
SCALE: N.T.S.



**WATER PIPE PLACEMENT**  
SCALE: N.T.S.

REVISION	APPROVAL
ITEM NO.	DATE



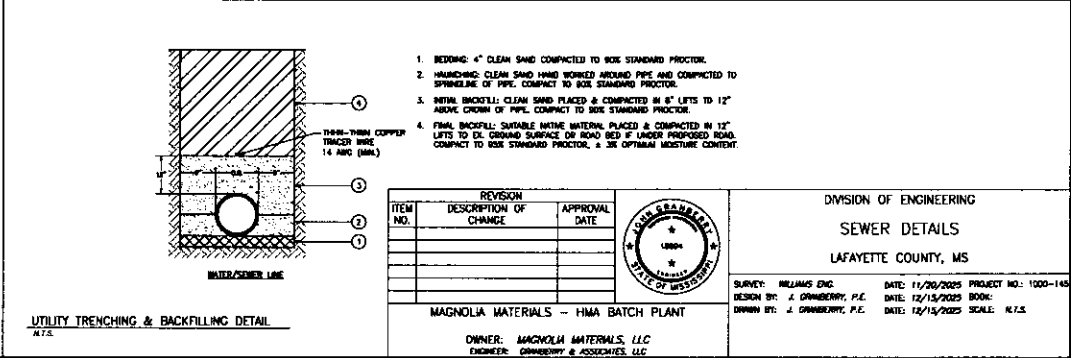
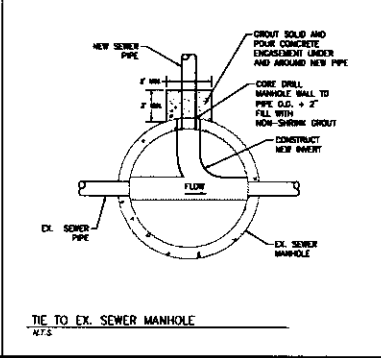
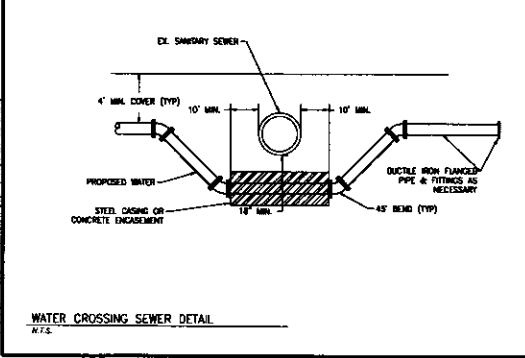
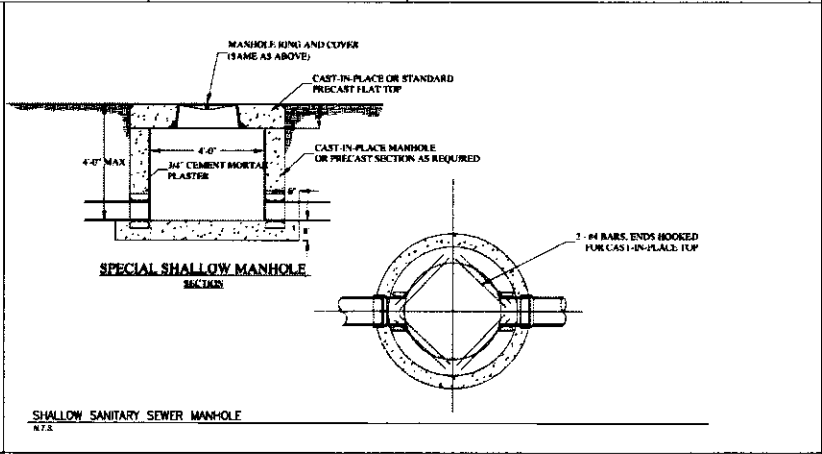
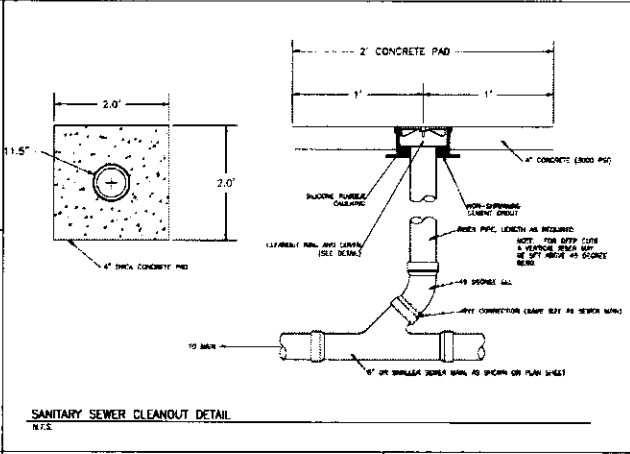
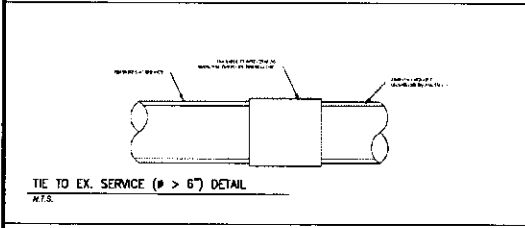
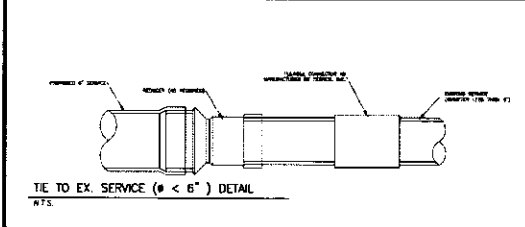
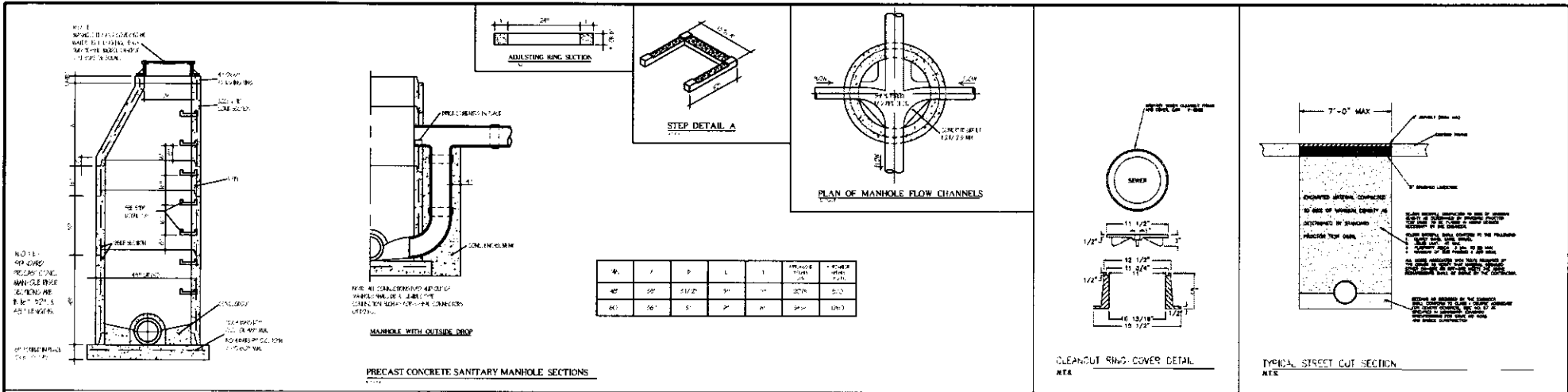
DIVISION OF ENGINEERING  
CONSTRUCTION DETAILS  
LAFAYETTE COUNTY, MS

SURVEY: WILLIAMS ENG. DATE: 11/20/2023 PROJECT NO.: 1000-145  
DESIGN BY: J. GAMBERRY, P.E. DATE: 12/15/2023 BOOK:  
DRAWN BY: J. GAMBERRY, P.E. DATE: 12/15/2023 SCALE: N.T.S.

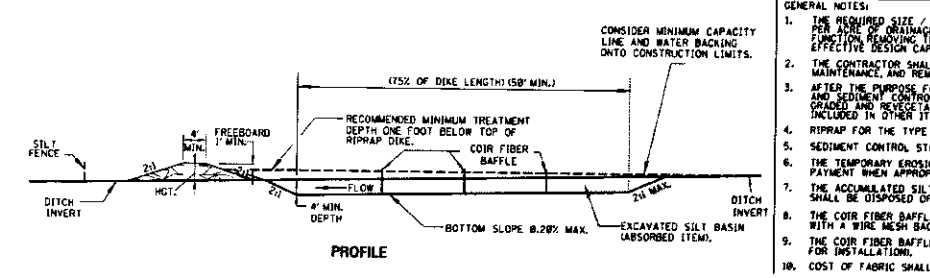
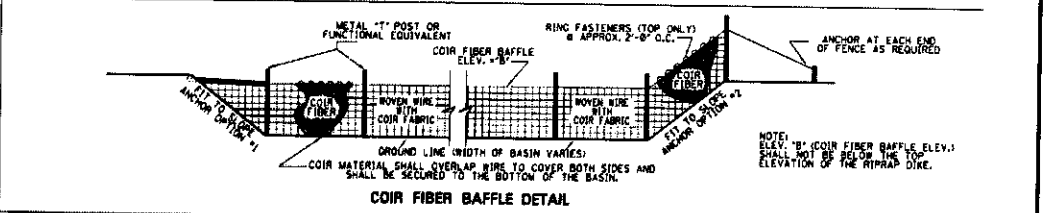
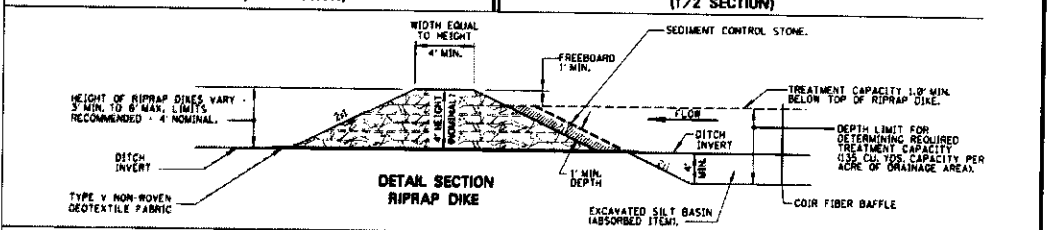
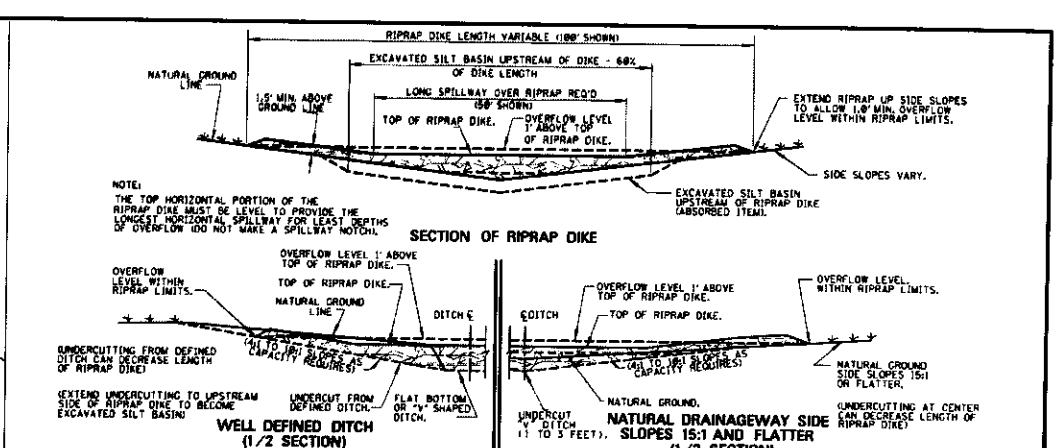
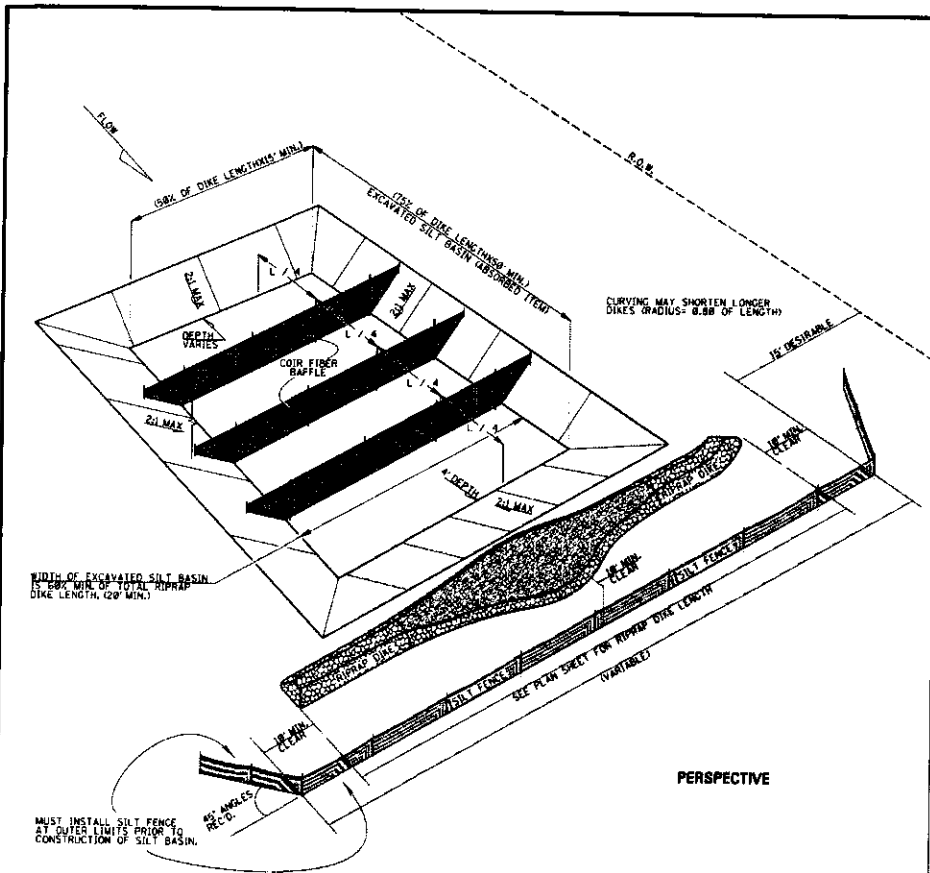
MAGNOLIA MATERIALS - HMA BATCH PLANT

OWNER: MAGNOLIA MATERIALS, LLC  
ENGINEER: GAMBERRY & ASSOCIATES, LLC







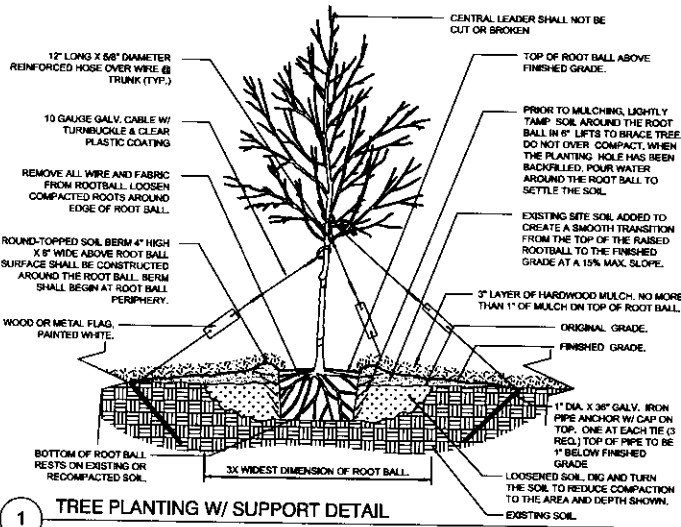


- GENERAL NOTES:**
1. THE REQUIRED SIZE / CAPACITY OF THE RIPRAP DIKE SILT BASIN IS AT LEAST 125 CUBIC YARDS OF VOLUME / CAPACITY PER ACRE OF DRAINAGE AREA RECEIVED. THE RIPRAP DIKE SILT BASIN MUST BE MAINTAINED AT ALL TIMES TO ASSURE THE INTENDED FUNCTION, REMOVING THE ACCUMULATED SILT ROUTINELY, AND / OR WHEN APPROACHING A 50% MAXIMUM DECREASE FROM THE EFFECTIVE DESIGN CAPACITY, AND RESTORING THE BASIN TO ITS ORIGINAL EFFECTIVE DESIGN CAPACITY.
  2. THE CONTRACTOR SHALL BE REQUIRED TO FURNISH ALL MATERIALS, PERFORM ALL WORK FOR THE PROPER INSTALLATION, MAINTENANCE, AND REMOVAL OF TEMPORARY EROSION CONTROL MEASURES NECESSARY TO CONTROL SILTATION.
  3. AFTER THE PURPOSE FOR THE SILT BASIN HAS BEEN SERVED, THE POSTS AND SILT FENCE SHALL BE REMOVED, THE RIPRAP GRADED AND REVEGETATED AS DEEMED NECESSARY BY THE ENGINEER. ALL COSTS OF REMOVAL AND REPLACEMENT SHALL BE INCLUDED IN OTHER ITEMS BID.
  4. RIPRAP FOR THE TYPE D SILT BASIN SHALL BE MIN. 100 LB RIPRAP AND SHALL BE PAID FOR - PER TON.
  5. SEDIMENT CONTROL STONE SHALL BE PAID FOR - PER TON.
  6. THE TEMPORARY EROSION CONTROL MEASURES SHOWN ON THIS SHEET WILL ONLY BE MEASURED FOR SEPARATE PAYMENT WHEN APPROPRIATE PAY ITEMS ARE INCLUDED IN THE BID SCHEDULE OF THE PROPOSAL.
  7. THE ACCUMULATED SILT SHALL BE REMOVED WHEN IT REACHES 1/3 TO 1/2 THE HEIGHT OF THE CONTROL FEATURE. SILT SHALL BE DISPOSED OF PROPERLY AND SHALL NOT BE DISPOSED OF IN THE VICINITY OF THE EROSION CONTROL DEVICES.
  8. THE COIR FIBER BAFFLES SHALL BE CONSTRUCTED OF 100% COCONUT (COIR) FIBER MATERIAL SUPPORTED BETWEEN POSTS WITH A WIRE MESH BACKING AS SHOWN ABOVE. ROWS SHALL BE EVENLY SPACED THROUGH THE BASIN.
  9. THE COIR FIBER BAFFLES SHALL BE PAID FOR - PER LINEAR FEET. (INCLUDES ALL ITEMS SHOWN IN DETAIL NEEDED FOR INSTALLATION).
  10. COST OF FABRIC SHALL BE INCLUDED IN OTHER ITEMS BID.

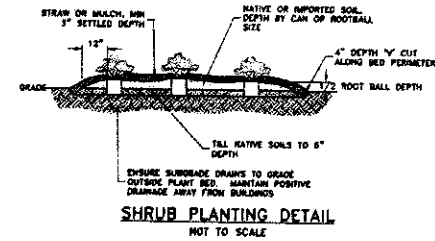
REVISION			APPROVAL DATE		DIVISION OF ENGINEERING EROSION CONTROL DETAILS - SEDIMENT BASIN (MDOOT BAS-D) LAFAYETTE COUNTY, MS
ITEM NO.	DESCRIPTION OF CHANGE				
SURVEY: WILLIAMS ENG. DATE: 11/20/2023 PROJECT NO: 1000-143 DESIGN BY: J. CRANBERRY, P.E. DATE: 12/15/2023 BOOK: DRAWN BY: J. CRANBERRY, P.E. DATE: 12/15/2023 SCALE: N.T.S.					
MAGNOLIA MATERIALS - HMA BATCH PLANT OWNER: MAGNOLIA MATERIALS, LLC ENGINEER: CRANBERRY & ASSOCIATES, LLC					



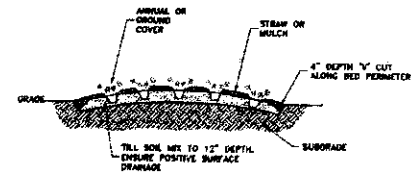




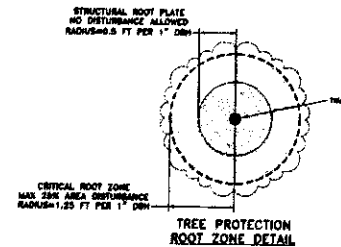
1 TREE PLANTING W/ SUPPORT DETAIL



SHRUB PLANTING DETAIL  
NOT TO SCALE



GROUND COVER PLANTING DETAIL  
NOT TO SCALE



REVISION	APPROVAL
ITEM NO.	DATE

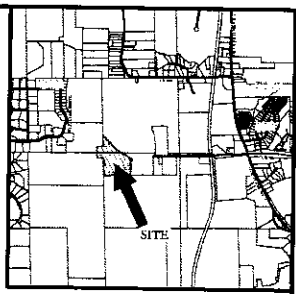
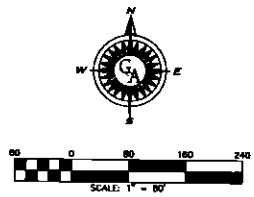
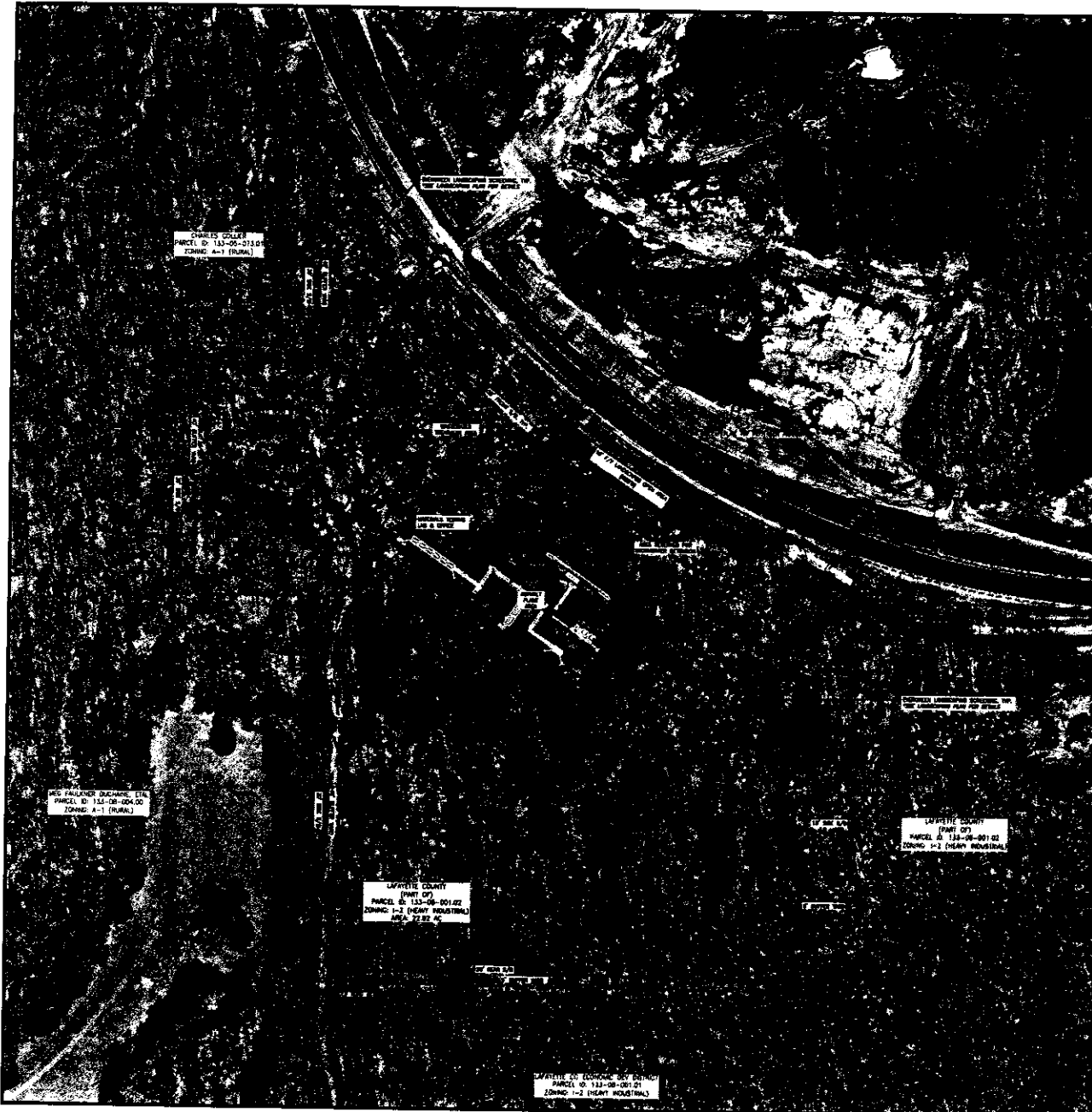


DIVISION OF ENGINEERING  
LANDSCAPE DETAILS  
LAFAYETTE COUNTY, MS

SURVEY: WILLIAMS, INC. DATE: 11/26/2023 PROJECT NO.: 1000-140  
DESIGN BY: J. CRANBERRY, P.E. DATE: 12/15/2023 BOOK:  
DRAWN BY: J. CRANBERRY, P.E. DATE: 12/15/2023 SCALE: N.T.S.

MAGNOLIA MATERIALS - HMA BATCH PLANT

OWNER: MAGNOLIA MATERIALS, LLC  
ENGINEER: CRANBERRY & ASSOCIATES, LLC



**FEMA NOTE:**  
 ACCORDING TO THE FEDERAL EMERGENCY MANAGEMENT AGENCY'S FLOOD INSURANCE RATE MAP (FIRM), THIS PROPERTY IS LOCATED IN ZONE X, WHICH IS NOT A SPECIAL FLOOD HAZARD AREA. FOR FIRM MAP NO. 26071C 0140C, COMMUNITY PANEL NUMBER 260603 0252 C, EFFECTIVE DATE: NOVEMBER 26, 2010.

**REMARKS:**  
 1. WEIR WITH "LARGE SOFT" CHIP FOUND IN A LA BOUND AROUND WITH AN EXPOSED LITHATION OF SAND. SAND REMAIN LOCATED SOUTH 754.13 FEET AND EAST 1,362.32 FEET FROM THE POB.

**LEGEND**

	PROPERTY BOUNDARY LINE
	ADJACENT PROPERTY LINE
	SETBACK
	CL: ROADWAY CENTERLINE
	EX. EDGE OF PAVEMENT
	OVERGREEN LANDSCAPE SCREEN
	LIMITS OF DISTURBANCE
	LANDSCAPING AND/OR BUFFER YARD AREA

**VEGETATION AND TREE PLAN**  
 FOR  
**MAGNOLIA MATERIALS - ASPHALT PLANT SITE PLAN**

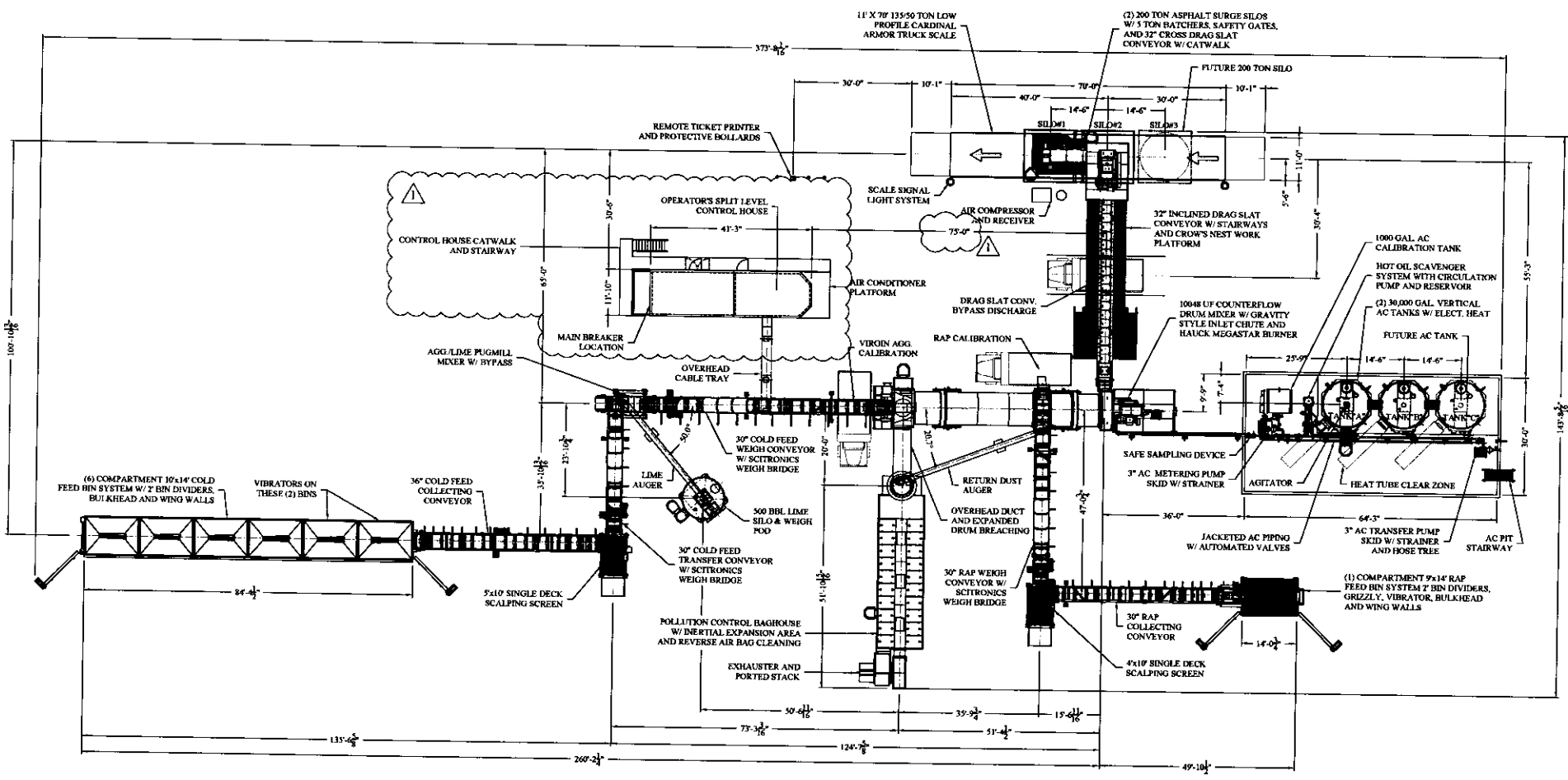
LAFAYETTE COUNTY, MISSISSIPPI  
 DECEMBER 2025  
 SCALE 1" = 80'  
 PROPERTY AREA: 22.85 ACRES  
 ZONING: I-2 (HEAVY INDUSTRIAL)

Prepared by:  
**GRANBERRY & ASSOCIATES**  
 CIVIL ENGINEERING FIRM

CHRYMANTHUS, TN 38158  
 P.O. BOX 26072

**DEVELOPER:**  
**MAGNOLIA MATERIALS, LLC**  
 31 SPT. 202  
 OXFORD, MS 38855

REVISIONS			
LR	DESCRIPTION	DATE	APPROVED
Δ	FOR CONSTRUCTION	09/29/25	DAL



**FOR CONSTRUCTION**  
 ISSUE DATE 09/29/25

**EQUIPMENT LAYOUT PLAN**  
**MR CONSTRUCTION**  
**ALMIX 10048 UF PLANT**

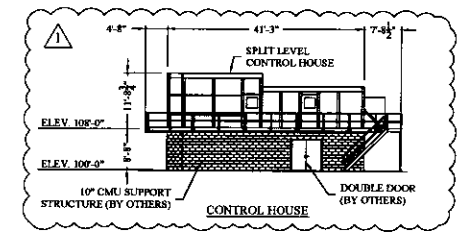
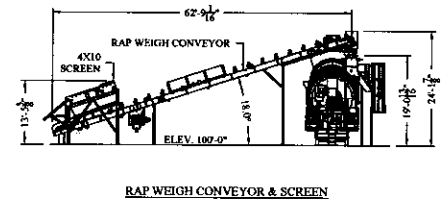
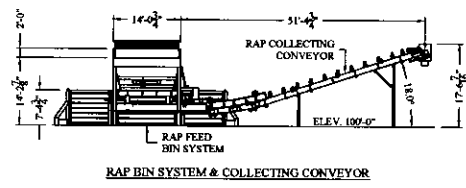
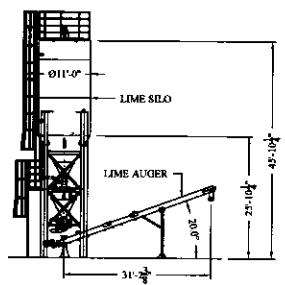
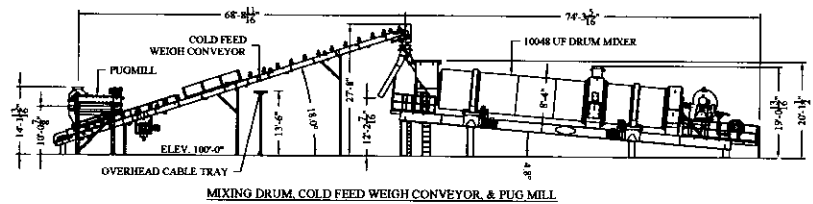
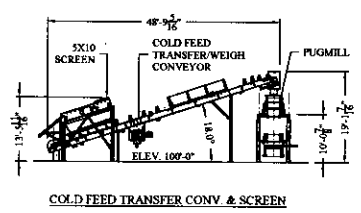
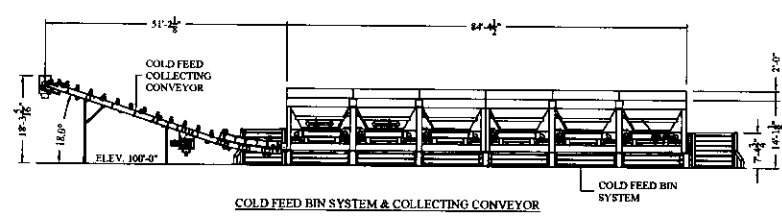
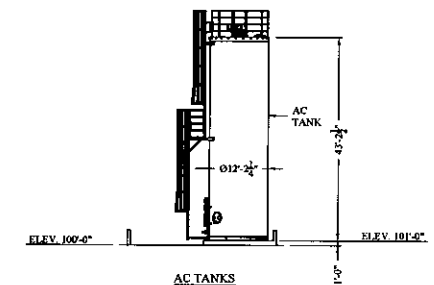
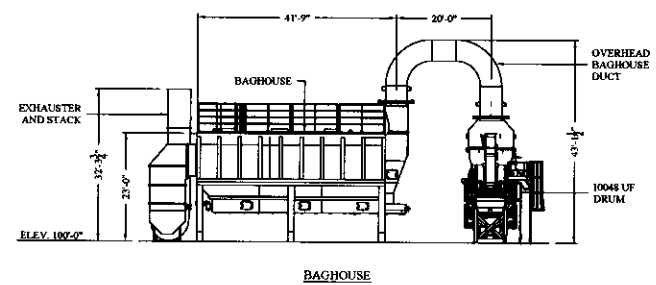
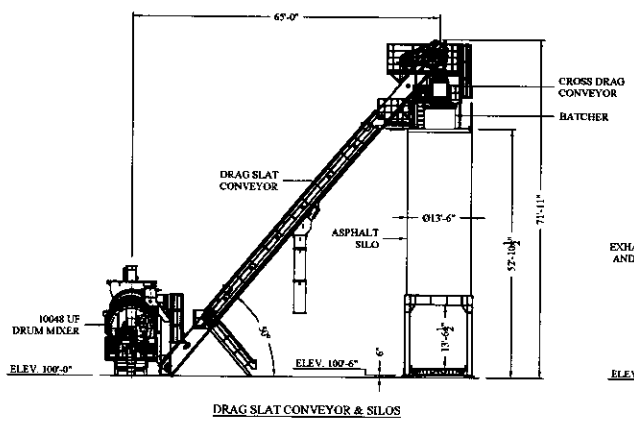


REV. NO.	REV. DATE	DESCRIPTION	APPROVED

AMT. NO. & QTY. NEXT ASSEMBLY: FIRST USED ON: DO NOT SCALE DRAWING	LIST OF MATERIALS DWNM 09/19/25 CHECK: DAL APP'D:	
FABRICATED WEIGHT: XXX SHIPPING WEIGHT: XXX AREA: 40.17'	SCALE: EXCEPT AS NOTED TOLERANCES: FRACTIONS: 1/16" DECIMALS: 2.005 ANGLES: 40.17'	<b>10048 UF PLANT</b> <b>EQUIPMENT LAYOUT PLAN</b> 1241-PP-01

REVISIONS			
ITL	DESCRIPTION	DATE	APPROVED
△	FOR CONSTRUCTION	08/28/25	DAL



**FOR CONSTRUCTION**  
ISSUE DATE 09/29/25

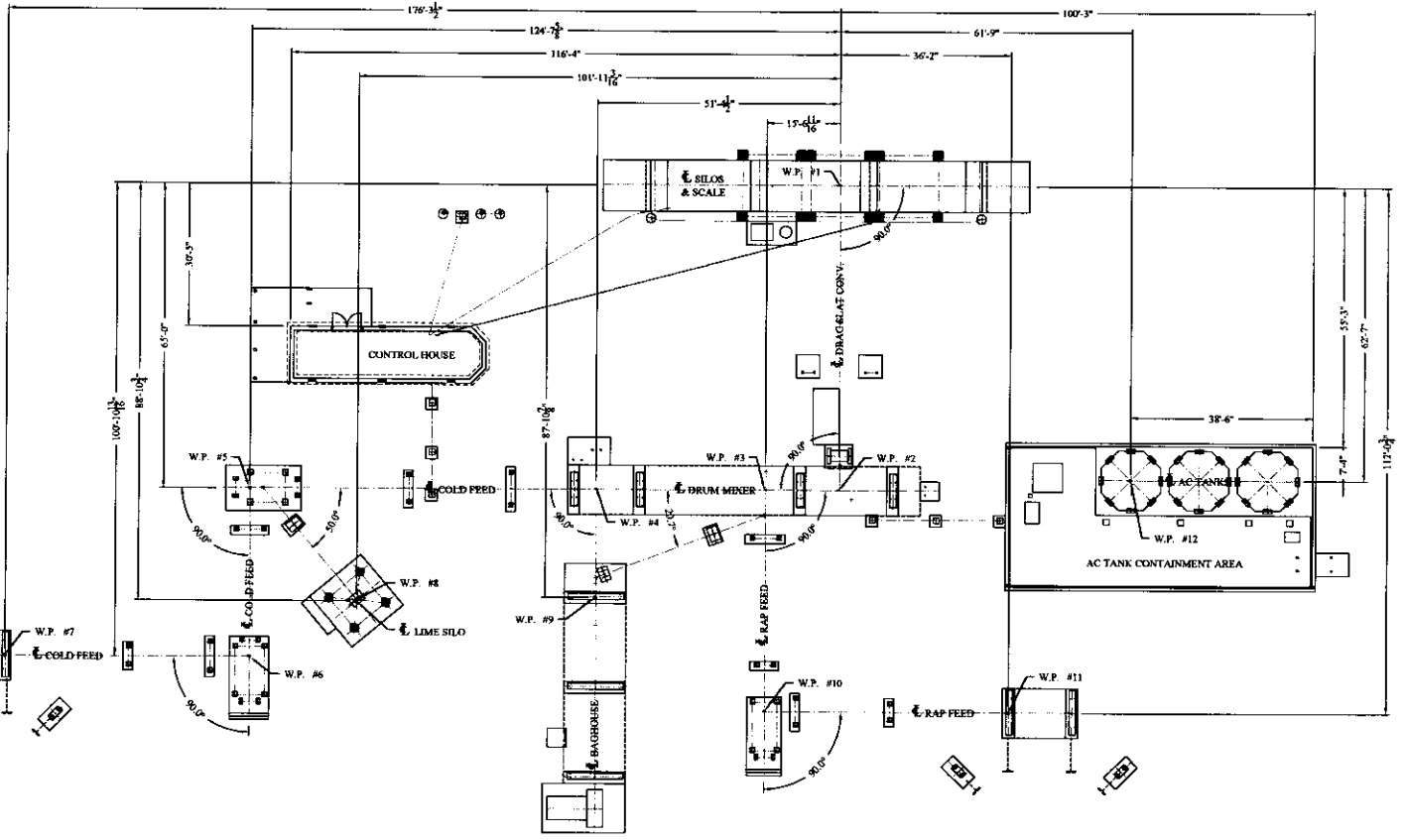
**NOTE:**  
ALL ELEVATIONS ARE  
REPRESENTATIVE  
ACTUAL ELEVATIONS  
MAY VARY

**REPRESENTATIVE EQUIPMENT ELEVATIONS**  
MR CONSTRUCTION  
ALMIX 10048 UF PLANT

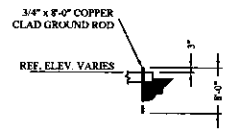
REV. NO.	DATE	BY	CHKD	DESCRIPTION	ISSUED BY	ISSUE DATE
01	02/14/25	DAL		LIST OF MATERIALS		
NEXT ASSEMBLY:		DRWN	02/14/25	DAL	ALMIX	
FIRST USED ON:		CHECK			10048 UF PLANT EQUIPMENT ELEVATIONS	
DO NOT SCALE DRAWING		FABRICATED			SCALE: TELEDIMENSIONS, EXCEPT AS NOTED	
		XXX			FRACTIONAL: 1/16	
		SHIPPING			DECIMAL: 2,000	
		XXX			ANGULAR: 40' 1"	
					1241-PP-02	SHEET 2 OF 2

REVISIONS			
LT#	DESCRIPTION	DATE	APPROVED
1			

- FOUNDATION GENERAL NOTES:**
- 1) ALL EQUIPMENT BEARS ON CONCRETE AT REF. ELEV. 100'-0" UNLESS OTHERWISE NOTED. LIQUID ASPHALT TANKS BEAR ON AN ELEVATED BENCH AT 101'-0". ASPHALT SILOS BEAR ON PIER AT ELEV. 100'-0".
  - 2) TOP OF CONCRETE AT ALL STAIR LANDINGS AND LADDER PADS IS 100'-0" UNLESS OTHERWISE NOTED.
  - 3) FOUNDATIONS SHALL BE DESIGNED BY THE OWNER'S ENGINEER. THE LOADS SHOWN ON THESE PLANS REPRESENTS MAXIMUM GRAVITY, WIND AND SEISMIC LOADS. WIND AND SEISMIC LOADS SHALL BE DETERMINED AND CONSIDERED BY THE OWNER'S ENGINEER IN ACCORDANCE WITH LOCAL AND STATE CODE REQUIREMENTS.
  - 4) THESE DRAWINGS SHOW THE MINIMUM CONCRETE BEARING AREAS SUGGESTED BY THE EQUIPMENT MANUFACTURER. LARGER CONCRETE FOOTINGS MAY BE REQUIRED BY THE OWNER'S ENGINEER TO CARRY THE IMPOSED LOADS.
  - 5) CONSULT WITH THE OWNER AND THE OWNER'S ENGINEER FOR LOCATIONS AND EXTENTS OF ADDITIONAL CONCRETE WORK REQUIRED INCLUDING BUT NOT LIMITED TO FOUNDATIONS, HOUSE-CLEANING SLABS, PAVEMENTS AND SIDEWALKS.
  - 6) WORK THIS DRAWING WITH ALL OTHER CONDUIT AND UTILITY PLANS TO PROVIDE REQUIRED CONCRETE SLAB AND FOOTING PENETRATIONS AND SLEEVES.
  - 7) DRUM MIXER, COLD FEED BIN, RAP BIN, AND BAGHOUSE SKID SUPPORTS SHALL BE ANCHORED TO CONCRETE FOOTINGS USING 1" DRILL IN ANCHORS AND BOLT WITH EMBEDMENT T.B.D. BY OTHERS UNLESS OTHERWISE DIRECTED BY THE OWNER'S ENGINEER.
  - 8) ASPHALT SILOS DRAG SLAT CONVEYOR, LIME SILO, AND AC TANKS SHALL BE ANCHORED BY WELDING TO EMBEDDED WELD PLATES DESIGNED BY OWNER'S ENGINEER AND SUPPLIED BY OTHERS.
  - 9) PIPE AND CABLE TRAY STANDS SHALL BE ANCHORED TO CONCRETE SLABS OR FOOTINGS USING 5/8" X 7" CONCRETE WEDGE ANCHORS UNLESS OTHERWISE DIRECTED BY THE OWNER'S ENGINEER.
  - 10) ALL LADDERS AND STAIRS SHALL BE ANCHORED TO CONCRETE PADS USING 1/2" X 4 1/2" CONCRETE WEDGE ANCHORS.
  - 11) UNLESS OTHERWISE INDICATED, ALL OTHER EQUIPMENT, NOT ANCHORED BY WELDING TO EMBEDDED WELD PLATES OR ANGLES, SHALL BE ANCHORED TO CONCRETE FOOTINGS USING 3/4" DRILL IN ANCHORS AND BOLT WITH EMBEDMENT T.B.D. BY OTHERS UNLESS OTHERWISE DIRECTED BY THE OWNER'S ENGINEER.
  - 12) EMBEDDED WELD PLATES AND ANGLES INDICATED ON THESE DRAWINGS ARE THE MINIMUM SPECIFIED BY THE EQUIPMENT MANUFACTURER. EMBEDDED WELD PLATES AND ANGLES SHALL BE DESIGNED BY THE OWNER'S ENGINEER INCLUDING PROPER ANCHORAGE TO CONCRETE USING BENT UP BARS OR REBAR STUDS. EMBEDDED WELD PLATES AND ANGLES ARE TO BE SUPPLIED BY OTHERS.
  - 13) ONE COPPER CLAD GROUND ROD SHALL BE PROVIDED BY OTHERS FOR EACH PIECE OF EQUIPMENT. THE GROUND ROD SHALL BE LOCATED ADJACENT TO THE EQUIPMENT BASE PLATE CLOSEST TO THE CONTROL HOUSE. GROUND RODS IN CONCRETE AREAS SHALL PROJECT 3" ABOVE THE TOP OF CONCRETE. ELEVATION GROUND ROSS SHALL BE MINIMUM 3/4" DIAMETER & 6' LONG.
  - 14) REFER TO CARDINAL SCALE DRAWING 031-03-B-01 FOR SCALE FOUNDATION INFORMATION AND DRAWING 3502-0671-03 FOR SCALE GROUNDING INFORMATION.



**FOR CONSTRUCTION**  
ISSUE DATE 09/29/25



**TYPICAL GROUND ROD DETAIL**  
(N.T.S.)

**FOUNDATION CONTROL PLAN**  
**MR CONSTRUCTION**  
**ALMIX 10048 UF PLANT**

REV. NO.	REV. NUMBER	DESCRIPTION	DATE	BY	CHKD.

APP. NO. & DWT.	REV. NO.	REV. NUMBER	DESCRIPTION	DATE	BY	CHKD.

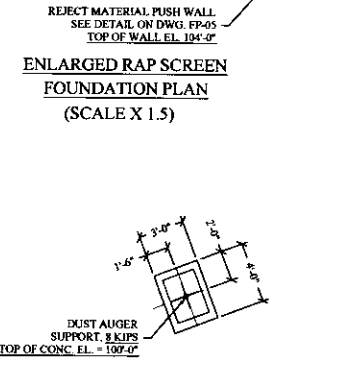
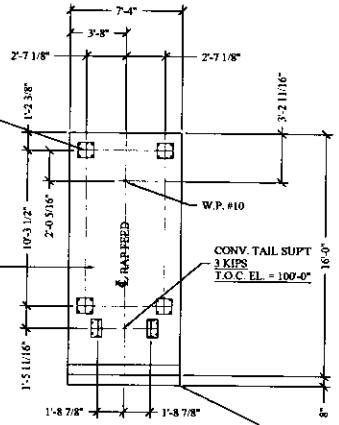
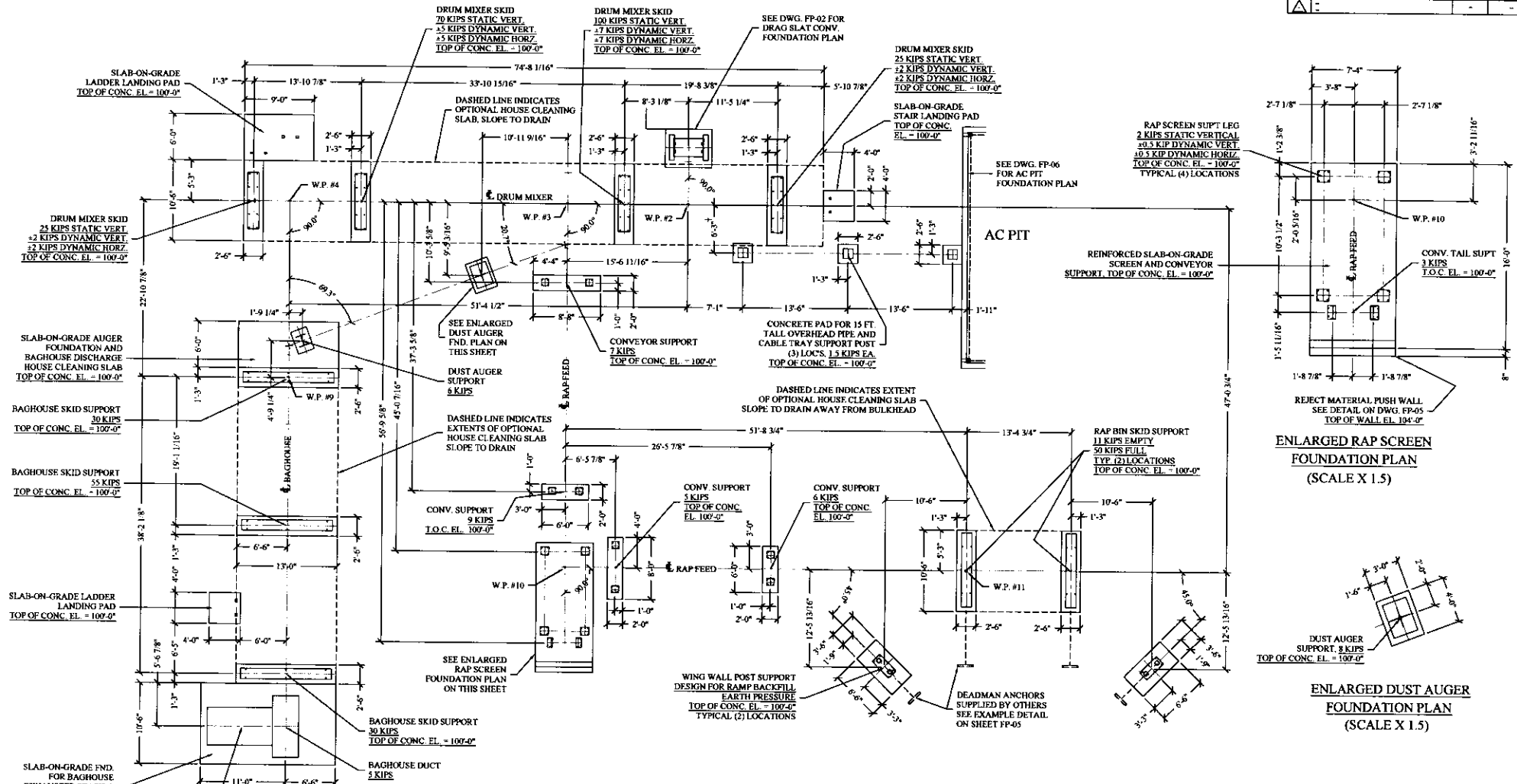
NEXT ASSEMBLY:		LIST OF MATERIALS	
DO NOT SCALE DRAWING	FABRICATED HEIGHT:	SCALE:	TOLERANCES:
	XXX	1/16	EXCEPT AS NOTED
	SHIPPING HEIGHT:	FUNCTIONAL:	±.005
	XXX	ASSEMBLY:	±0.1"

DATE	1241-FP-01	SHEET	11	REV.	OF	10
------	------------	-------	----	------	----	----



REVISIONS			
NO.	DESCRIPTION	DATE	APPROVED
1			



**DRUM, BAGHOUSE, AND RAP FOUNDATION PLAN**  
**MR CONSTRUCTION**  
**ALMIX 10048 UF PLANT**

NOTE:  
 ALL CONCRETE FOUNDATION DETAILS ARE SHOWN FOR REPRESENTATION ONLY. ACTUAL FOUNDATION DESIGN SHALL BE BY THE OWNER'S ENGINEER

**FOR CONSTRUCTION**  
 ISSUE DATE 09/29/25



REV. NO. & QTY.	REV. DATE	REV. BY	DESCRIPTION	DATE	BY

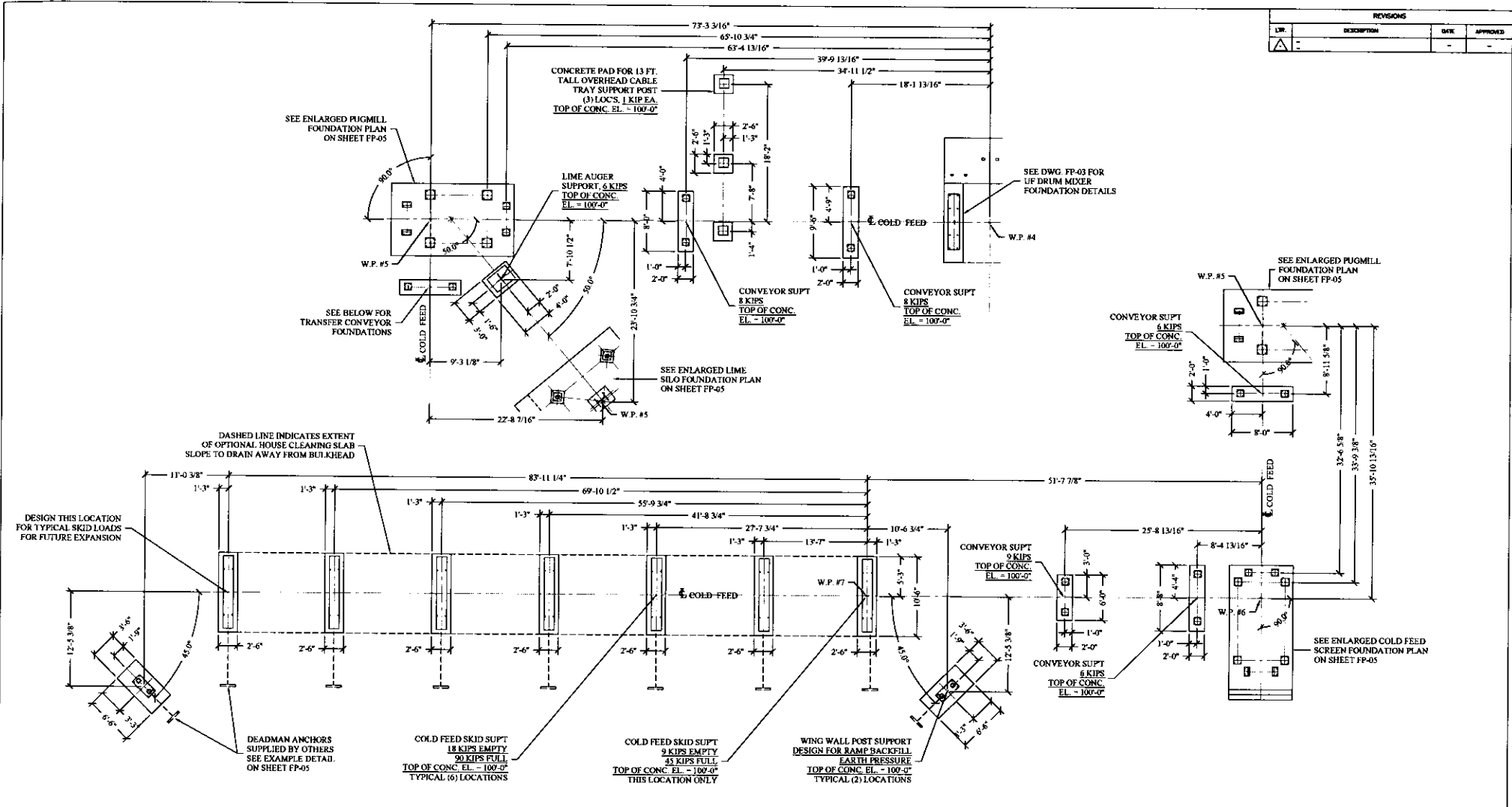
  

NEXT ASSEMBLY:		LIST OF MATERIALS	
DRAWN	09/29/25	DATE	
CHECKED			
FIRST USED ON:			
DO NOT SCALE DRAWING	FABRICATED WEIGHT:	APPL.	
	XXX	SCALE:	
	SHIPPING WEIGHT:	TOLERANCES:	
	XXX	CHECK AS NOTED	
		FRACTIONAL:	±1/16
		DECIMAL:	±.005
		ANGLE:	±0.1°

<b>ALMIX</b>	
DRUM, BAGHOUSE, & RAP FOUNDATION PLAN	
1241-FP-03	

REVISIONS			
NO.	DESCRIPTION	DATE	APPROVED
1			



**COLD FEED FOUNDATION PLAN  
MR CONSTRUCTION  
ALMIX 10048 UF PLANT**

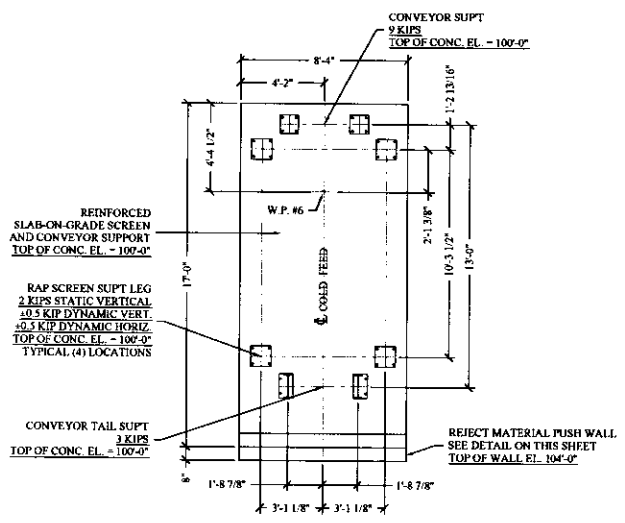
**NOTE:**  
ALL CONCRETE FOUNDATION DETAILS ARE SHOWN FOR REPRESENTATION ONLY. ACTUAL FOUNDATION DESIGN SHALL BE BY THE OWNER'S ENGINEER

**FOR CONSTRUCTION**  
ISSUE DATE 09/29/25

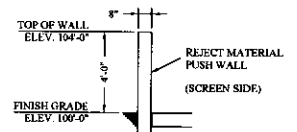


REV. NO. & BY	REV. DATE	REV. REASON	DESCRIPTION	APPROVAL/REVISION	DATE
NEXT ASSEMBLY:					
FIRST USED ON:		DATE	BY	DAL	
DO NOT SCALE DRAWING					
FABRICATED PER:		SCALE:	ALMIX		
XXX		TO DIMENSIONS, EXCEPT AS NOTED			
SHIPPING WEIGHT:		FRAC TON	NET WT	GROSS WT	
XXX		1216	4255	5471	
XXX		40.11	1241-FP-04		

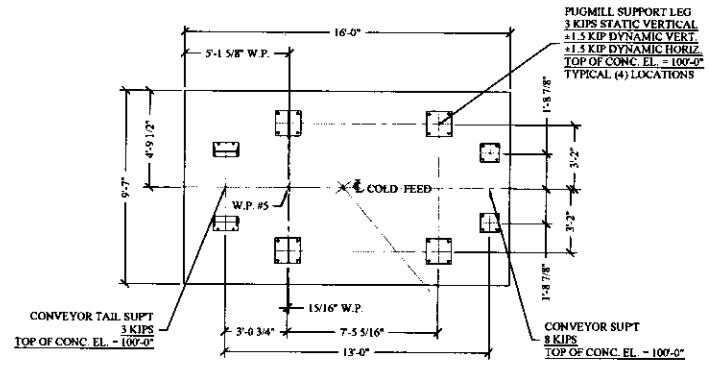
REVISIONS			
NO.	DESCRIPTION	DATE	APPROVED



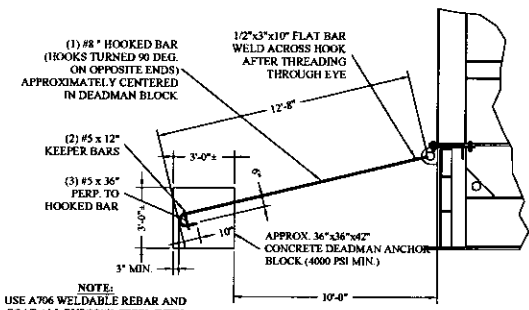
**ENLARGED COLD FEED SCREEN  
FOUNDATION PLAN  
(SCALE X 2)**



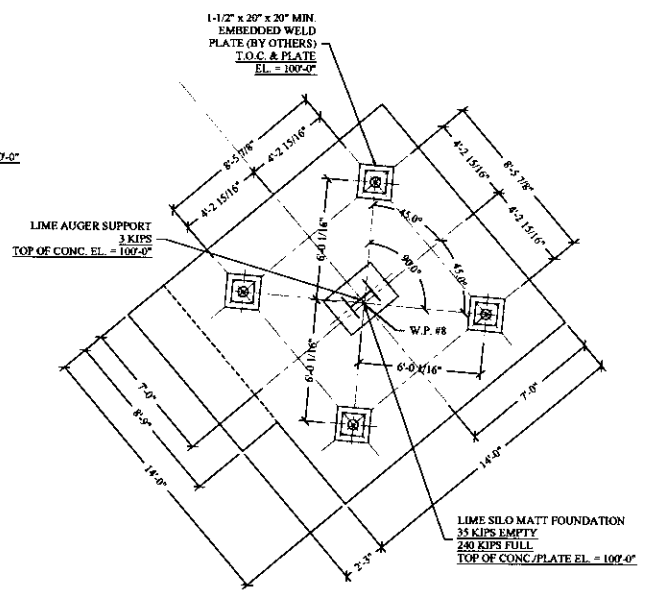
**REJECT MATERIAL  
PUSH WALL DETAIL  
(N.T.S.)**



**ENLARGED PUGMILL  
FOUNDATION PLAN  
(SCALE X 2)**



**EXAMPLE DEADMAN  
ANCHOR DETAIL  
(N.T.S.)**



**ENLARGED LIME SILO  
FOUNDATION PLAN  
(SCALE X 2)**

**ENLARGED COLD FEED & LIME SILO FOUNDATION PLANS  
MR CONSTRUCTION  
ALMIX 10048 UF PLANT**

NOTE:  
ALL CONCRETE FOUNDATION DETAILS ARE SHOWN FOR REPRESENTATION ONLY. ACTUAL FOUNDATION DESIGN SHALL BE BY THE OWNER'S ENGINEER

**FOR CONSTRUCTION**  
ISSUE DATE 09/29/25



REV.	NO.	DATE	DESCRIPTION	BY	CHKD.

NEXT ASSEMBLY:		LIST OF MATERIALS	

DATE: 09/29/25	DRAWN: DAL	SCALE: AS SHOWN
CHECKED: [ ]	APPROVED: [ ]	TOLERANCES: EXCEPT AS NOTED
		SUPPLYING: FURNISH TO: ±1/16

<b>ALMIX</b>		1241-FP-05
ENLARGED COLD FEED & LIME SILO FOUNDATION PLAN		REV. 6



# Permit/Recommendation

This document is proof that a Notice of Intent has been filed as per  
Section 41-67-5, Mississippi Code of 1972, Annotated

This document is a permit/recommendation for the installation of a septic system. It is not a guarantee of performance. The applicant is responsible for obtaining all necessary permits from the local health department. The permit/recommendation is valid for one (1) year from the date of issuance. The applicant is responsible for maintaining the septic system in accordance with the manufacturer's instructions. The permit/recommendation is not valid if the applicant has not obtained all necessary permits from the local health department. The permit/recommendation is not valid if the applicant has not obtained all necessary permits from the local health department. The permit/recommendation is not valid if the applicant has not obtained all necessary permits from the local health department.

Applicant	Property	Soil and Site Evaluation
Laura Jones 31 Hwy 328 Oxford MS 38655	87 CR 166 Oxford 38655 Section:      Township:      Range: Subdivision Name: Lot Number: Lot Size: 22.92 Acres 0 sq. ft.	Slope: 3 % Soil Textures: Top Soil: Sandy Clay Loam Sub Soil: Sandy Clay Loam Seasonal High Water: 30 Inches Restriction: 25 Inches Sensitive Water: No

Application	Water Supplies	Soil and Site Evaluation
Type of Office: Estimated Usage: 100 GPD Application Type: Notice Of Intent (Residential) Commercial Establishment + Final Approval (\$4,250)	Drinking: Public	ID: 336972/256949 Date Issued: 12/9/2025 Expiration Date: 12/9/2027 Non-transferable, valid for one (1) year from date issued. Notice of Intent filed: 12/03/2025

GPD = Gallons Per Day    N/A = Not Available    H = Horizontal    T = Triangular

Septic Tank (with baffles):	Septic Tank (without baffles):	Advanced Treatment System (ATS):
N/A	N/A	400 GPD

Maximum Depth:	Backfill Required:	12 inches minimum above the top of aggregate or prod
13 inches		

Aggregate (Gravel/Tire Chips) Options		
Trench (2 ft wide): N/A	Trench (3 ft wide): N/A	Absorption Bed: N/A

### Aggregate Replacement Options

Large Diameter Pipe	Chambers
Double 6 inch: N/A 8 inch: N/A 10 inch: N/A	Total Coverage Area Required: N/A Linear Footage Required for Selected Chamber Widths: 16": N/A    22": N/A    34": N/A

Expanded Polystyrene System (EPS)	Multi-Pipe System (MPS)
3-10H: N/A    1-12H: N/A 3-10T: N/A    2-12H: N/A 3-12H: N/A	MPS - 9: N/A    MPS 3609: N/A MPS - 11: N/A    MPS 3611: N/A MPS - 13: N/A    MPS 3613: N/A MPS - 14: N/A

ATS Specific Disposal Options	Additional Disposal Options
Drip Irrigation: 16.693 Feet    Backfill Require: 0 Inches Spray Irrigation: 106.692 Square Feet    Backfill Require: 0 Inches Overland Discharge: 1 Point: 76 feet 2 Point: 38 feet 4 Point: 19 feet	Elevated Sand Mound: Basal: N/A Absorption: N/A

Grid area for notes or drawings.

**Notes:**

Author: BRENT JOHNS

If any dozerwork takes place , please call and let me re-evaluate.

**Notes:**

Please make several copies of this document (Permit/Recommendation), and supply to the following if applicable:

- \* Public utility supplying water, to receive a water meter
- \* Certified well driller, if water source is from a private well
- \* County Code Office (Planning Department), placement/building permit
- \* Certified Installer, for installation

**REMINDER:** Approval of the design, construction or installation of an Individual On-site Wastewater Disposal System by the Department is required. The Certified Installer is responsible for notifying the Department 24-hours before beginning installation of your Individual On-site Wastewater Disposal System and, at that time, to schedule a time for inspection of the system with the Department.

**After the inspection, you must provide the Department with the following to obtain Final Approval:**

- \* Affidavit - Installation (From the Certified Installer)
- \* Affidavit - Maintenance (From you, if an Advanced Treatment System was installed)
- \* An additional fee of \$97.50 may be required for Final Approval, if not paid with initial application (Please see "Application" box on this form).

PLEASE BE AWARE, the Department cannot give Final Approval to any installation that occurs without inspection by the Department at the time of installation.

**REMINDER:** If any person or Certified Installer fails to obtain Final Approval or submit an Affidavit of proper installation to the Department in the installation of the system, the Department, after due notice and hearing, may levy an administrative fine not to exceed \$10,000.00. Also, if any person is operating in the state as an installer without certification by the Department, the Department, after due notice and opportunity for an administrative hearing, may impose a monetary penalty not to exceed \$10,000.00 for each violation as per Section 41-67-7(4) and 41-67-25(3) of the Mississippi Individual On-site Wastewater Disposal System Law.

Signature: [Handwritten Signature] Date: 12/9/25