

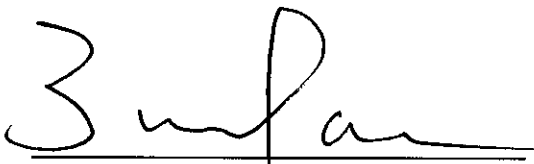
**ORDER: APPROVE THE HAMLET AT METTS MEADOWS PRELIMINARY PLAT
APPROVAL FOR PHASES 1, 2 AND 3**

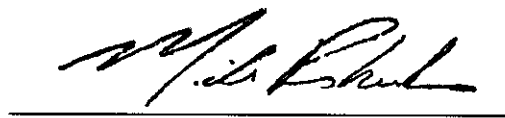
Motion was made by Tim Gordon, duly seconded by Greg Bynum, to approve the Hamlet at Metts Meadows Preliminary Plat.

The vote on the motion was as follows:

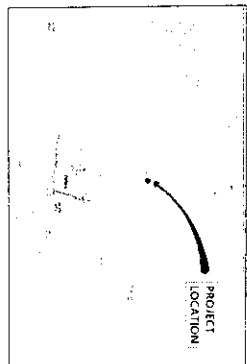
Supervisor Brent Larson, voted yes
Supervisor John Morgan, voted yes
Supervisor Tim Gordon, voted yes
Supervisor Scott Allen, voted yes
Supervisor Greg Bynum, voted yes

After the vote, President Larson, declared the motion carried, this the 1st day of December, 2025.


Brent Larson, President
Board of Supervisors


Mike Roberts, Chancery Clerk

THE HAMLET AT METTS MEADOWS PHASE 1 OLD HWY 7 NORTH LAFAYETTE COUNTY, MISSISSIPPI



INDEX OF PLANS	
CONCRETE	C-100
SITE LAYOUT	C-100
SITE MAPS	C-101
EXISTING CONDITIONS	C-200
UTILITY PLAN	C-500
WATER PLAN	C-501
SEWER STREET PLAN	C-502
SEWER SERVICE PLAN	C-503
LANDING PLAN	C-600
PLAN AND PROFILES	C-601
ROBSON CONTROL PLAN	C-700
SITE DETAILS	C-800
WATER DETAILS	C-801
SEWER DETAILS	C-802
STAMP DETAILS	C-803
OUTLET CONTROL STRUCTURE DETAILS	C-804
ROBSON CONTROL DETAILS	C-805

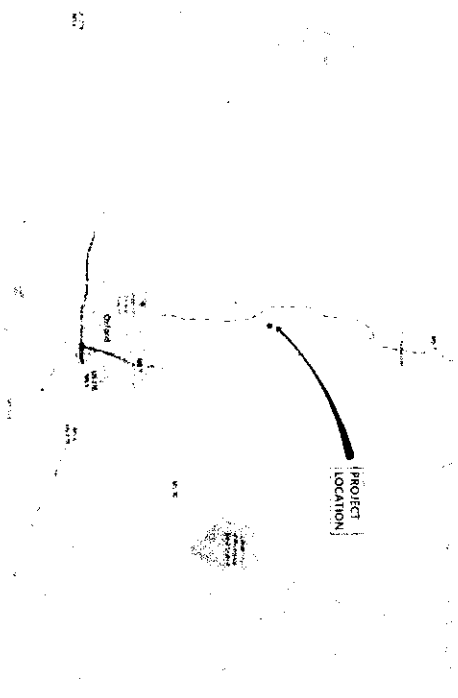
**JM ENGINEERING
AND DESIGN, LLC**
OXFORD, MS
(662) 907-8801



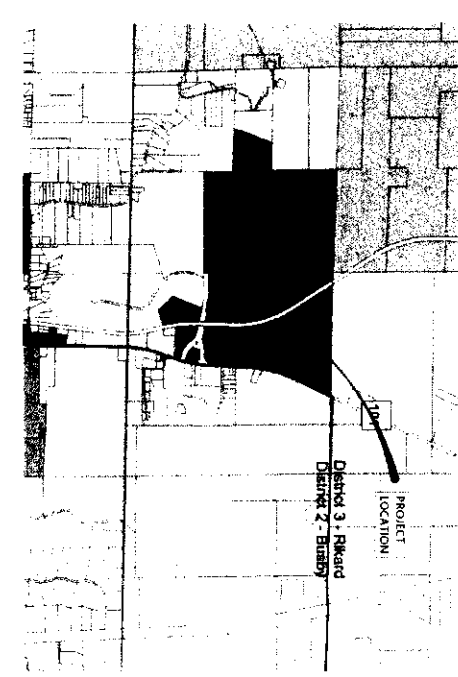
**THE HAMLET AT METTS MEADOWS
PHASE 1
OLD HWY 7
LAFAYETTE COUNTY, MISSISSIPPI**

DRAWN BY: JAM
CHECKED BY: JAM
PROJECT NO: JXXE
DATE: 07/10/2024
SCALE:

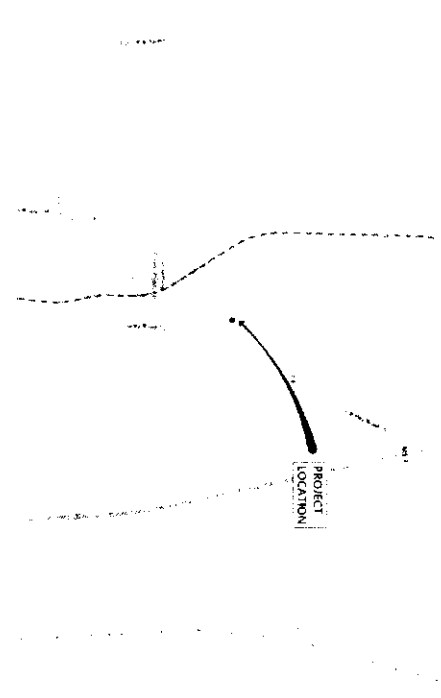
C-000



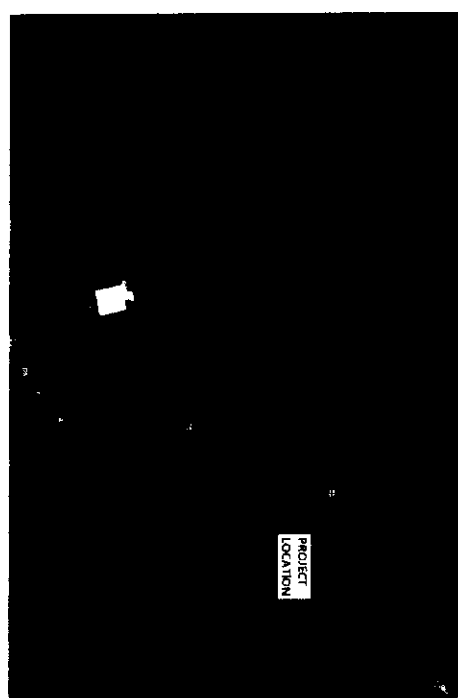
LOCATION MAP



ZONING MAP (ZONING: S-R)



VICINITY MAP



AERIAL MAP



JM ENGINEERING AND DESIGN, LLC
 OXFORD, MS
 (601) 907-4829

SITE MAPS
**THE HAMLET AT METTS MEADOWS
 PHASE 1**
 OLD HWY 7
 LAFAYETTE COUNTY, MISSISSIPPI

DRAWN BY	JAM
CHECKED BY	JAM
PROJECT NO.	XXXX
DATE	07/15/2015
SCALE	
REVISION	

C-101

OWNER'S CERTIFICATE

I, Daniel Horton, Managing Member of HACO INDUSTRIES, LLC, the Owner of the Tract of Land Herein Described, Certify that We had Cause and Used to be Satisfied and Informed, As Shown by the Attached Plat of the Grove at Grand Oaks Phase 6B Subdivision, and the Streets and Easement in the Tract of the Public, Private Streets Are Herby Dedicated to the Use by the Public and the Private, and the Streets Which Serve the Subdivision, Utility Easements, and are also Dedicated to the Public and/or Private Utility Companies Which Serve the Subdivision Such as Subdivision and Dedication is the Owner's Own Act and Deed of Their Own Free Will.

Witness My Hand and Signature this _____ Day of _____, 2023.
 Daniel Horton, Managing Member
 Henry John

INCENTIVE CERTIFICATE

I Certify that the Grove at Grand Oaks Phase 6B Subdivision in Lafayette County, Mississippi is in conformity with the Design Requirements of the Subdivision Regulations and Specific Conditions imposed on this development, and takes into account all applicable Federal, State, and Local Laws and Regulations.

Witness My Hand and Signature this _____ Day of _____, 2023.
 Joseph R. Moore
 Mississippi Pl No. 204.11

COUNTY OF LAFAYETTE, STATE OF MISSISSIPPI

Personally Appeared Before Me, Mike Roberts, Chapter Clerk, in and for Lafayette County, Mississippi, Michael Horton, Managing Member of HACO INDUSTRIES, LLC, and I signed the herein Owner's Certificate that was signed and returned to the Clerk free Act and Deed and also appeared Joseph Chad Meyer, Professional Surveyor, who executed the attached Surveyor's Certificate and acknowledged that it was signed and returned as the Own free Act and Deed.

Witness My Hand and Signature this the _____ Day of _____, 2023.
 Mike Roberts
 Chapter Clerk

COUNTY OF LAFAYETTE, STATE OF MISSISSIPPI

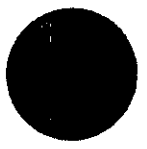
I, Mike Roberts, Chapter Clerk, in and for Lafayette County, Mississippi, hereby certify that this instrument was read for Record to My Office at _____ O'clock of the _____ Day of _____, 2024, and was fully recorded in that volume _____, Page _____.

Witness My Hand and Signature this the _____ Day of _____, 2023.
 Mike Roberts
 Chapter Clerk

RESTRICTION COVENANTS

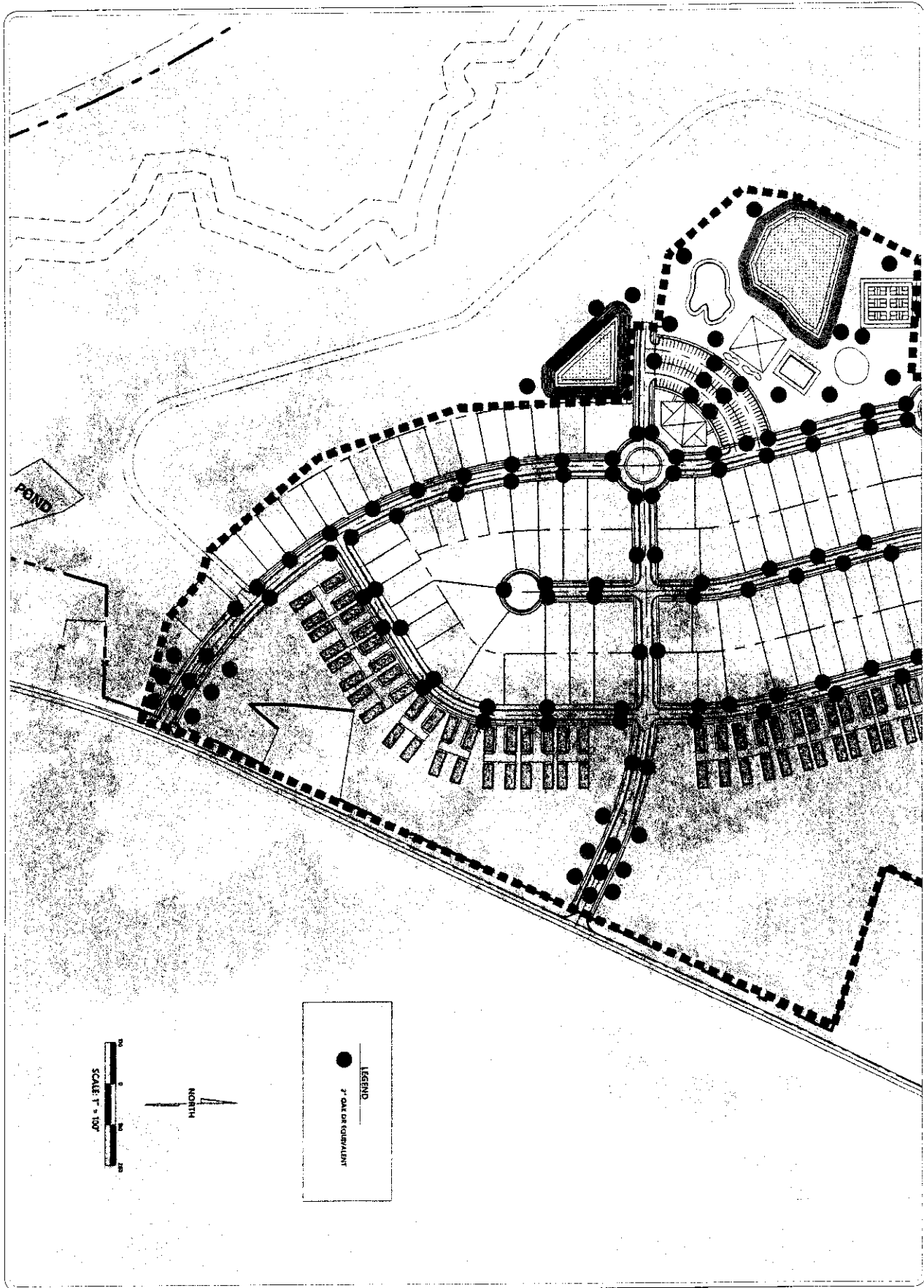
Recorded in Instrument No. _____ of this land Records in the Chapter Clerk's Office of Lafayette County, Mississippi.

HM ENGINEERING AND DESIGN, LLC
 (601) 881-4803



PRELIMINARY PLAT
THE HAMLET AT METTS MEADOWS
PHASE 1
OLD HWY 7
LAFAYETTE COUNTY, MISSISSIPPI

DRAWN BY	JAM
CHECKED BY	JAM
PROJECT NO.	2004
DATE	08/07/2023
SCALE	
REVISION	

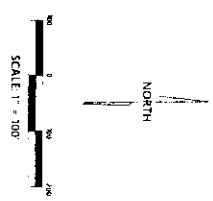
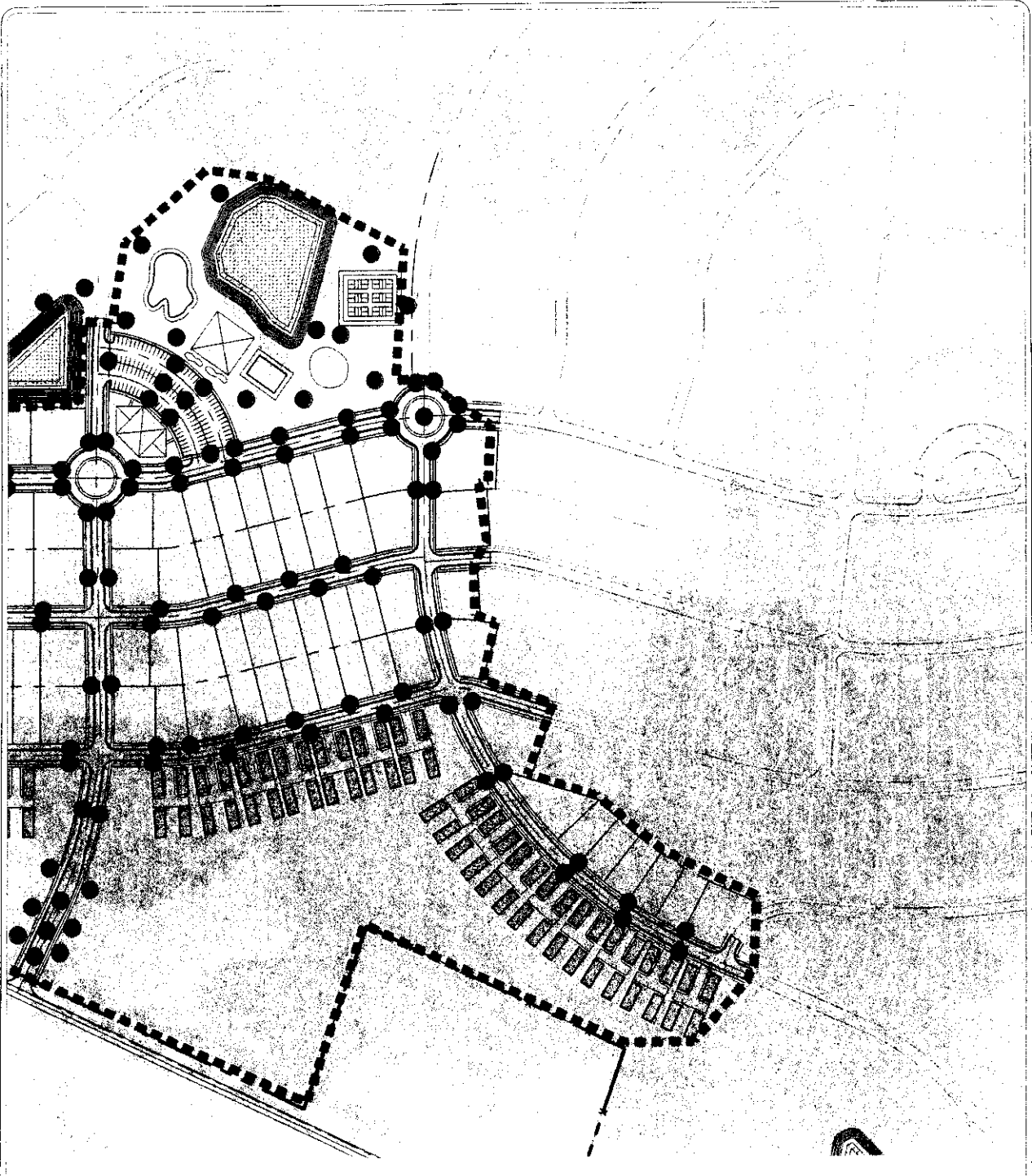


C-300

LANDSCAPE PLAN
THE HAMLET AT METTS MEADOWS
 PHASE 1
 OLD HWY 7
 LAFAYETTE COUNTY, MISSISSIPPI

JM ENGINEERING AND DESIGN, LLC
 OXFORD, MS
 (662) 901-9603

DRAWN BY	RJM	CHECKED BY	RJM
PROJECT NO.	XXXX	DATE	07/14/05
SCALE	1" = 80'	REVISION	



LEGEND
 ● OAK OR EQUIVALENT

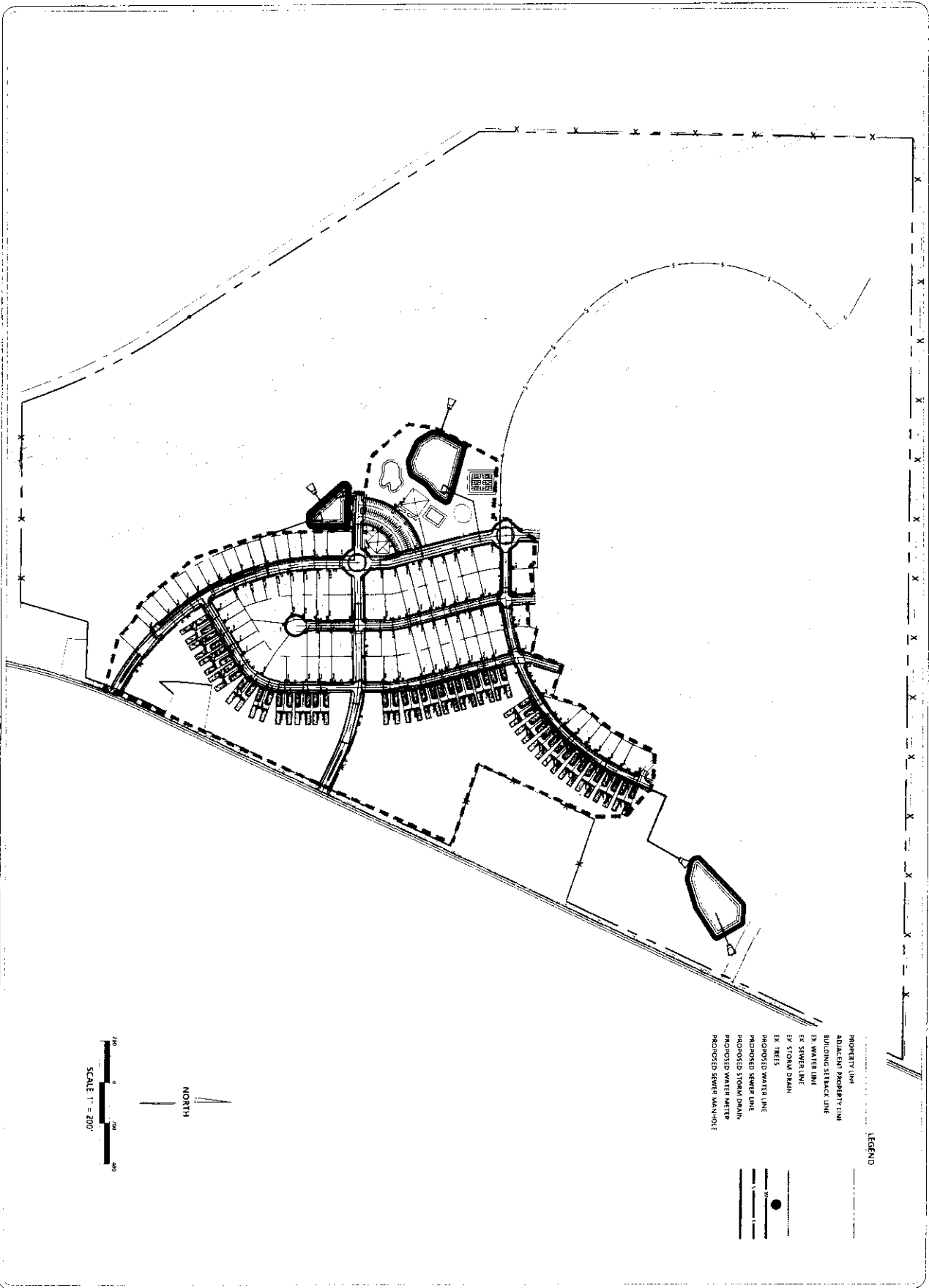
C-300-1

DRAWN BY: JMM
 CHECKED BY: JMM
 PROJECT NO: 2024
 DATE: 07/15/2025
 SCALE: 1" = 80'
 REVISION:

LANDSCAPE PLAN
THE HAMLET AT METTS MEADOWS
 PHASE 1
 OLD HWY 7
 LAFAYETTE COUNTY, MISSISSIPPI

JM ENGINEERING
 AND DESIGN, LLC
 OREGON, MO
 (662) 300-1803





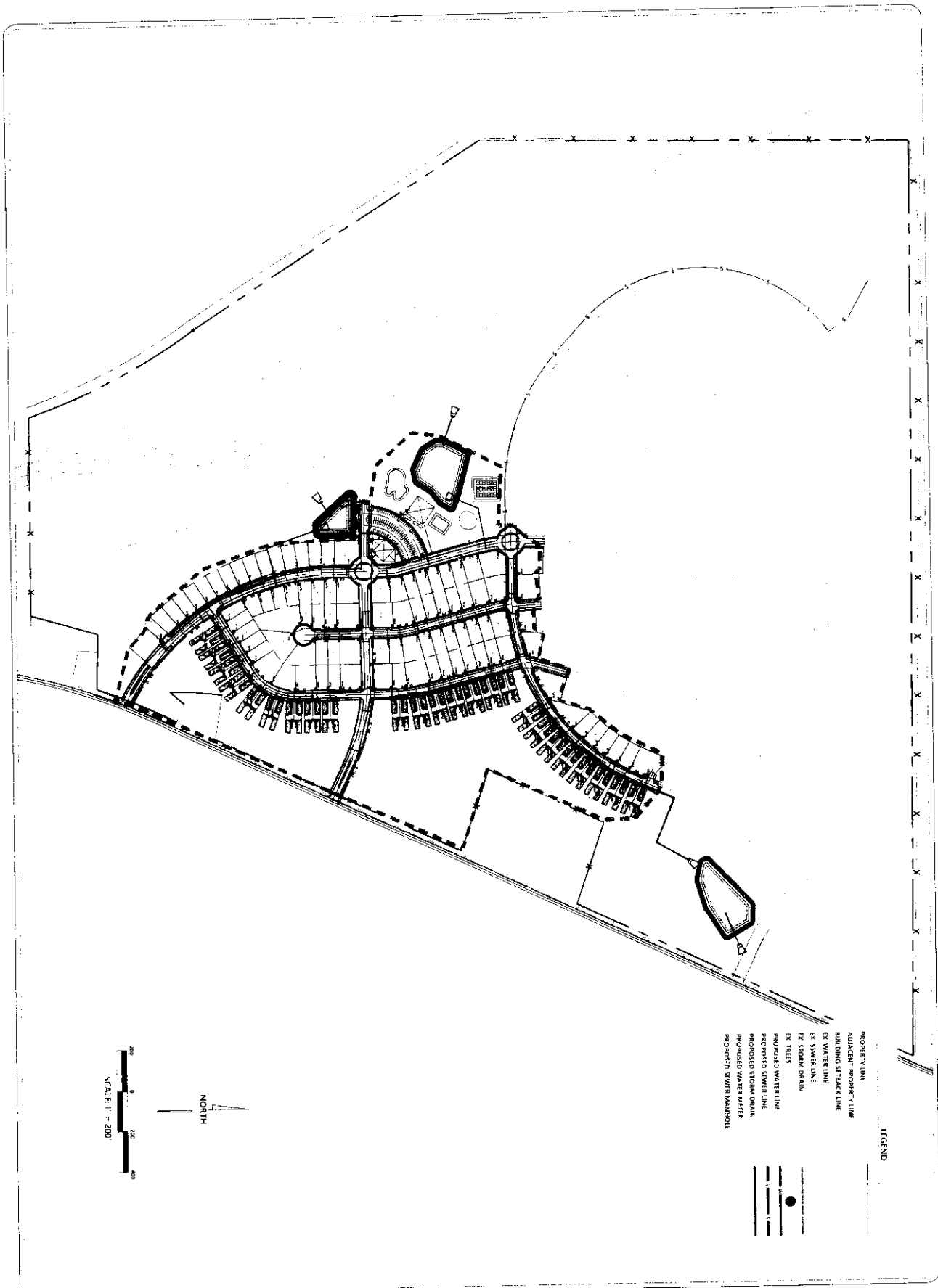
C-500

DRAWN BY: JMM
 CHECKED BY: JMM
 PROJECT NO: XXXX
 DATE: 07/19/2005
 SCALE: 1" = 200'
 REVISION:

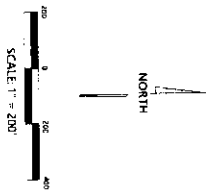
UTILITY PLAN
THE HAMLET AT METTS MEADOWS
PHASE 1
 OLD HWY 7
 LAFAYETTE COUNTY, MISSISSIPPI

JM ENGINEERING
 AND DESIGN, LLC
 1401 W. MAIN ST.
 WASHINGTON, MS 39291





- LEGEND**
- PROPERTY LINE
 - ADJACENT PROPERTY LINE
 - BUILDING STACK LINE
 - EX WATER LINE
 - EX SEWER LINE
 - EX STORM DRAIN
 - EX TREES
 - PROPOSED WATER LINE
 - PROPOSED SEWER LINE
 - PROPOSED STORM DRAIN
 - PROPOSED WATER METER
 - PROPOSED SEWER MANHOLE



C-500

DRAWN BY: JRM
 CHECKED BY: JRM
 PROJECT NO.: 2015-0015
 DATE: 07/15/2015
 SCALE: 1" = 200'
 REVISION:

UTILITY PLAN
THE HAMLET AT METTS MEADOWS
 PHASE 1
 OLD HWY 7
 LAFAYETTE COUNTY, MISSISSIPPI

JRM ENGINEERING
 AND DESIGN, LLC
 1001 N. HWY 7
 LAFAYETTE, MS 39303

