

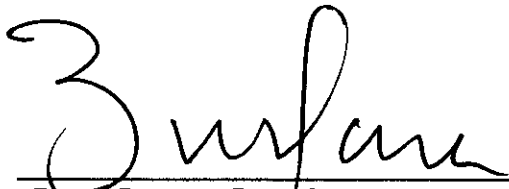
**ORDER: AUTHORIZE SHERIFF'S DEPARTMENT PCO #6 FOR CHANGES TO  
TOILET COMPARTMENT LIGHTING AND SENSORS AND SINK AND LAVATORY  
CHANGES**

Motion was made by Scott Allen, duly seconded by Greg Bynum, to authorize Sheriff's Department PCO #6 for changes to toilet compartment lighting and sensors and sink and lavatory changes.

The vote on the motion was as follows:

Supervisor Brent Larson, voted yes  
Supervisor John Morgan, voted yes  
Supervisor Tim Gordon, voted yes  
Supervisor Scott Allen, voted yes  
Supervisor Greg Bynum, voted yes

After the vote, President Larson, declared the motion carried, this the 3<sup>rd</sup> day of September, 2024.

  
\_\_\_\_\_  
**Brent Larson, President  
Board of Supervisors**

  
\_\_\_\_\_  
**Mike Roberts, Chancery Clerk**



August 28, 2024

Joel Hollowell, Director of Development Services  
Lafayette County  
300 North Lamar Boulevard  
Oxford, MS 38655

RE: A New Sheriff's Department Building  
and Improvements at the Detention  
Center— Phase 2 (Rebid 2)  
Lafayette County Board of Supervisors  
**PCO #6 – Toilet Compartment Lighting & Sensors; Sink & Lavatory Changes**

Dear Joel:

I attach the Contractor's PCO #6 to add LED flat panel fixtures and occupancy sensors within each toilet compartment in the multi-fixture restrooms located on the ground floor and second floor (Women's Restroom 128, Men's Restroom 129, Men's Restroom 218, and Women's Restroom 219) as indicated in the revised lighting plans E1.1 and E1.2 and revised light fixture schedule on E0.0 issued with RFP#3 (also attached). This change was necessary to illuminate the interior of the privacy-type toilet compartments which extend from the floor to within 4-inches of the ceiling, making them more like separate rooms than traditional toilet compartments. The toilet compartments were changed from standard type partitions to privacy type partitions at the request of the Sheriff's Department late in the Construction Documents phase, but this change was not coordinated with RCP's and lighting plans at that time. RFP#3 also changed all sinks and lavatories from drop-in to undermounted type which are more appropriate for the quartz countertops and vanity tops. This change was done at no additional cost.

The Contractor's total proposed change to the Contract Sum for the additional lighting and sensors in the restrooms is **\$11,865.80**. 14 additional Days are also included in this PCO to perform the additional work and for processing and/or lead times associated with this work. We have reviewed the proposed costs and additional time requested, found them to be reasonable, and recommend that this proposal be accepted as soon as possible.

Please advise if you have any questions.

Sincerely yours,

Paul A. Waddell, Assoc. AIA  
Senior Project Manager  
Howorth & Associates Architects

Enclosures



2006 ASPEN COVE · BRANDON, MS · 39042 PHONE: (601) 824-4646 FAX: (601) 824-2211 www.flagstarconstruction.com

August 22, 2024

Attn: Paul Waddell  
Howorth and Associates Architects  
800 North Lamar, Suite 4  
Oxford, MS 38655

Re: LCSD Building and Improvements- Phase 2  
Oxford, Mississippi

Change Proposal 006

Mr. Waddell:

Please accept the following as our proposal for costs associated with work indicated in RFP #3. The total cost is as follows:

• Tidwell Electric (Proposal Attached).....	\$10,918.62
• Fireline (Correspondence Attached).....	\$0.00
• Tristar (Correspondence Attached).....	\$0.00
• Missco (Correspondence Attached).....	\$0.00
• Sales Tax (3.5%).....	\$382.15
• Subtotal.....	\$11,300.77
• P&O (5%).....	\$565.03
• Total Cost.....	\$11,865.80

This proposal expires in fourteen (14) days. We hereby request the addition of fourteen (14ea) days to the contract duration for processing and completion of this work. Please provide approval status as quickly as possible.

Please do not hesitate to call me if you have any questions or need any additional information regarding the above.

Sincerely,

FLAGSTAR CONSTRUCTION COMPANY, INC.



R. Lee Kittrell  
Project Manager



## Change Order #4

**Project:**  
LCSD PHASE 2 REBID  
Contract #808733539  
Contract Date: 1/24/2024

**Customer:**  
FlagStar Construction

**Prepared By:**  
Dustin Tidwell  
dustin.tidwellelectric@gmail.com  
8/15/2024

### 1. BATHROOM REVISION

**\$10,918.62**

*Description of Change:*

ADD LIGHTING AND SENSORS PER RFP #3

Item	QTY	Price	Subtotal
CONDUIT GROUND FLOOR	70.00	\$0.45	\$31.50
CONDUIT LABOR GROUND FLOOR	1.75	\$60.00	\$105.00
CONDUIT FITTINGS GROUND FLOOR	1.00	\$8.12	\$8.12
CONDUIT FITTINGS LABOR GROUND FLOOR	1.00	\$60.00	\$60.00
4 Square Deep Box GROUND FLOOR	12.00	\$1.26	\$15.12
4 Square Deep Box LABOR GROUND FLOOR	4.80	\$60.00	\$288.00
LIGHTING & SENSORS GROUND FLOOR	12.00	\$217.86	\$2,614.32
LIGHTING & SENSOR LABOR GROUND FLOOR	11.66	\$60.00	\$699.60
#12 WIRE GROUND FLOOR	250.00	\$0.26	\$65.00
#12 WIRE LABOR GROUND FLOOR	1.19	\$60.00	\$71.40
LOW VOLTAGE WIRING GROUND FLOOR	40.00	\$0.19	\$7.60
LOW VOLTAGE WIRING LABOR GROUND FLOOR	0.46	\$60.00	\$27.60
CONDUIT 2ND FLOOR	80.00	\$0.45	\$36.00
CONDUIT LABOR 2ND FLOOR	2.00	\$60.00	\$120.00
CONDUIT FITTINGS 2ND FLOOR	1.00	\$9.00	\$9.00
CONDUIT FITTINGS LABOR 2ND FLOOR	1.00	\$60.00	\$60.00
4 Square Deep Box 2ND FLOOR	16.00	\$1.26	\$20.16
4 Square Deep Box LABOR 2ND FLOOR	6.40	\$60.00	\$384.00
LIGHTING & SENSORS 2ND FLOOR	16.00	\$217.86	\$3,485.76
LIGHTING & SENSORS LABOR 2ND FLOOR	15.55	\$60.00	\$933.00
#12 WIRE 2ND FLOOR	270.00	\$0.26	\$70.20
#12 WIRE LABOR 2ND FLOOR	1.96	\$60.00	\$117.60
LOW VOLTAGE WIRE 2ND FLOOR	60.00	\$0.19	\$11.40
LOW VOLTAGE WIRE LABOR 2ND FLOOR	0.69	\$60.00	\$41.40

4 SQUARE BLANK COVER GROUND FLOOR	10.00	\$0.62	\$6.20
4 SQUARE BLANK COVER LABOR GROUND FLOOR	1.51	\$60.00	\$90.60
4 Square Blank Cover 2ND FLOOR	12.00	\$0.62	\$7.44
4 Square Blank Cover LABOR 2ND FLOOR	1.81	\$60.00	\$108.60
P/OH	1.00	\$1,424.00	\$1,424.00

---

**Total Price: \$10,918.62**

Original Contract Sum: \$1,500,000.00  
Net Change by Previously Authorized Change Orders: \$8,224.00  
Adjusted Contract Sum Prior to This Change Order: \$1,508,224.00  
Value of This Change Order: \$10,918.62  
Revised Contract Total: \$1,519,142.62

We hereby agree to make the changes specified for Total Price listed above.

CONTRACTOR: \_\_\_\_\_

Tidwell Holdings LLC

---

The above prices and specifications of this Change Order are satisfactory and are hereby accepted. All work shall be performed under the same terms and conditions as specified in the original contract unless otherwise stipulated.

ACCEPTED BY: \_\_\_\_\_

FlagStar Construction

## Lee Kittrell

---

**From:** Jay White <Jay@fireline-ms.com>  
**Sent:** Wednesday, August 21, 2024 4:06 PM  
**To:** Lee Kittrell  
**Subject:** RE: A New Sheriff's Department Building and Improvements at the Detention Center - Phase 2 (REBID 2) - REQUEST FOR PRICING #3

Lee,

No additional cost to Fireline for this RFP #3.

Jay White - Estimator  
**Fireline, Inc.**  
662-841-2595 (w)  
662-791-9097(m)

**From:** Lee Kittrell <lee@flagstarconstruction.com>  
**Sent:** Monday, August 19, 2024 10:22 AM  
**To:** Jay White <Jay@fireline-ms.com>  
**Subject:** FW: A New Sheriff's Department Building and Improvements at the Detention Center - Phase 2 (REBID 2) - REQUEST FOR PRICING #3

Jay:

Good morning. Just wanted to confirm you received this correspondence.

Thanks,

R. Lee Kittrell, LEED®-AP  
Flagstar Construction Company, Inc.  
2006 Aspen Cove - Brandon, MS 39042  
O: 601-824-4646 M: 601-209-7982  
[lee@flagstarconstruction.com](mailto:lee@flagstarconstruction.com)



**From:** Lee Kittrell  
**Sent:** Friday, August 16, 2024 10:51 AM  
**To:** Jay White <Jay@fireline-ms.com>  
**Subject:** FW: A New Sheriff's Department Building and Improvements at the Detention Center - Phase 2 (REBID 2) - REQUEST FOR PRICING #3

Jay:

I failed to send this to you previously. Please review and send me pricing as soon as possible.

**TRI-STAR COMPANIES, INC.**

---



P.O. BOX 1549 • 910 KEATING ROAD  
BATESVILLE, MS 38606  
662-578-4440 FAX 662-578-4447

August 6, 2024

TO: Flagstar Construction

ATTN: Lee Kittrell

RE: RFP-3

There would be no charge for Tri Star to change the L-2 lavatories, and the S-1&2 sinks to undermount sinks, if the countertop guy's mount the sinks, lavatories and drill the holes for the faucets. If this is to be done, we will need to know before the fixtures ship, which will be in September.

Thanks

David Hendrix PM

## Lee Kittrell

---

**From:** Brent Walker <bwalker@missco.com>  
**Sent:** Friday, August 9, 2024 1:20 PM  
**To:** Lee Kittrell  
**Cc:** Paul Waddell; Mike Parker; zeb Collums; dhendrix@tristarcompanies.com; Paul Rials  
**Subject:** Re: A New Sheriff's Department Building and Improvements at the Detention Center - Phase 2 (REBID 2) - REQUEST FOR PRICING #3

Lee,  
There will be no change in price for this request. Just to let you know, when we install the cabinets and our vendor comes out to template for the quartz, he will need (1) sink (of each size) to take with him to his shop for the cutouts and will bring it back when he delivers the tops to install them. Please confirm you received this and let me know if you have any questions.

Thanks,

*Brent Walker  
Project Manager  
Missco Interior Concepts*

---

**From:** Lee Kittrell <lee@flagstarconstruction.com>  
**Sent:** Wednesday, August 7, 2024 9:06 AM  
**To:** Brent Walker <bwalker@missco.com>  
**Cc:** Paul Waddell <paul@howortharch.com>; Mike Parker <mikeparker@flagstarconstruction.com>; zeb Collums <zeb@flagstarconstruction.com>; dhendrix@tristarcompanies.com <dhendrix@tristarcompanies.com>  
**Subject:** FW: A New Sheriff's Department Building and Improvements at the Detention Center - Phase 2 (REBID 2) - REQUEST FOR PRICING #3

Brent:

Good morning. Please review the attached and confirm that you are in agreement with installing the sinks to be provided by our mechanical subcontractor- should this change be approved by the owner.

Thanks,

**R. Lee Kittrell, LEED®-AP**  
**Flagstar Construction Company, Inc.**  
2006 Aspen Cove - Brandon, MS 39042  
O: 601-824-4646 M: 601-209-7982  
[lee@flagstarconstruction.com](mailto:lee@flagstarconstruction.com)





## PROFESSIONAL'S REQUEST FOR PRICING

---

**PROJECT:** A New Sheriff's Department Building and  
Improvements at the Detention Center— Phase 2 (Rebid 2)  
Lafayette County Board of Supervisors  
Oxford, Mississippi

**PROJECT NO:** 2020-30-2

**RFP NO. 3**

**DATE:** August 2, 2024

**PLEASE PROVIDE AN ITEMIZED PROPOSAL THAT INCLUDES THE FOLLOWING:**

Item No. 1 — Add Type 'B' fixtures, Type 'M' fixtures, Type 'N' fixtures, and occupancy sensors in Women's Restroom 128, Men's Restroom 129, Men's Restroom 218 and Women's Restroom 219 per revised Lighting Plans on attached Sheets E1.1 and E1.2, and on revised Light Fixture Schedule on attached Sheet E0.0. Ceiling grids, existing Type 'B' & 'BE' fixtures, HVAC supply air diffusers, and exhaust grilles have been reconfigured to accommodate layouts of privacy-type toilet compartments. Install per revised RCP's on attached Sheets A1.2 and A1.3.

Item No. 2 — Change all 'L-2' lavatories, 'S-1' sinks, and 'S-2' sink from drop-in to undermounted types indicated on attached cut sheets. Provide all necessary fittings, installation hardware, etc. required for complete installation.

*American Standard*

Style That Works Better

 BARRIER FREE

## L-2 UNDERCOUNTER SINK

OVALYN™  
VITREOUS CHINA

### OVALYN™ UNDERCOUNTER SINK

- Classic oval undermount sink
- Made from vitreous china
- Front overflow
- Supplied with mounting kit (047194-0070A) and template

☐ **0495.221 Unglazed rim**

435 x 359mm  
(17-1/8" x 14-1/8")

☐ **0495.300 Glazed underside**

**Bowl size:**

382mm (15-1/16") wide  
306mm (12-1/16") front to back  
140mm (5-1/2") deep

☐ **0496.221 Unglazed rim**

489 x 413mm  
(19-1/4" x 16-1/4")

☐ **0496.300 Glazed underside**

**Bowl size:**

432mm (17") wide  
356mm (14") front to back  
140mm (5-1/2") deep

☐ **0497.221 Unglazed rim**

546 x 441mm  
(21-1/2" x 17-3/8")

☐ **0497.300 Glazed underside**

**Bowl size:**

483mm (19") wide  
391mm (15-3/8") front to back  
140mm (5-1/2") deep

**Compliance Certifications -**

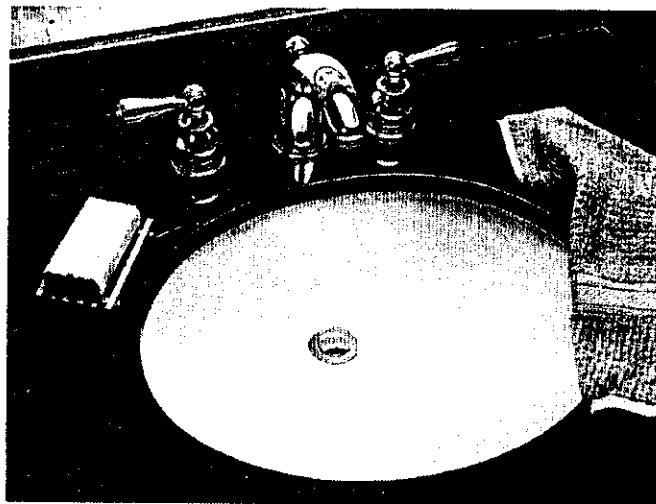
**Meets or Exceeds the Following Specifications:**

- ASME A112.19.2M for Vitreous China Fixtures
- CAN/CSA B45 series

**To Be Specified:**

- ☐ Color: ☒ White ☐ Bone ☐ Linen  
☐ Silver ☐ Fawn Beige ☐ Black
- ☐ Faucet\*:
- ☐ Faucet Finish:
- ☐ Supplies:
- ☐ 1-1/4" Trap:

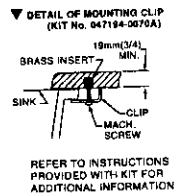
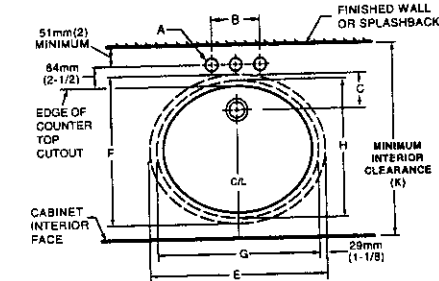
\* See faucet section for additional models available



SEE REVERSE FOR ROUGHING-IN DIMENSIONS



0496/0497

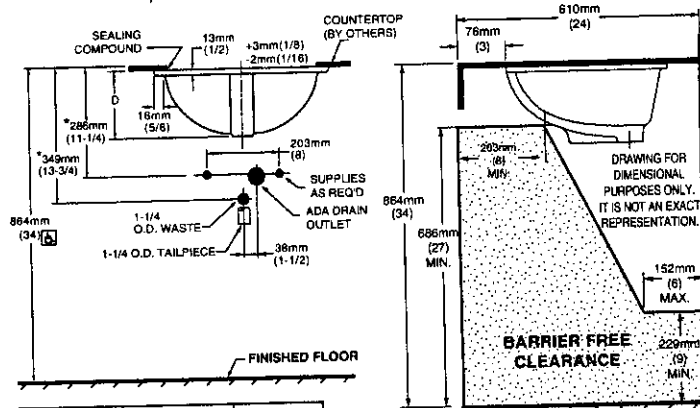


**NOTES:**

\* DIMENSIONS SHOWN FOR LOCATION OF SUPPLIED AND "P" TRAP ARE SUGGESTED.

▼ UNDERCOUNTER MOUNTING KIT SUPPLIED WITH SINK. PLEASE NOTE MINIMUM INTERIOR CLEARANCE DIMENSION (K). FITTINGS NOT INCLUDED AND MUST BE ORDERED SEPARATELY. USE ENCLOSED TEMPLATE FOR COUNTERTOP CUTOUT SEALING COMPOUND SUPPLIED BY OTHERS.

**IMPORTANT:** Dimensions of fixtures are nominal and may vary within the range of tolerances established by ANSI Standard A112.19.2. These measurements are subject to change or cancellation. No responsibility is assumed for use of superseded or voided pages.



FITTING	A	B
CENTERSET	1-1/4 (32mm)	4 (102mm)
SPREAD	1-3/8 (35mm)	8 (203mm)

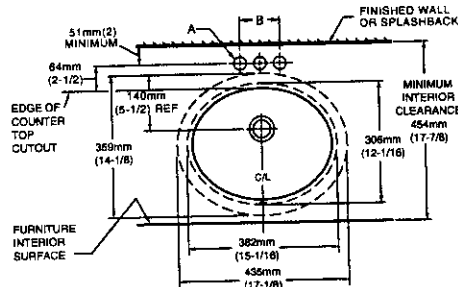
CAT. NO.	E	F	G	H	C	D	J	K
0496.221	489mm (19-1/4)	413mm (16-1/4)	432mm (17)	356mm (14)	103mm (4-1/16)	182mm (7-3/16)	18mm (5/8)	500mm (19-11/16)
0497.221	546mm (21-1/2)	441mm (17-3/8)	483mm (19)	391mm (15-3/8)	95mm (3-3/4)	191mm (7-1/2)	19mm (3/4)	534mm (21-1/16)



**MEETS THE AMERICANS WITH DISABILITIES ACT GUIDELINES AND ANSI A117.1 ACCESSIBLE AND USEABLE BUILDINGS AND FACILITIES - CHECK LOCAL CODES.**

Countertop 864mm (34") from finished floor. Lavatory installed 76mm (3") from front edge of countertop. Countertop thickness to be 25mm (1") maximum.

0495



FITTING	A	B
CENTERSET	1-1/4 (32mm)	4 (102mm)
SPREAD	1-3/8 (35mm)	8 (203mm)

**NOTES:**

USE ENCLOSED TEMPLATE FOR COUNTERTOP CUTOUT. FITTINGS NOT INCLUDED WITH FIXTURE AND MUST BE ORDERED SEPARATELY.

\* DIMENSIONS SHOWN FOR LOCATION OF SUPPLIED AND "P" TRAP ARE SUGGESTED.

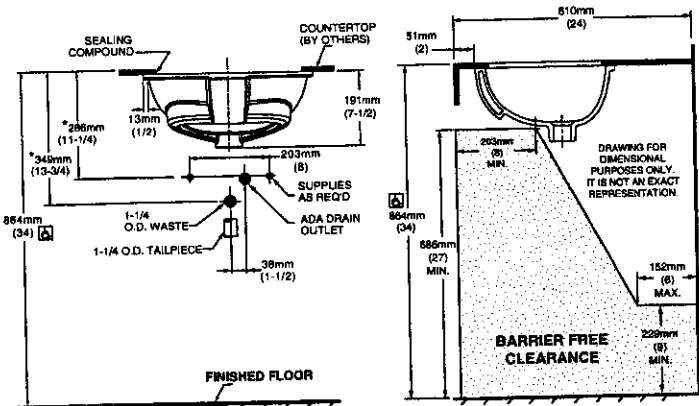
▼ UNDERCOUNTER MOUNTING KIT SUPPLIED WITH SINK. PLEASE NOTE MINIMUM INTERIOR CLEARANCE DIMENSION (K). SEALING COMPOUND SUPPLIED BY OTHERS.

**IMPORTANT:** Dimensions of fixtures are nominal and may vary within the range of tolerances established by ANSI Standard A112.19.2. These measurements are subject to change or cancellation. No responsibility is assumed for use of superseded or voided pages



**MEETS THE AMERICANS WITH DISABILITIES ACT GUIDELINES AND ANSI A117.1 ACCESSIBLE AND USABLE BUILDINGS AND FACILITIES - CHECK LOCAL CODES.**

Countertop 864mm (34") from finished floor. Lavatory installed 51mm (2") from front edge of countertop. Countertop thickness to be 25mm (1") maximum.



# KOHLER®

## **S-1** Undermount double-equal kitchen sink **Buckley™** **K-28900**

### Features

- 36" (914 mm) minimum base cabinet width.
- Double-equal bowls.
- 9" (229 mm) depth provides generous workspace.
- Rounded corners are easy to clean.
- SilentShield® sound-absorption technology offers quieter performance.
- Rear drains increase workspace in the sink and storage space underneath.
- No faucet holes; requires wall- or counter-mount faucet.
- Box includes: Sink, installation hardware.
- Optional K-28903 silicone bowl mat (sold separately).

### Material

- Premium 18-gauge stainless steel.
- KOHLER stainless steel sinks resist corrosion and tarnishing.

### Installation

- Undermount.

### Recommended Products/Accessories

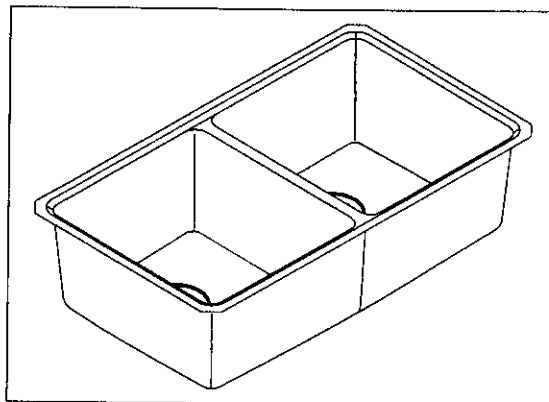
K-28903 Silicone sink mat  
K-8801 Sink drain and strainer with tailpiece  
K-23729 Stainless steel cleaner  
K-8799 Sink drain and strainer basket  
K-23726 Drain treatment

### Optional Products/Accessories

K-28905 Bamboo cutting board  
K-28906  
K-11352 Disposal Flange with Stopper

### Included Components

Additional Components:  
Installation hardware



### Codes/Standards

ASME A112.19.3/CSA B45.4

### KOHLER® Stainless Steel Sinks Lifetime Limited Warranty

See website for detailed warranty information.

1-800-4KOHLER (1-800-456-4537)

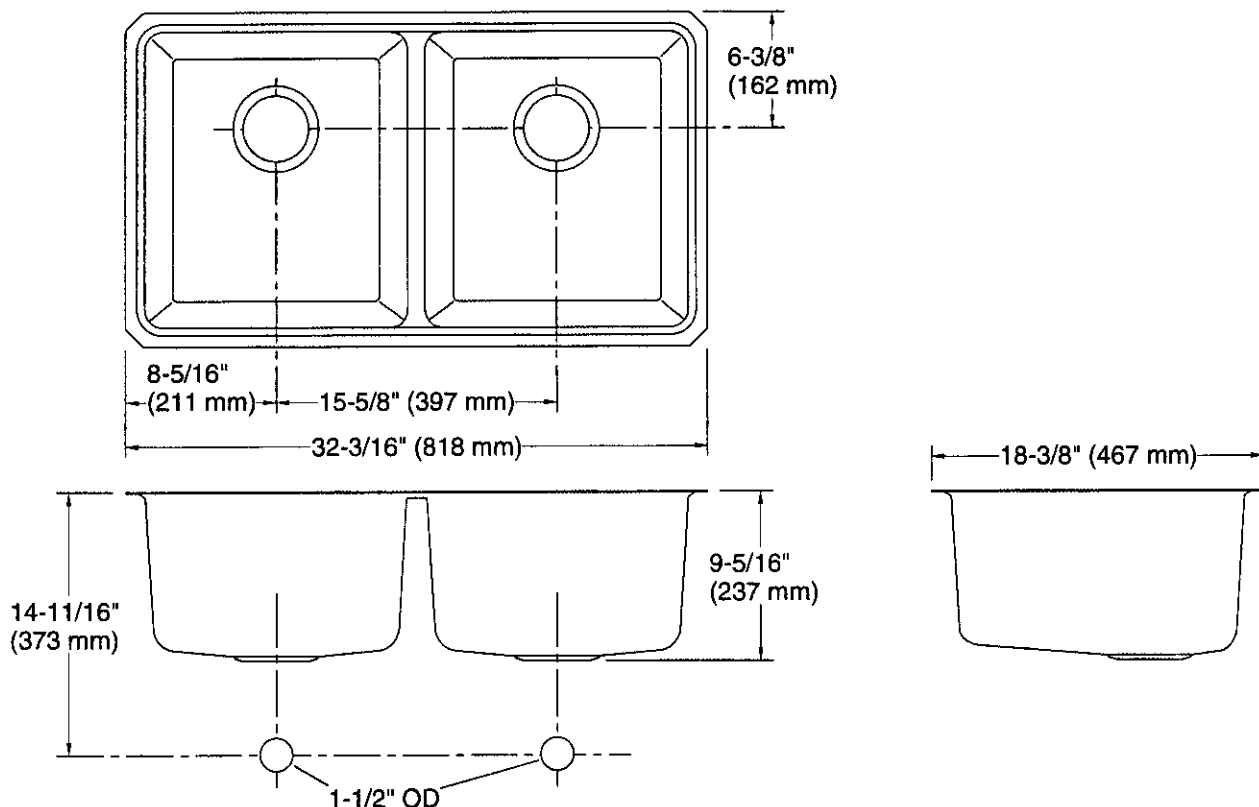
Kohler Co. reserves the right to make revisions without notice to product specifications.  
For the most current Specification Sheet, go to [www.kohler.com](http://www.kohler.com).

5-20-2022 10:31 - US/CA

THE BOLD LOOK  
OF **KOHLER.**

# KOHLER®

## Buckley™ Undermount double-equal kitchen sink K-28900



### Technical Information

All product dimensions are nominal.

Bowl configuration: Double equal

Installation: Undermount

Min. base cabinet  
width: 36" (914 mm)

Bowl area (Left): Length: 14-3/8" (365 mm)  
Width: 16-1/8" (410 mm)  
Bowl depth: 9" (229 mm)  
Water depth: 9" (229 mm)

Bowl area (Right): Length: 14-3/8" (365 mm)  
Width: 16-1/8" (410 mm)  
Bowl depth: 9" (229 mm)  
Water depth: 9" (229 mm)

Drain hole: 3-5/8" (92 mm)

Template: Undermount, 1476436-7, required,  
included

### Notes

Install this product according to the installation  
instructions.

1-800-4KOHLER (1-800-456-4537)

Kohler Co. reserves the right to make revisions without notice to product specifications.  
For the most current Specification Sheet, go to [www.kohler.com](http://www.kohler.com).

5-20-2022 10:31 - US/CA

THE BOLD LOOK  
OF **KOHLER**

# KOHLER®

## **S-2** Undertone® Undermount bar sink K-3331

### Features

- 21" (533 mm) minimum base cabinet width.
- Single bowl.
- 7-1/2" (191 mm) depth.
- Rear drain placement increases vanity cabinet storage space underneath sink.
- Includes installation hardware.

### Material

- Premium 18-gauge stainless steel.

### Installation

- Undermount.

### Recommended Products/Accessories

K-6388 Sink Rack  
K-8801 Sink drain and strainer with tailpiece  
K-8799 Sink drain and strainer basket  
K-23726 Drain treatment  
K-23729 Stainless steel cleaner

### Optional Products/Accessories

K-11352 Disposal Flange with Stopper

### Included Components

Additional Components:  
91915



ADA

### Codes/Standards

ASME A112.19.3/CSA B45.4  
ADA  
ICC/ANSI A117.1

### KOHLER® Stainless Steel Sinks Lifetime Limited Warranty

See website for detailed warranty information.

1-800-4KOHLER (1-800-456-4537)

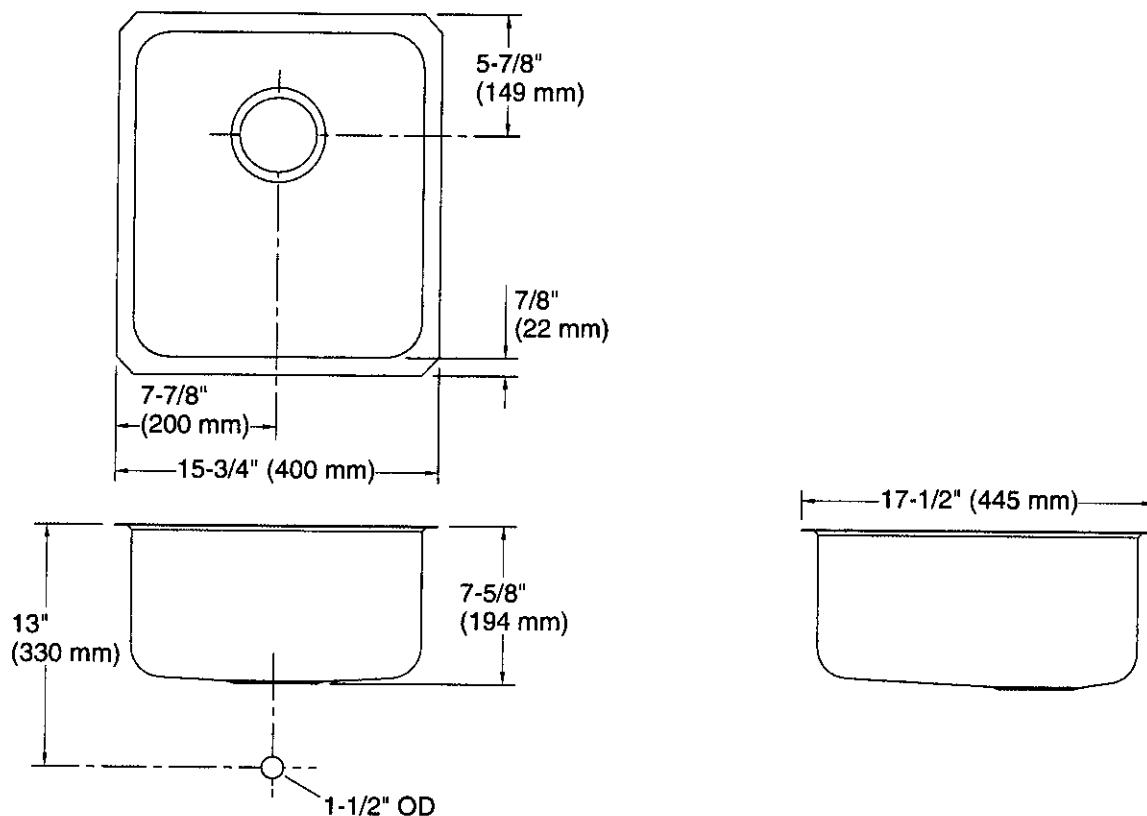
Kohler Co. reserves the right to make revisions without notice to product specifications.  
For the most current Specification Sheet, go to [www.kohler.com](http://www.kohler.com).

11-30-2022 01:36 - US/CA

THE BOLD LOOK  
OF **KOHLER®**

# KOHLER®

**Undertone®**  
Undermount bar sink  
**K-3331**



## Technical Information

All product dimensions are nominal.

Installation: Undermount

Min. base cabinet width: 21" (533 mm)

Bowl area (Only): Length: 14" (356 mm)  
Width: 15-3/4" (400 mm)  
Bowl depth: 7-1/2" (191 mm)  
Water depth: 7-1/2" (191 mm)

Drain hole: 3-5/8" (92 mm)

Template: 111134-7, required, included

## Notes

Install this product according to the installation instructions.

ADA compliant when installed to the specific requirements of these regulations.

ADA permits a parallel approach to wet bars.

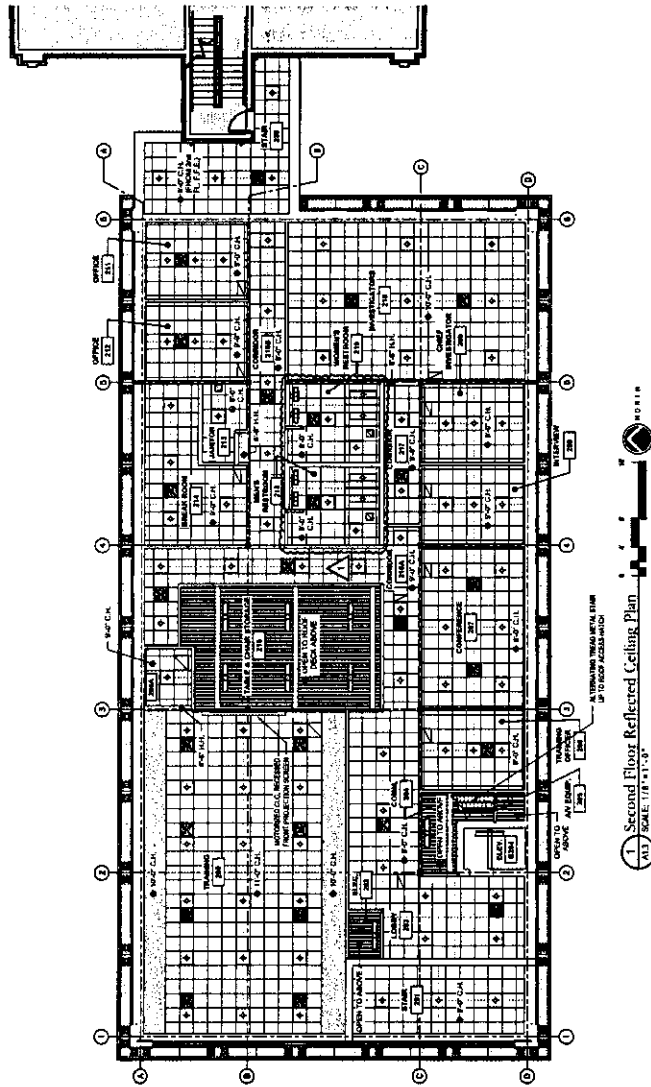
1-800-4KOHLER (1-800-456-4537)

Kohler Co. reserves the right to make revisions without notice to product specifications.  
For the most current Specification Sheet, go to [www.kohler.com](http://www.kohler.com).

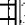
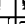










11-30-2022 01:36 - US/CA

THE BOLD LOOK  
OF **KOHLER**®

1. REFERS TO PAPER RECORDS AND SPECIFICATIONS FOR GAMES OF JOSEPH CHENG (1960-68).
2. REFER TO PERMANENT RECORDS AND RECORDS FOR BIRTH, TYPE AND LOCATION OF BIRTH.
3. REFER TO BIRTH, INMATES AND RECORDS FOR BIRTH, TYPE AND LOCATION OF BIRTH.



## 1 Second Floor Reflected Ceiling Plan

CEILING LEGEND	
	NEW 2'x4'x1" ACOUSTICAL PANEL CEILING
	NEW 2'x4'x1" PAINTED SURFACE (NO COATING SUPPLY ON LINE DRAWING)
	NOOP OR ATT'D ACCESS HATCH
	NEW 3'x3'x1" PANEL LIGHT FIXTURE
	NEW SURFACE MTD. LINER LIGHT FIXTURE
	NEW SURFACED LINER LIGHT FIXTURE
	NEW PAUL. LTD. LINER LIGHT FIXTURE
	RECESSED CAN LIGHT FIXTURE
	NEW SURFACE LTD. LIGHT FIXTURE
	NEW 4'x4'x1" SURF. MTD. LIGHT FIXTURE (E.L.S.)
	NEW 4'x4'x1" SURF. MTD. LTD. (E.L.P.M. C.O.)
	NEW 4'x4'x1" SURF. MTD. (E.L.P.M. C.O.)

### GENERAL NOTES:

1. REFER TO PUNCH SCHEDULE AND SPECIFICATIONS FOR PUNCH-ON-DEMAND CEILING FEATURES.
2. REFER TO MECHANICAL DRAWINGS AND SCHEDULES FOR SPECIFIC TYPES AND LOCATIONS OF WALLS, PARTITIONS, CEILING CABS/STIES, AND FANS.
3. REFER TO ELECTRICAL DRAWINGS AND SCHEDULES FOR SPECIFIC TYPES AND LOCATIONS OF LIGHT FIXTURES AND CEILING MOUNTED SOUND DEVICES.

[illegible]

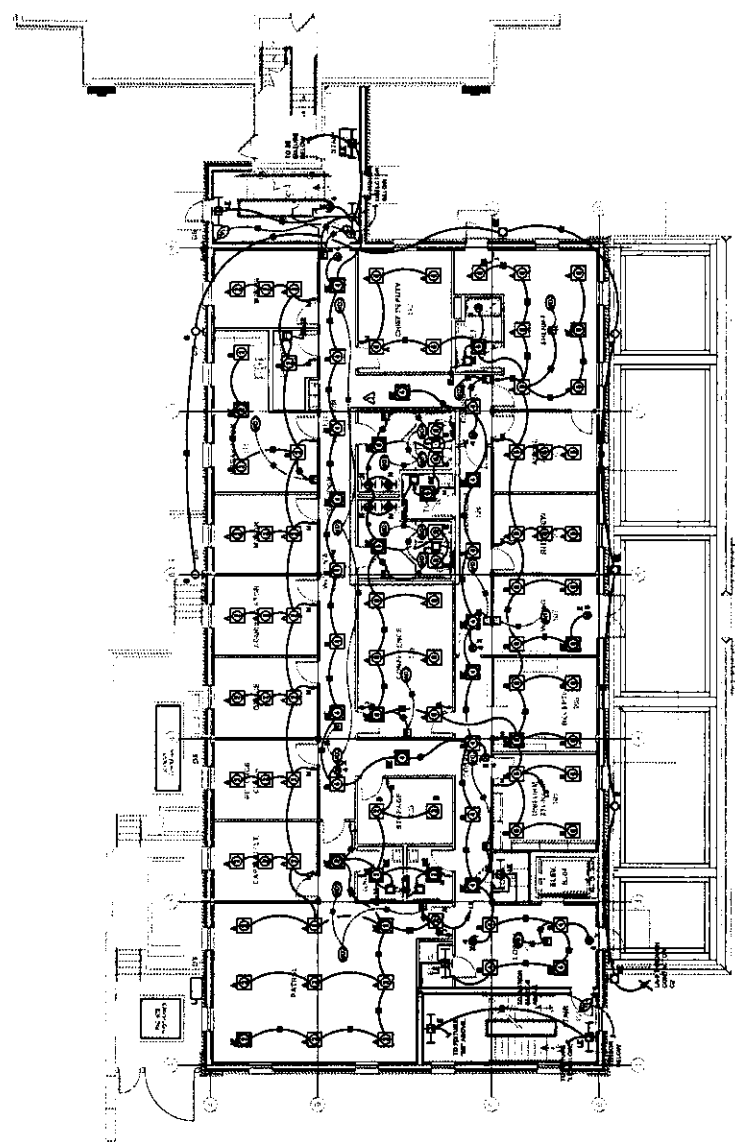
A New Sheriff's Department Building and  
Improvements at the Detention Center- Phase 2 (Rebid 2)  
JACKSON AVENUE EAST  
OXFORD, MISSISSIPPI 38655



CONSTRUCTION DOCUMENTS  
DATE: 10/1/2010  
PROJECT NO.: 10000-002



**HWA**  
HOWARTH & ASSOCIATES  
ARCHITECTS  
PO Box 1509 • Oxford, Mississippi 38655 • 662.232.9448 • www.howarthwa.com



**1.1 LIGHTING PLAN - GROUND FLOOR**  
Scale: 1/8" = 1'-0"

E1.2

SHEET NUMBER

SECOND FLOOR

DATE

PROJECT NAME

A New Sheriff's Department Building and  
Improvements at the DeLeon Center- Phase 2 (Rebid 2)  
JACKSON AVENUE EAST  
OXFORD, MISSISSIPPI 38655



P. N. 2020-20-2

CONSTRUCTION DOCUMENTS

DATE: 10/1/2010

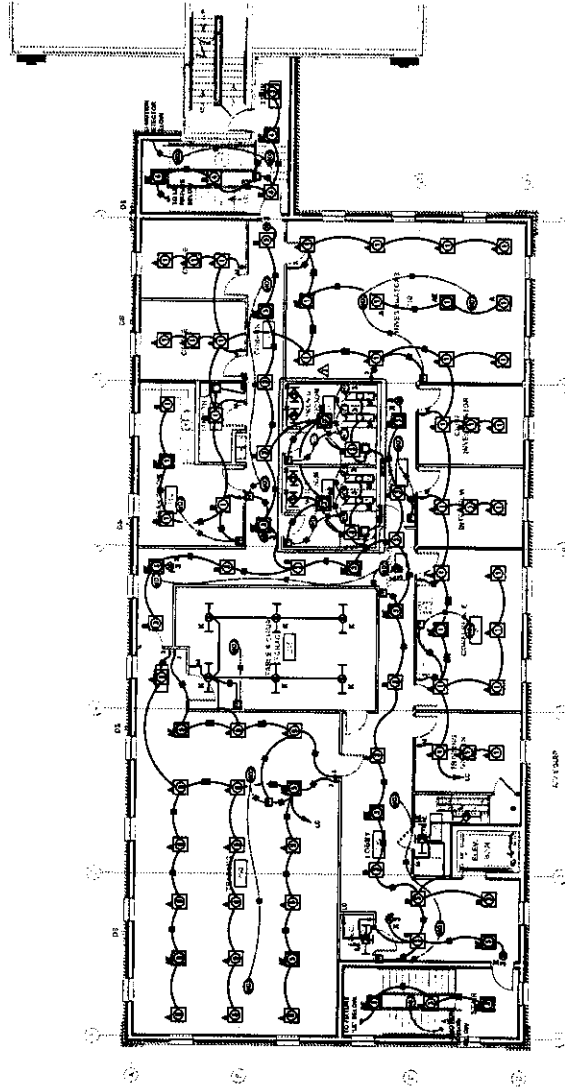
PROJECT: 2020-20-2

DATE: 10/1/2010

PROJECT: 2020-20-2



**HWA**  
HOWORTH & ASSOCIATES  
ARCHITECTS  
PO Box 1549 • Oxford, Mississippi 38655 • 662.234.7444 • www.howorth.com



**LIGHTING PLAN - SECOND FLOOR**  
Scale: 1/8" = 1'-0"