

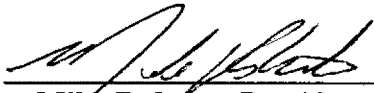
**ORDER: APPROVE CONDITIONAL USE PERMIT TO INSTALL A  
MANUFACTURED HOME IN A COMMERCIAL MEDIUM  
DENSITY (C-2) DISTRICT ON LAFAYETTE COUNTY  
PARCEL 132-09-066**

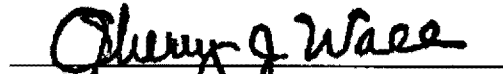
Motion was made by Larry Gillespie, duly seconded by Brent Larson, to approve a conditional use permit to install a manufactured home in a Commercial Medium Density (C-2) District on Lafayette Co. Parcel 132-09-066.

The vote on the motion was as follows:

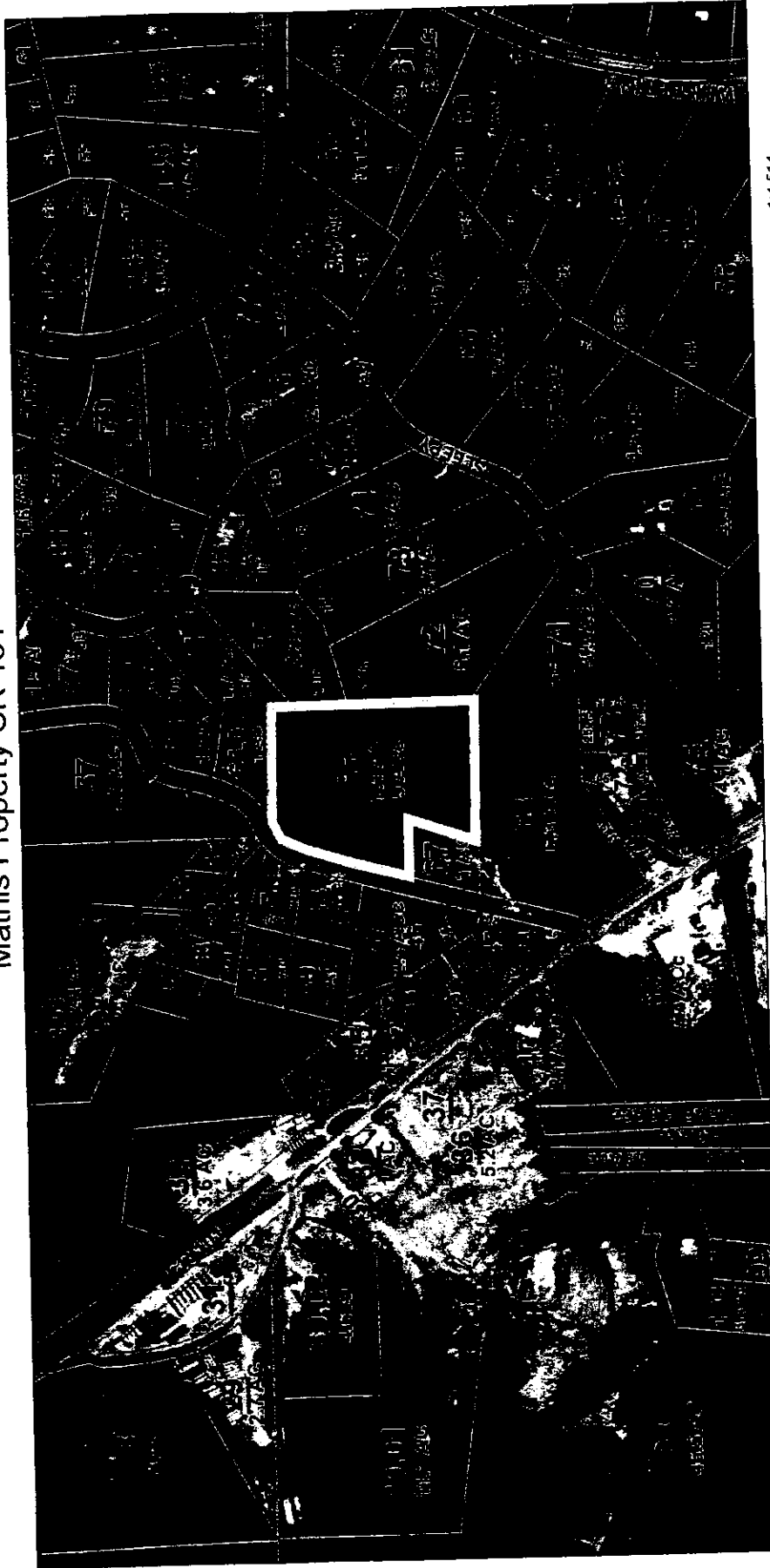
Supervisor Brent Larson, voted yes  
Supervisor Larry Gillespie, voted yes  
Supervisor David Rikard, voted yes  
Supervisor Chad McLarty, voted yes  
Supervisor Mike Roberts, voted yes

After the vote, President Roberts, declared the motion carried, this the 20<sup>th</sup> day of September, 2021.

  
\_\_\_\_\_  
**Mike Roberts, President  
Board of Supervisors**

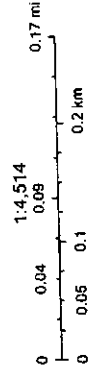
  
\_\_\_\_\_  
**Sherry Wall, Chancery Clerk**

# Mathis Property CR 181



8/19/2021, 8:58:36 AM

- LandHook
- Leader
- SectionLine
- Parcels
- Imagery2019



Esri, HERE, Garmin, INCREMENT P, USGS, EPA, Esri, HERE, Garmin, (c) OpenStreetMap contributors, and the GIS user community

Esri, HERE, Garmin, INCREMENT P, USGS, EPA | Esri, HERE, Garmin, INCREMENT P, NGA, USGS | GIS