

**At this time Janis and Donald Kisner questioned the Old Oaks Phase Eight project and expressed some potential concerns they have with the development. Joel Hollowell assured the Kisners that he would address the problems with the developers**

\*\*\*\*\*

**ORDER: APPROVE PLANNING COMMISSION'S RECOMMENDATION TO APPROVE THE OLD OAKS PHASE EIGHT PRELIMINARY SUBDIVISION PLAT**

Motion was made by Larry Gillespie, duly seconded by Brent Larson, to approve Planning Commission's recommendation to approve The Old Oaks Phase 8 preliminary subdivision plat.

The vote on the motion was as follows:

Supervisor Brent Larson, voted yes  
Supervisor Larry Gillespie, voted yes  
Supervisor David Rikard, voted nay  
Supervisor Chad McLarty, voted yes  
Supervisor Mike Roberts, voted yes

After the vote, Vice President McLarty, declared the motion carried, this the 3<sup>rd</sup> day of May, 2021.

---

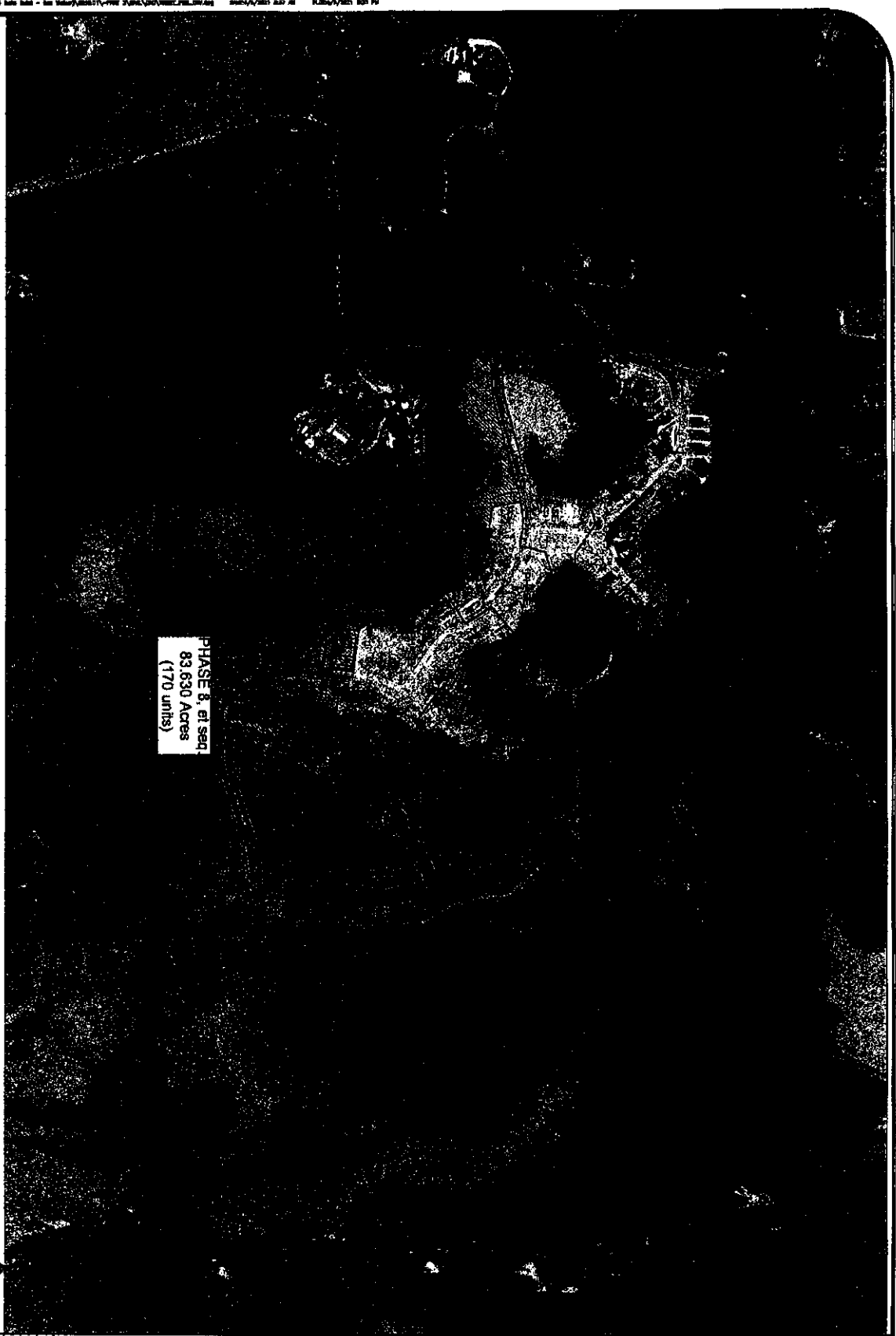
**Chad McLarty, Vice President  
Board of Supervisors**

---

**Sherry Wall, Chancery Clerk**



1 AERIAL IMAGERY



PHASE 8, at seq  
83,630 Acres  
(170 units)



DATE	BY	DESCRIPTION

**AERIAL IMAGERY**  
FOR  
**OLD OAKS of OXFORD - PART 3**  
(an OLD OAKS OXFORD, LLC development)

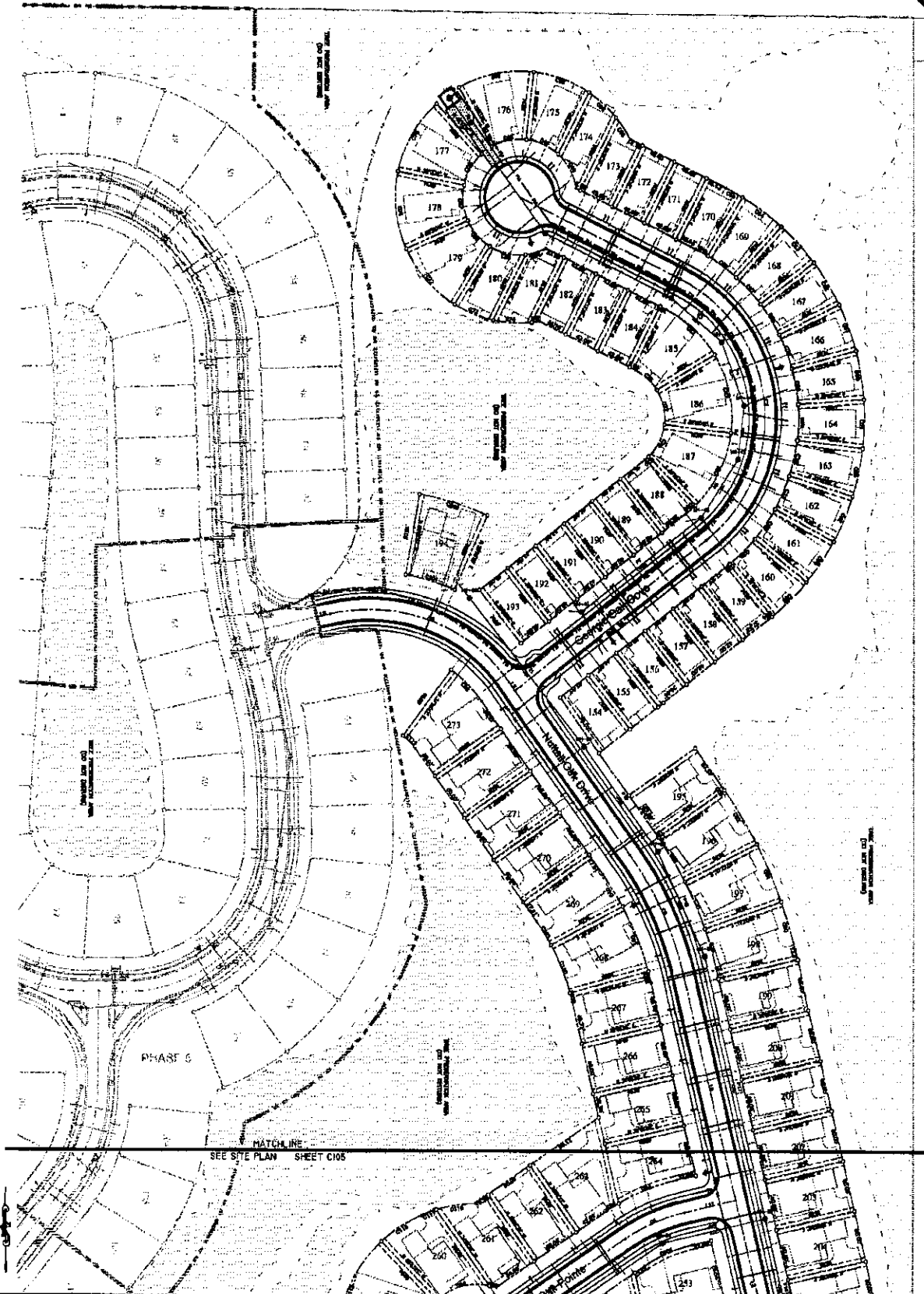
PERMITS/BID SET  
NOT FOR  
CONSTRUCTION

NO.	DATE	REVISIONS:



C101

1 SITE LAYOUT



### SITE PLAN

FOR  
**OLD OAKS of OXFORD - PART 3**  
 (an OLD OAKS OXFORD, LLC development)

PERMIT/BID SET  
 NOT FOR  
 CONSTRUCTION



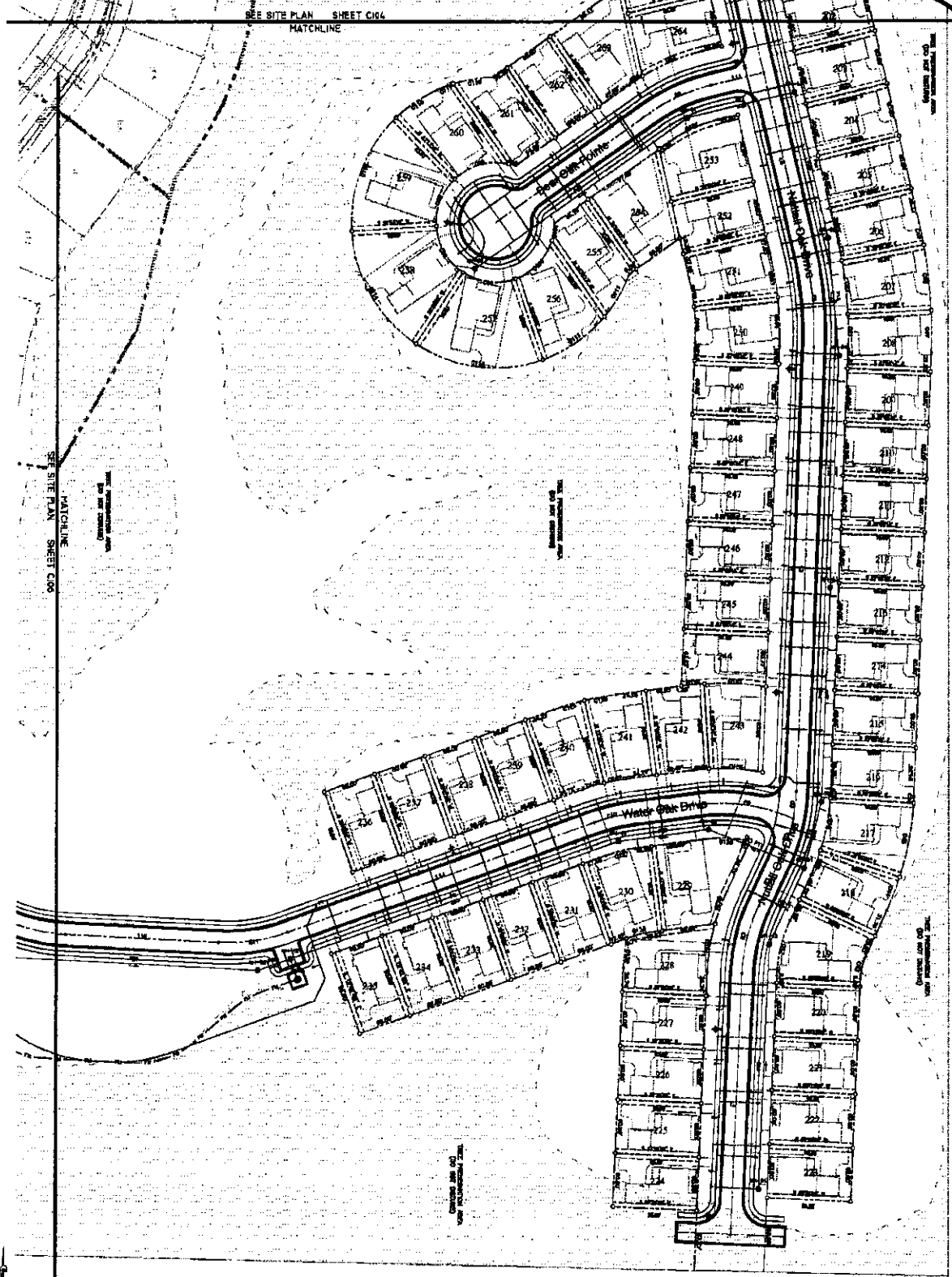
#### REVISIONS:

NO.	DATE	DESCRIPTION

NO.	DATE	DESCRIPTION

C104

1 SITE LAYOUT  
SHEET 7 OF 10



**C105**

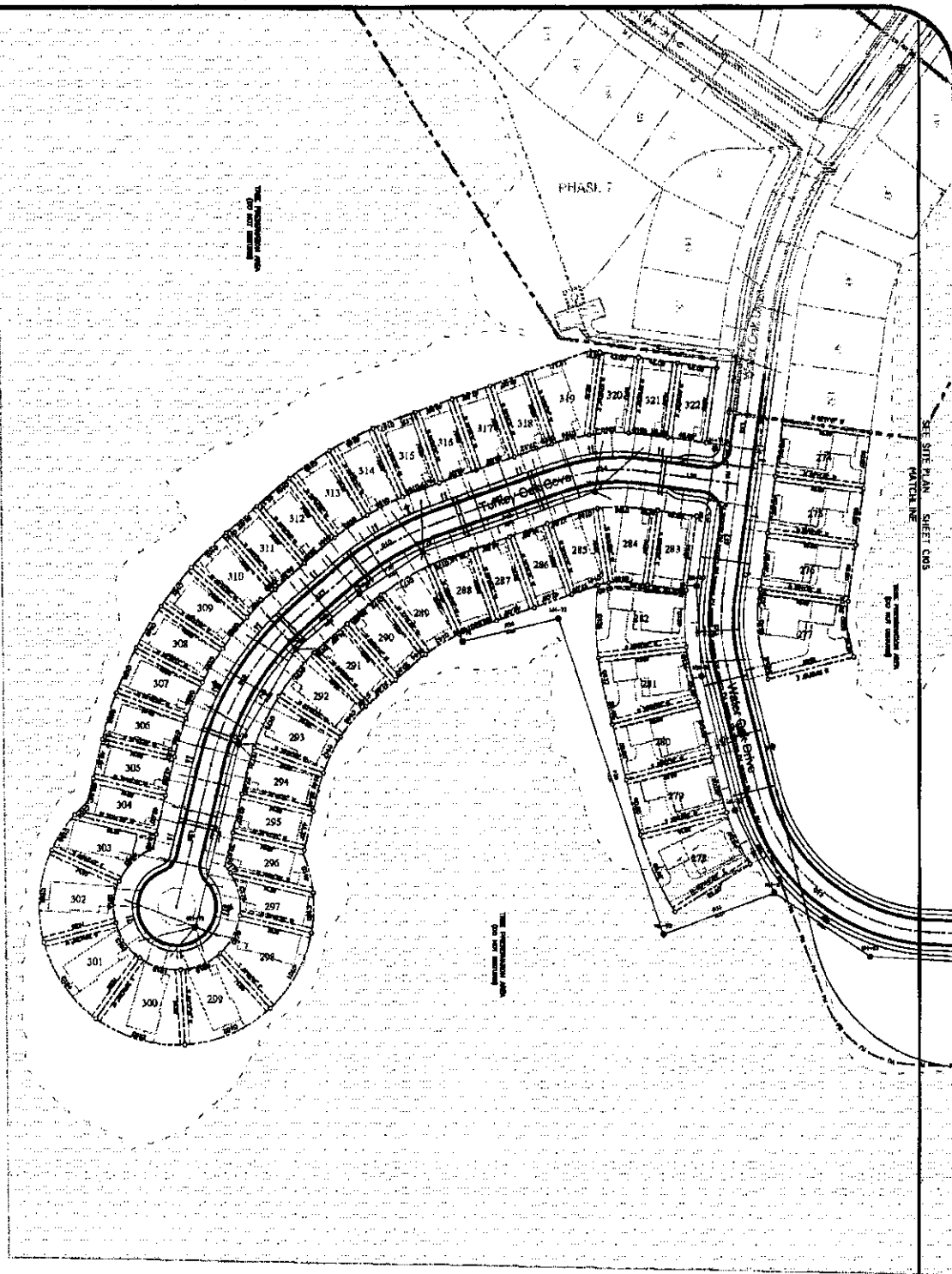
**SITE PLAN**  
FOR  
**OLD OAKS of OXFORD - PART 3**  
(an OLD OAKS OXFORD, LLC development)

PERMIT/BIID SET  
NOT FOR  
CONSTRUCTION

NO.	DATE	REVISIONS:



1 SITE LAYOUT



DATE	BY	REVISION

**SITE PLAN**  
 FOR  
**OLD OAKS of OXFORD - PART 3**  
 (an OLD OAKS OXFORD, LLC development)

NO.	DATE	REVISIONS

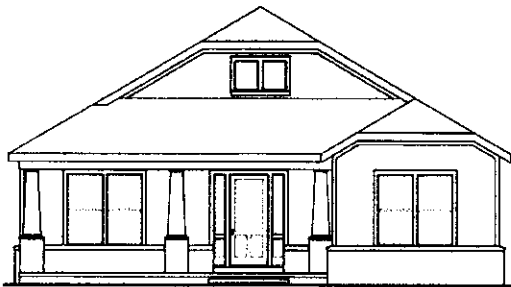


PERMIT/BID SET  
 NOT FOR  
 CONSTRUCTION

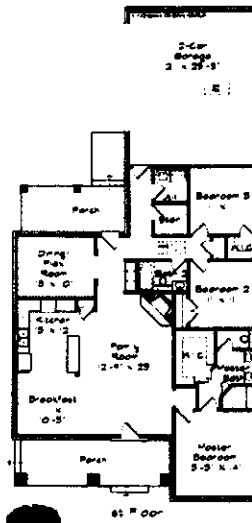
C106



❁ CHESTNUT (A) ❁



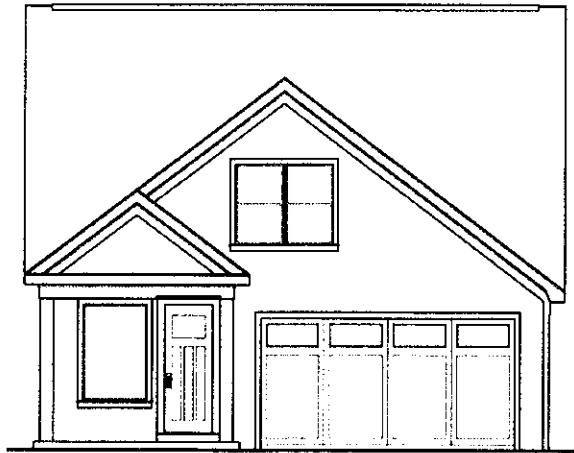
❁ CHESTNUT (A) ❁



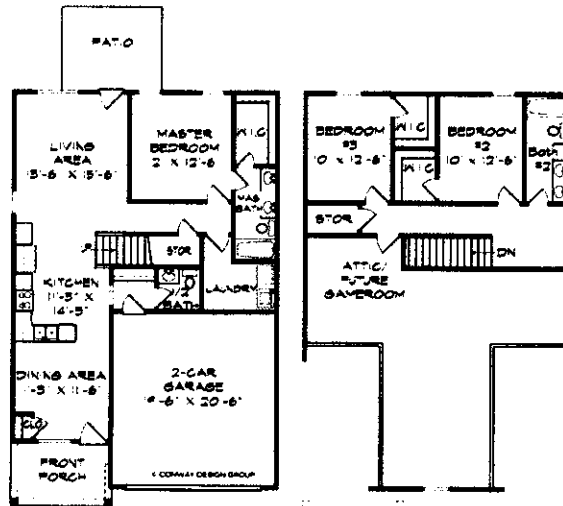
AREA CALCULATIONS	
HEATED 1ST FLOOR	1,743 sqft
HEATED 2ND FLOOR	0 sqft
TOTAL HEATED	1,743 sqft

VISIT [www.oldoakssoxford.com](http://www.oldoakssoxford.com) for additional information.

❁ BEECH ❁



❁ BEECH ❁



AREA CALCULATIONS	
HEATED 1ST FLOOR	1,006 sqft
HEATED 2ND FLOOR	622 sqft
<b>TOTAL HEATED</b>	<b>1,627 sqft</b>
covered porch	66 sqft
Garage	418 sqft
Green Storage	2,182 sqft
This floor carries 1st, 2nd, 3rd & 4th floors	

VISIT [www.oldoakssoxford.com](http://www.oldoakssoxford.com) for additional information.