

**ORDER: APPROVE PLANNING COMMISSION RECOMMENDATION TO
APPROVE OAKMONT PHASE 3 FINAL SUBDIVISION PLAT, BUT HOLDING COD
UNTIL FINAL APPROVAL OF RETENTION PONDS**

Motion was made by Larry Gillespie, duly seconded by Chad McLarty, to approve Planning Commission recommendation to approve Oakmont Phase 3 final subdivision plat, but holding COD until final approval of retention ponds.

The vote on the motion was as follows:

Supervisor Brent Larson, voted yes
Supervisor Larry Gillespie, voted yes
Supervisor David Rikard, voted yes
Supervisor Chad McLarty, voted yes
Supervisor Mike Roberts, voted yes

After the vote, President Roberts, declared the motion carried, this the 5th day of April, 2021.



**Mike Roberts, President
Board of Supervisors**



Sherry Wal, Chancery Clerk

The Lafayette County Planning Commission Recommends preliminary approval for Oakmont phase 3 with the following requirements:

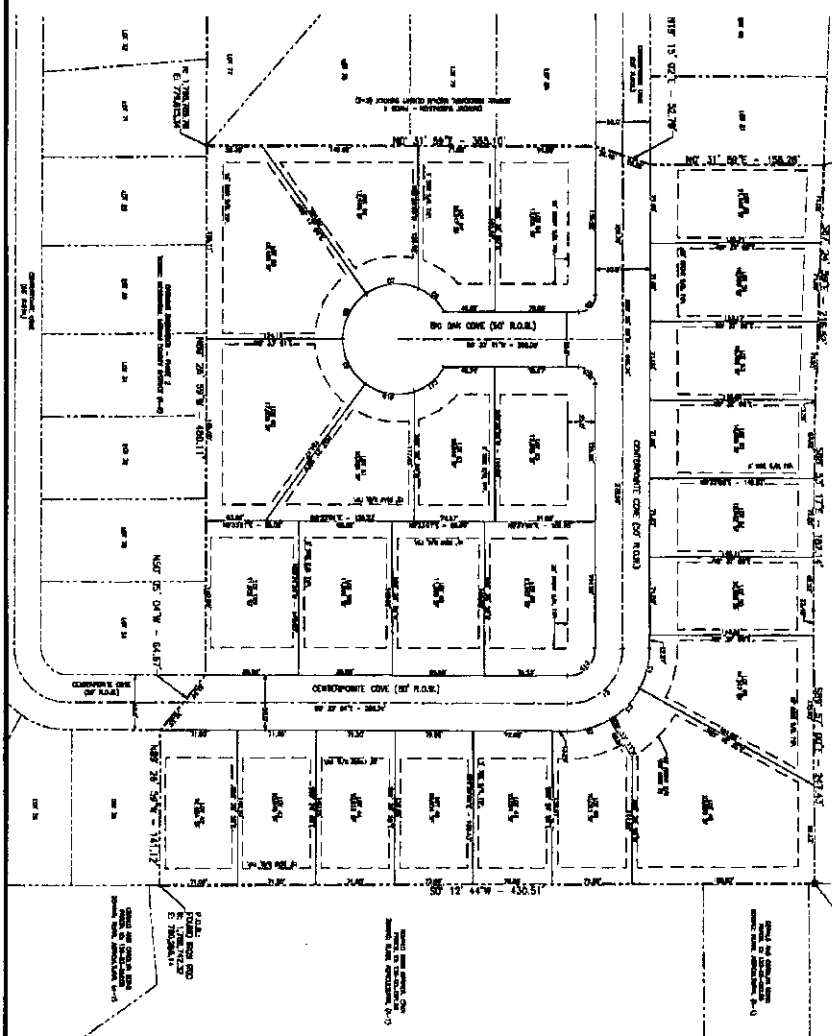
- a. The developers engineer must provide Larry Britt with elevations for the stilling basin design for the detention pond discharge.
- b. The developers engineer must add concrete post at the stilling basin discharge point, for the Bakers fence, as a feature of the design.
- c. The developers engineer must provide Larry Britt with a design to correct issues with the Northpointe pond discharge system.
- d. Mr. Britt must approve of both designs.
- e. The developer must provide Lafayette County with a bond, in addition to the regularly required infrastructure bond, to complete the work on the stilling basin and Northpointe pond discharge system.
- f. There must be simultaneous construction of the stilling basin and Northpointe pond discharge system along with construction of the two subdivision phases.
- g. No certificates of occupancy may be released for either phase until the work on the stilling basin and Northpointe pond discharge system has been completed.
- h. Upon completion of the stilling basin and Northpointe pond discharge system, there will be a joint inspection with the developers engineer, the Lafayette County Engineer and the Lafayette County Planning staff. If the work has been completed accorded to design, Lafayette County will release the stilling basin and Northpointe pond discharge system bond in exchange for a 1 year maintenance bond on these structures.

NOTES

1. ALL LOTS AND ROAD RIGHT-OF-WAY ARE TO BE 15 FEET WIDE UNLESS OTHERWISE NOTED.
2. ALL LOTS SHALL BE 15 FEET WIDE UNLESS OTHERWISE NOTED.
3. LOTS SHALL BE 15 FEET WIDE UNLESS OTHERWISE NOTED.
4. LOTS SHALL BE 15 FEET WIDE UNLESS OTHERWISE NOTED.
5. LOTS SHALL BE 15 FEET WIDE UNLESS OTHERWISE NOTED.
6. LOTS SHALL BE 15 FEET WIDE UNLESS OTHERWISE NOTED.
7. LOTS SHALL BE 15 FEET WIDE UNLESS OTHERWISE NOTED.
8. LOTS SHALL BE 15 FEET WIDE UNLESS OTHERWISE NOTED.
9. LOTS SHALL BE 15 FEET WIDE UNLESS OTHERWISE NOTED.
10. LOTS SHALL BE 15 FEET WIDE UNLESS OTHERWISE NOTED.
11. LOTS SHALL BE 15 FEET WIDE UNLESS OTHERWISE NOTED.
12. LOTS SHALL BE 15 FEET WIDE UNLESS OTHERWISE NOTED.
13. LOTS SHALL BE 15 FEET WIDE UNLESS OTHERWISE NOTED.
14. LOTS SHALL BE 15 FEET WIDE UNLESS OTHERWISE NOTED.
15. LOTS SHALL BE 15 FEET WIDE UNLESS OTHERWISE NOTED.

STANDARD DATA SHEET	DEVELOPMENT DATA SHEET
PROJECT NAME	DEVELOPMENT DATA SHEET
LOCATION OF PROJECT	DEVELOPMENT DATA SHEET
OWNER	DEVELOPMENT DATA SHEET
DESIGNER	DEVELOPMENT DATA SHEET
DATE	DEVELOPMENT DATA SHEET
PROJECT NO.	DEVELOPMENT DATA SHEET
LOT NO.	DEVELOPMENT DATA SHEET
LOT AREA	DEVELOPMENT DATA SHEET
LOT DIMENSIONS	DEVELOPMENT DATA SHEET
LOT COORDINATES	DEVELOPMENT DATA SHEET
LOT ELEVATION	DEVELOPMENT DATA SHEET
LOT ZONING	DEVELOPMENT DATA SHEET
LOT STATUS	DEVELOPMENT DATA SHEET
LOT NOTES	DEVELOPMENT DATA SHEET

PROJECT NAME	DEVELOPMENT DATA SHEET
LOCATION OF PROJECT	DEVELOPMENT DATA SHEET
OWNER	DEVELOPMENT DATA SHEET
DESIGNER	DEVELOPMENT DATA SHEET
DATE	DEVELOPMENT DATA SHEET
PROJECT NO.	DEVELOPMENT DATA SHEET
LOT NO.	DEVELOPMENT DATA SHEET
LOT AREA	DEVELOPMENT DATA SHEET
LOT DIMENSIONS	DEVELOPMENT DATA SHEET
LOT COORDINATES	DEVELOPMENT DATA SHEET
LOT ELEVATION	DEVELOPMENT DATA SHEET
LOT ZONING	DEVELOPMENT DATA SHEET
LOT STATUS	DEVELOPMENT DATA SHEET
LOT NOTES	DEVELOPMENT DATA SHEET



LEGEND

1	LOT LINE
2	LOT AREA
3	LOT DIMENSIONS
4	LOT COORDINATES
5	LOT ELEVATION
6	LOT ZONING
7	LOT STATUS
8	LOT NOTES



LOT NO.	LOT AREA	LOT DIMENSIONS	LOT COORDINATES	LOT ELEVATION	LOT ZONING	LOT STATUS	LOT NOTES
1	10,000	100' x 100'	100' 0" 0" 0" 0"	100' 0" 0" 0" 0"	100' 0" 0" 0" 0"	100' 0" 0" 0" 0"	100' 0" 0" 0" 0"
2	10,000	100' x 100'	100' 0" 0" 0" 0"	100' 0" 0" 0" 0"	100' 0" 0" 0" 0"	100' 0" 0" 0" 0"	100' 0" 0" 0" 0"
3	10,000	100' x 100'	100' 0" 0" 0" 0"	100' 0" 0" 0" 0"	100' 0" 0" 0" 0"	100' 0" 0" 0" 0"	100' 0" 0" 0" 0"
4	10,000	100' x 100'	100' 0" 0" 0" 0"	100' 0" 0" 0" 0"	100' 0" 0" 0" 0"	100' 0" 0" 0" 0"	100' 0" 0" 0" 0"
5	10,000	100' x 100'	100' 0" 0" 0" 0"	100' 0" 0" 0" 0"	100' 0" 0" 0" 0"	100' 0" 0" 0" 0"	100' 0" 0" 0" 0"
6	10,000	100' x 100'	100' 0" 0" 0" 0"	100' 0" 0" 0" 0"	100' 0" 0" 0" 0"	100' 0" 0" 0" 0"	100' 0" 0" 0" 0"
7	10,000	100' x 100'	100' 0" 0" 0" 0"	100' 0" 0" 0" 0"	100' 0" 0" 0" 0"	100' 0" 0" 0" 0"	100' 0" 0" 0" 0"
8	10,000	100' x 100'	100' 0" 0" 0" 0"	100' 0" 0" 0" 0"	100' 0" 0" 0" 0"	100' 0" 0" 0" 0"	100' 0" 0" 0" 0"
9	10,000	100' x 100'	100' 0" 0" 0" 0"	100' 0" 0" 0" 0"	100' 0" 0" 0" 0"	100' 0" 0" 0" 0"	100' 0" 0" 0" 0"
10	10,000	100' x 100'	100' 0" 0" 0" 0"	100' 0" 0" 0" 0"	100' 0" 0" 0" 0"	100' 0" 0" 0" 0"	100' 0" 0" 0" 0"

