

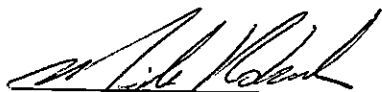
**ORDER: APPROVE A CONDITIONAL USE PERMIT FOR A USED CAR LOT (A
COMMERCIAL HIGH DENSITY C-3 USE) IN AN A-1 DISTRICT ON LAFAYETTE
COUNTY PARCEL 057-36-017**

Motion was made by Chad McLarty, duly seconded by Larry Gillespie, to approve a conditional use permit for a used car lot (a Commercial High Density C-3 use) in an A-1 District on Lafayette County parcel 057-36-017.


The vote on the motion was as follows:

Supervisor Brent Larson, voted yes
Supervisor Larry Gillespie, voted yes
Supervisor David Rikard, voted yes
Supervisor Chad McLarty, voted yes
Supervisor Mike Roberts, voted yes

After the vote, President Roberts, declared the motion carried, this the 19th day of January, 2021.

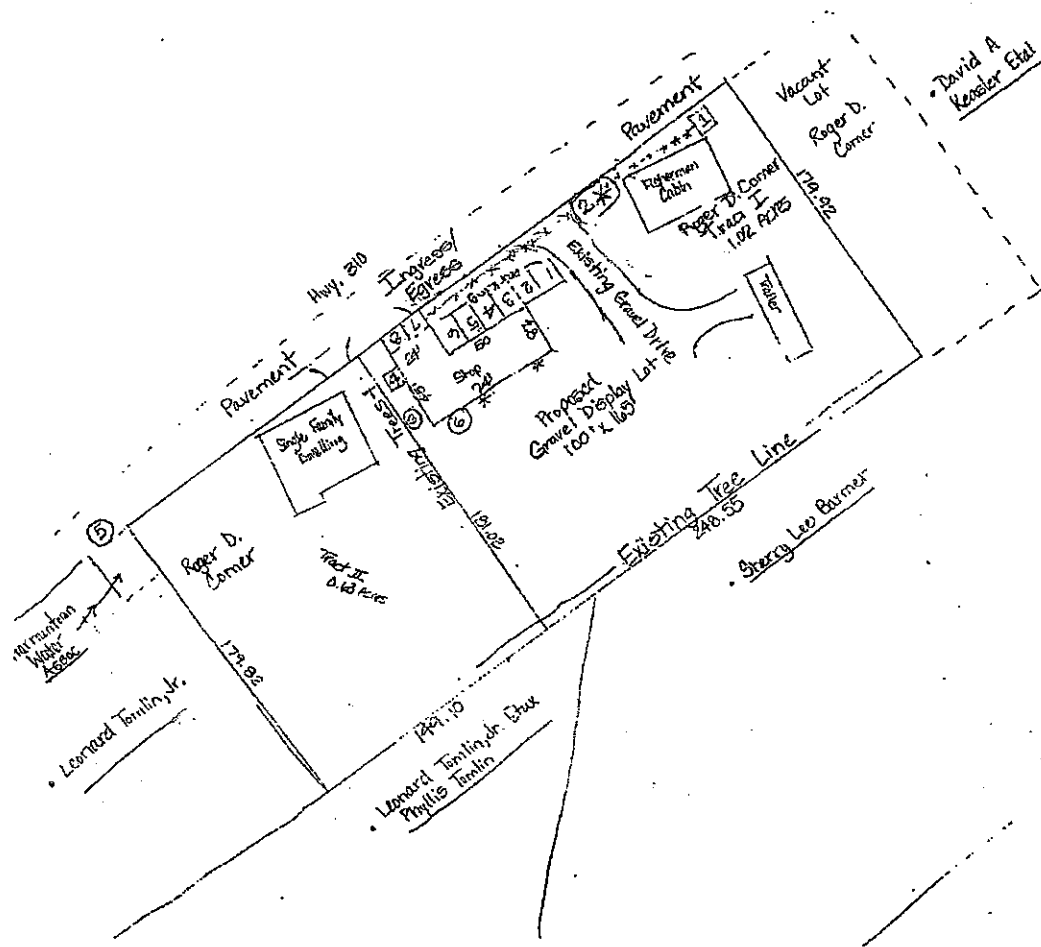


**Mike Roberts, President
Board of Supervisors**



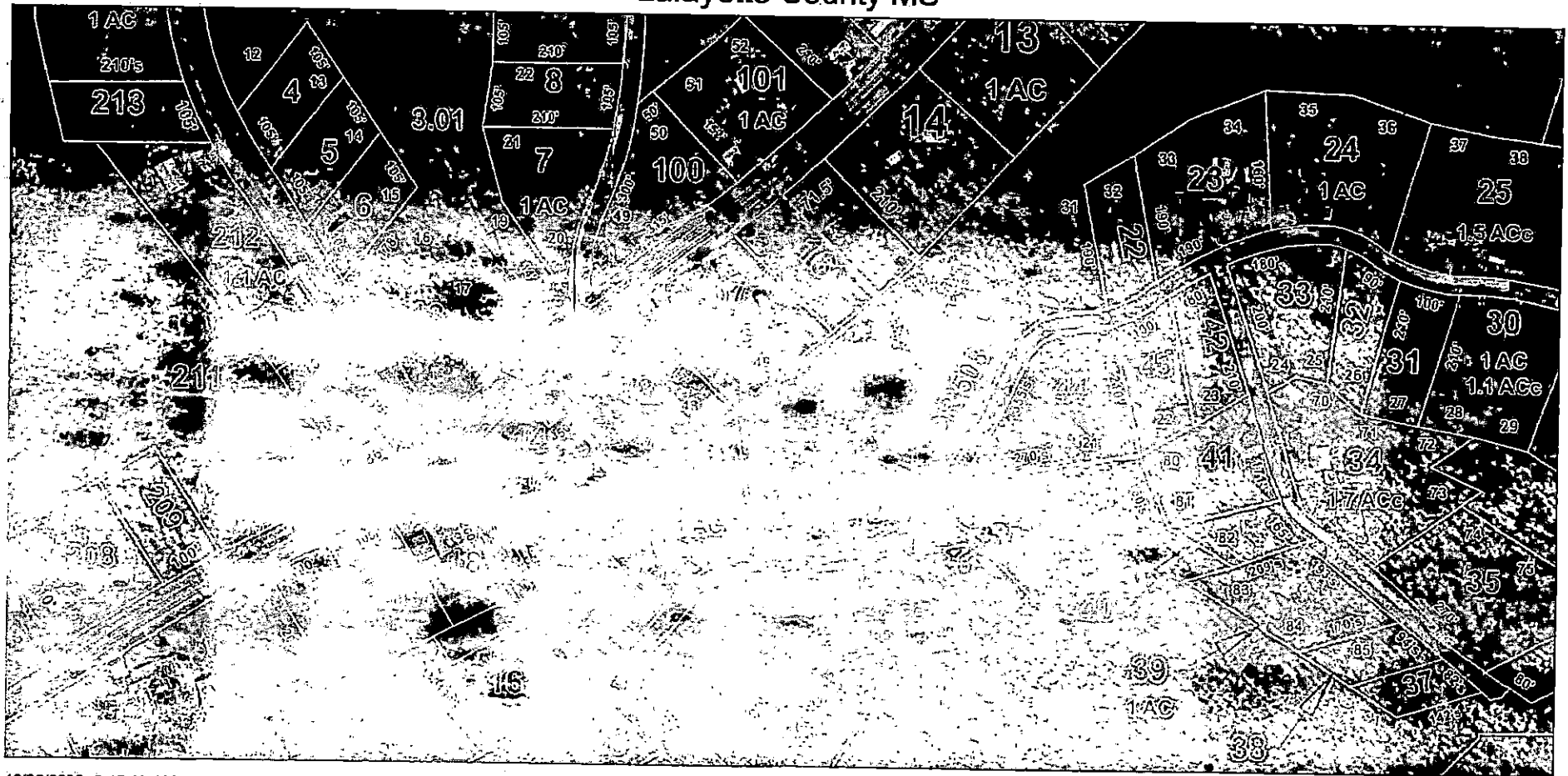
Sherry Wall, Chancery Clerk

Corner Auto + Repair
- Expansion for car sales lot



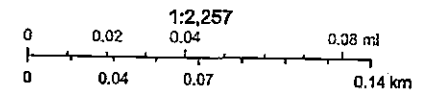
1. Existing Water Meter + service line - Harmonstown Water Assoc, provide
 2. Existing Security Light - on additional lights
 3. Power Pole - TVEPA, provider
 4. 220 Amp Electrical Service
 5. Fire Hydrant - 42' to Corner Property line
 6. Private Septic System
- 8 Parking Places in front of Shop
- Proposed Improvements
- 4x8 Building Sign
 - Gravel for car display lot
 - Approximately 100' x 165' area
 - dedicated for auto sales + overflow parking
 - * Lights on back of shop for security of display lot

Lafayette County MS



12/22/2020, 8:45:18 AM

- LandHook
- Leader
- SectionLine
- Parcels
- Imagery2019



Esri, HERE, Garmin, (c) OpenStreetMap contributors, and the GIS user community

Esri, HERE, Garmin, INCREMENT P, NOAA, USGS | Esri, HERE, Garmin, USGS, NOAA, EPA, USDA, NPS |

December 21, 2020

Lafayette County Building & Planning Department
300 N. Lamar Blvd, Oxford, MS 38655

Re: Comer Auto & Repair

Please accept this as an addendum to my submittals dated December 1, 2020 in regards to my conditional use request for the operation of a used car sales business at 591 Hwy 310 East, Como, MS.

My proposed plans are as follows:

- Up to 35 Vehicles displayed
- Sales lot will be gravel
- Hours of operation will be 8am-6pm Monday - Saturday
- Installation of a 4'x8' wood sign on the front of the shop (drawing attached)
- Existing office in shop will serve as auto sales office

There will not be any additional paving or building ^{construction} conditions required for this project.

Please find the following documents attached for review & consideration:

- Application for site plan approval & checklist
- Site plan
- Sign drawing info.
- List of adjacent property owners Noticed of public hearing

Respectfully,

Roger D. Comer

Roger D Comer



598 MS-310 Corvo, Mississippi

Google Earth

+

Google Earth

+

Google Earth

+

Google Earth

+

Google Earth

+

Google Earth

+

Google Earth

+

Google Earth

+

Google Earth

+

Google Earth

+

Google Earth

+

Google Earth

+

Google Earth

+

Google Earth

+

Google Earth

+

Google Earth

+

Google Earth

+

Google Earth

+

Google Earth

+

Google Earth

+

Google Earth

+

Google Earth

+

Google Earth

+

Google Earth

+

Google Earth

+

Google Earth

+

Google Earth

+

Google Earth

+

Google Earth

+

Google Earth

+

Google Earth

+

Google Earth

+

Google Earth

+

Google Earth

+

Google Earth

+

Google Earth

+

Google Earth

+

Google Earth

+

Google Earth

+

Google Earth

+

Google Earth

+

Google Earth

+