

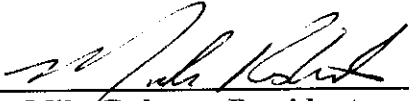
**ORDER: APPROVE WITHYWOOD RENTAL COMPLEX CONDITIONAL USE
PERMIT AND PRELIMINARY SITE PLAN**

Motion was made by Larry Gillespie, duly seconded by Brent Larson, to approve Withywood rental complex conditional use permit and preliminary site plan.

The vote on the motion was as follows:

Supervisor Brent Larson, voted yes
Supervisor Larry Gillespie, voted yes
Supervisor David Rikard, voted yes
Supervisor Chad McLarty, voted yes
Supervisor Mike Roberts, voted yes

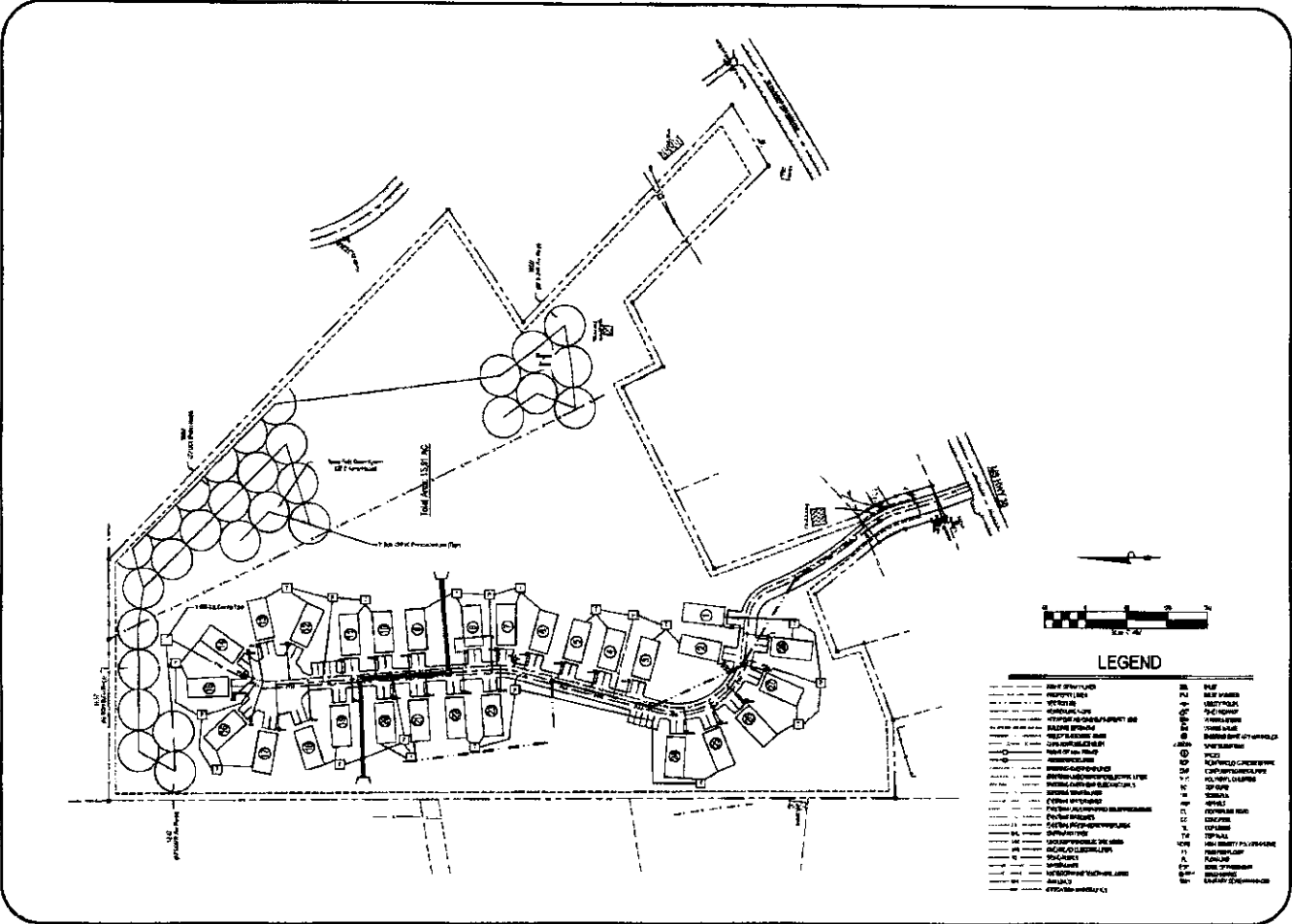
After the vote, President Roberts, declared the motion carried, this the 18th day of May, 2020.



**Mike Roberts, President
Board of Supervisors**



Sherry Wall, Chancery Clerk



LEGEND

<ul style="list-style-type: none"> Right of Way Property Line Easement Utility Lines Proposed Driveway Existing Driveway Public Street Access Point Proposed Building Existing Building Parking Space Water Main Sewer Main Gas Main Electric Main Fire Hydrant Street Light Tree Landscaping Survey Point Elevation Spot Elevation Proposed Storm Drain Existing Storm Drain Proposed Storm Pipe Existing Storm Pipe Proposed Storm Manhole Existing Storm Manhole Proposed Water Valve Existing Water Valve Proposed Sewer Valve Existing Sewer Valve Proposed Gas Valve Existing Gas Valve Proposed Electric Pole Existing Electric Pole Proposed Electric Conduit Existing Electric Conduit Proposed Gas Conduit Existing Gas Conduit Proposed Water Conduit Existing Water Conduit Proposed Sewer Conduit Existing Sewer Conduit Proposed Storm Conduit Existing Storm Conduit Proposed Storm Manhole Cover Existing Storm Manhole Cover Proposed Water Valve Cover Existing Water Valve Cover Proposed Sewer Valve Cover Existing Sewer Valve Cover Proposed Gas Valve Cover Existing Gas Valve Cover Proposed Electric Pole Top Existing Electric Pole Top Proposed Electric Pole Base Existing Electric Pole Base Proposed Gas Pole Top Existing Gas Pole Top Proposed Gas Pole Base Existing Gas Pole Base Proposed Water Pole Top Existing Water Pole Top Proposed Water Pole Base Existing Water Pole Base Proposed Sewer Pole Top Existing Sewer Pole Top Proposed Sewer Pole Base Existing Sewer Pole Base Proposed Storm Pole Top Existing Storm Pole Top Proposed Storm Pole Base Existing Storm Pole Base Proposed Storm Manhole Base Existing Storm Manhole Base Proposed Water Valve Base Existing Water Valve Base Proposed Sewer Valve Base Existing Sewer Valve Base Proposed Gas Valve Base Existing Gas Valve Base Proposed Electric Pole Crossarm Existing Electric Pole Crossarm Proposed Gas Pole Crossarm Existing Gas Pole Crossarm Proposed Water Pole Crossarm Existing Water Pole Crossarm Proposed Sewer Pole Crossarm Existing Sewer Pole Crossarm Proposed Storm Pole Crossarm Existing Storm Pole Crossarm 	<ul style="list-style-type: none"> Tree Landscaping Survey Point Elevation Spot Elevation Proposed Storm Drain Existing Storm Drain Proposed Storm Pipe Existing Storm Pipe Proposed Storm Manhole Existing Storm Manhole Proposed Water Valve Existing Water Valve Proposed Sewer Valve Existing Sewer Valve Proposed Gas Valve Existing Gas Valve Proposed Electric Pole Existing Electric Pole Proposed Electric Conduit Existing Electric Conduit Proposed Gas Conduit Existing Gas Conduit Proposed Water Conduit Existing Water Conduit Proposed Sewer Conduit Existing Sewer Conduit Proposed Storm Conduit Existing Storm Conduit Proposed Storm Manhole Cover Existing Storm Manhole Cover Proposed Water Valve Cover Existing Water Valve Cover Proposed Sewer Valve Cover Existing Sewer Valve Cover Proposed Gas Valve Cover Existing Gas Valve Cover Proposed Electric Pole Top Existing Electric Pole Top Proposed Electric Pole Base Existing Electric Pole Base Proposed Gas Pole Top Existing Gas Pole Top Proposed Gas Pole Base Existing Gas Pole Base Proposed Water Pole Top Existing Water Pole Top Proposed Water Pole Base Existing Water Pole Base Proposed Sewer Pole Top Existing Sewer Pole Top Proposed Sewer Pole Base Existing Sewer Pole Base Proposed Storm Pole Top Existing Storm Pole Top Proposed Storm Pole Base Existing Storm Pole Base Proposed Storm Manhole Base Existing Storm Manhole Base Proposed Water Valve Base Existing Water Valve Base Proposed Sewer Valve Base Existing Sewer Valve Base Proposed Gas Valve Base Existing Gas Valve Base Proposed Electric Pole Crossarm Existing Electric Pole Crossarm Proposed Gas Pole Crossarm Existing Gas Pole Crossarm Proposed Water Pole Crossarm Existing Water Pole Crossarm Proposed Sewer Pole Crossarm Existing Sewer Pole Crossarm Proposed Storm Pole Crossarm Existing Storm Pole Crossarm
---	---

WILLIAMS ENGINEERING CONSULTANTS, INC.
Professional Engineers | Professional Land Surveyors
1000 North Main Street, Suite 200, Tallahassee, Florida 32302
Phone: (904) 942-1111 | Fax: (904) 942-1112
www.williams-engineering.com

WILLIAMS ENGINEERING CONSULTANTS, INC.

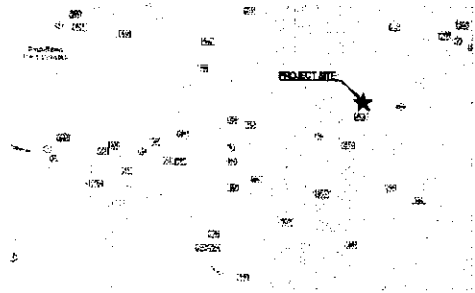
CONSTRUCTION PLANS FOR:
Residential Development
May 20, Lafayette County, Mississippi

UBS
LAYOUT

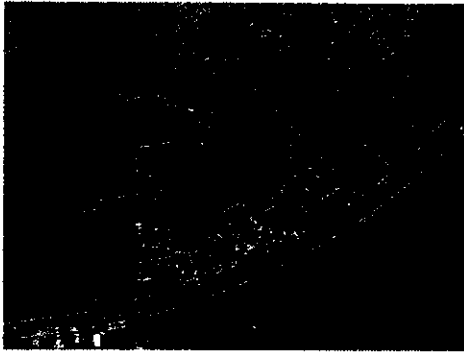
C 30



AERIAL PHOTO OF SURROUNDING AREAS



GENERAL MAP OF SURROUNDING AREAS



TAX MAP OF SURROUNDING AREAS

WILLIAMS ENGINEERING CONSULTANTS, INC.
Professional Engineers | Professional Land Surveyors

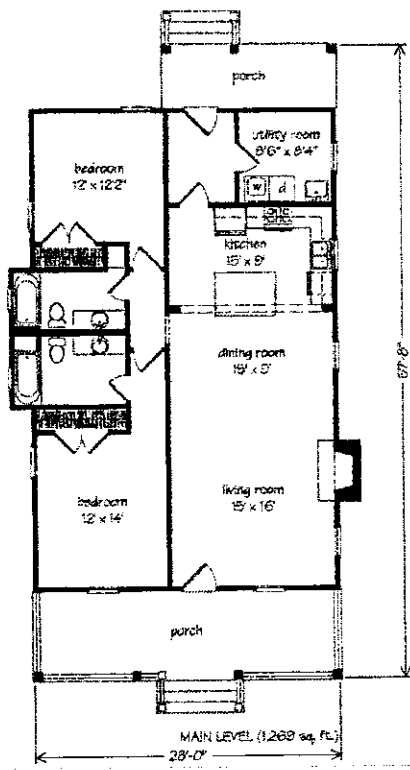


Contribution Plans For
Residential Development
May 30, Lafayette County, Mississippi

NO.	DATE	BY

Maps

C 11.0



WILLIAMS ENGINEERING CONSULTANTS, INC.
Professional Engineers | Professional Land Surveyors



Construction Plans For
Williamson
Baldwin County, Mississippi
149-201 Lafayette County, Mississippi

NO.	DATE	BY

Architectural
Plans

Sheet
A-1