

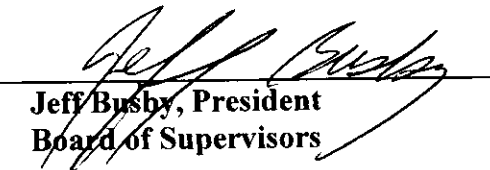
**ORDER: ACCEPT PLANNING COMMISSION'S RECOMMENDATION TO
APPROVE THE 333 CR 338 DIMENSIONAL VARIANCE REQUEST**

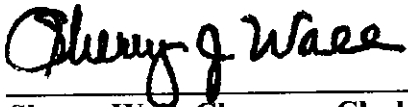
Motion was made by David Rikard, duly seconded by Mike Roberts, to accept Planning Commission's recommendation to approve the 333 CR 338 Dimensional Variance request with opaque fence.

The vote on the motion was as follows:

Supervisor Kevin Frye, voted yes
Supervisor Jeff Busby, voted yes
Supervisor David Rikard, voted yes
Supervisor Chad McLarty, voted yes
Supervisor Mike Roberts, voted yes

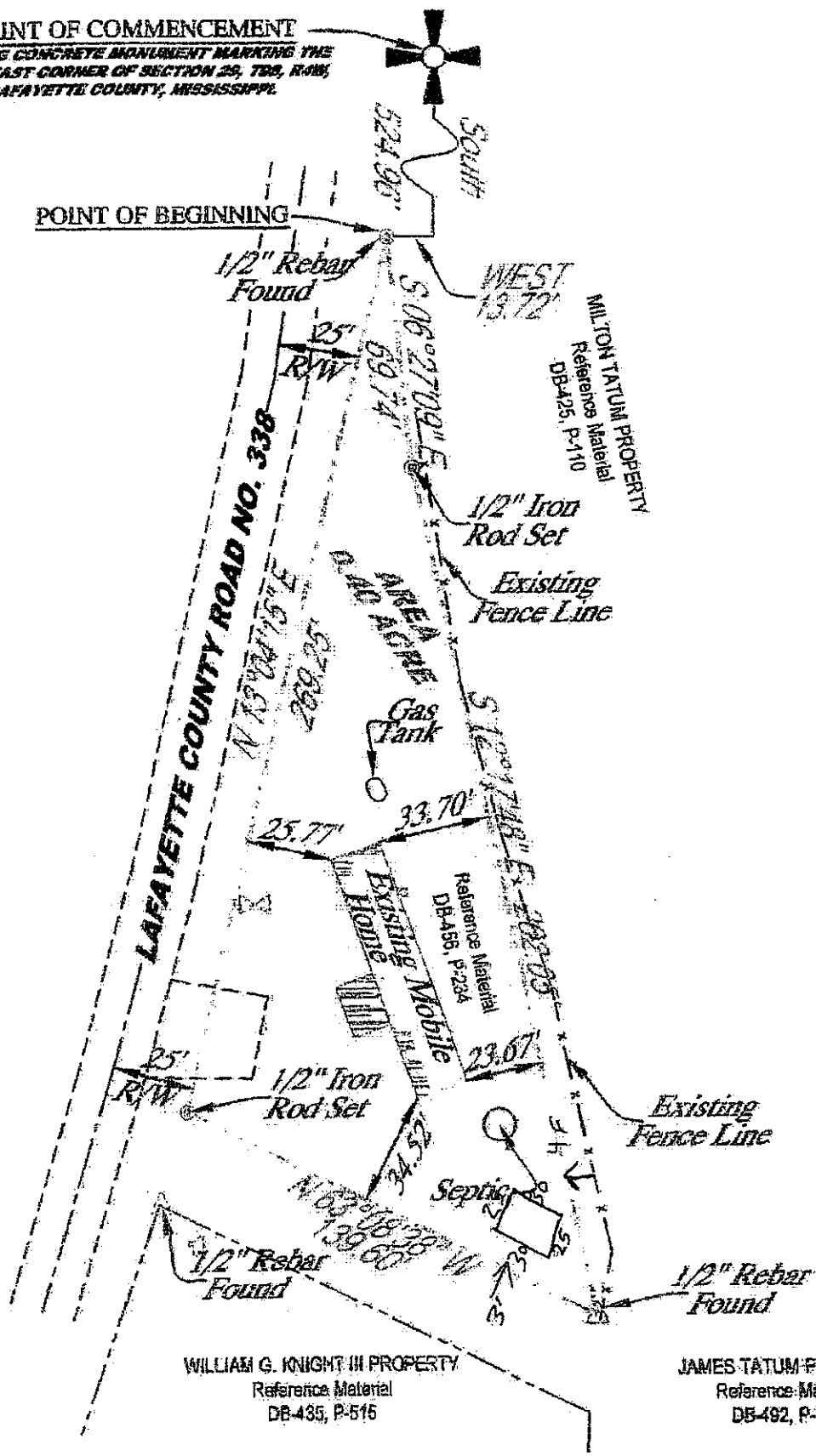
After the vote, President Busby, declared the motion carried, this the 19th day of August, 2019.


Jeff Busby, President
Board of Supervisors


Sherry Wall, Chancery Clerk

POINT OF COMMENCEMENT
 EXISTING CONCRETE MONUMENT MARKING THE
 NORTHEAST CORNER OF SECTION 29, T8S, R10E,
 LAFAYETTE COUNTY, MISSISSIPPI

POINT OF BEGINNING



WILLIAM G. KNIGHT III PROPERTY
 Reference Material
 DB-435, P-515

JAMES TATUM PROPERTY
 Reference Material
 DB-492, P-191