

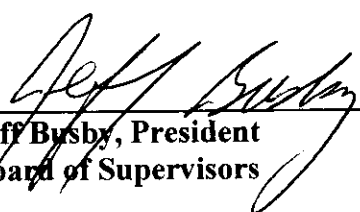
**ORDER: CLOSE PUBLIC HEARING ON CONDITIONAL USE PERMIT REQUEST
TO INSTALL A MANUFACTURED HOME IN AN R-2 DISTRICT AT 232 CR 217**

Motion was made by Chad McLarty, duly seconded by David Rikard, to close public hearing on Conditional Use permit request to install a manufactured home in an R-2 district at 232 CR 217.


The vote on the motion was as follows:

Supervisor Kevin Frye, voted yes
Supervisor Jeff Busby, voted yes
Supervisor David Rikard, voted yes
Supervisor Chad McLarty, voted yes
Supervisor Mike Roberts, voted yes

After the vote, President Busby, declared the motion carried, this the 19th day of August, 2019.



Jeff Busby, President
Board of Supervisors



Sherry Wall, Chancery Clerk

POLE, EXISTING CONCRETE MON
LOCALLY ACCEPTED AS THE
NORTH EAST CORNER OF THE
TOWNSHIP & RANGE 8 WEST
N 17° 04' 58" E
E 1766.244.91

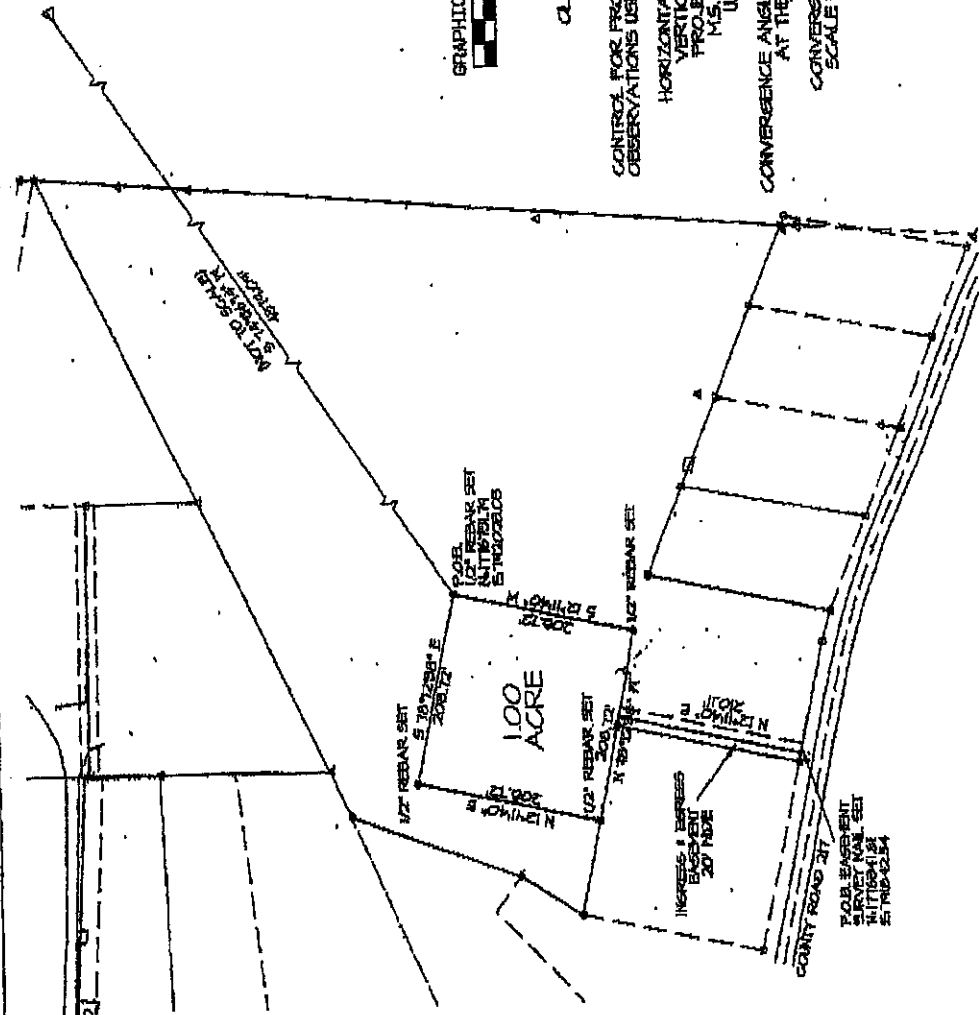


CLASS "C" SURVEY

CONTROL FOR PROJECT WAS DERIVED FROM GPS
OBSERVATIONS USING NB CORS STATION OXFORD
HORIZONTAL DATUM: NAD 83 (2011)
VERTICAL DATUM: NAVD 83
PROJECTION: STATE PLANE
M.S. EAST ZONE (2301)
U.S. SURVEY FEET

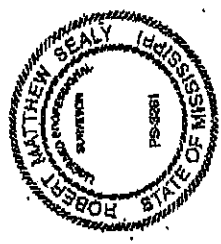
CONVERGENCE ANGLE AND GRID FACTOR CALCULATED
AT THE POINT OF BEGINNING
CONVERGENCE: (-) 00° 21' 32.1031"
SCALE FACTOR: 0.99993096

ROBERT MATTHEW SEALY SURVEYING, LLC	
147 CR 415 OXFORD, MISSISSIPPI	
SURVEY PLAN FOR	
COUNTY	
LAFAYETTE COUNTY, MISSISSIPPI	
PERMIT NO. 11, 2018	



NOTES: THIS PROPERTY SURVEY WAS PERFORMED
WITHOUT A TITLE SEARCH

- LEGEND**
- THICK SOLID LINE: BOUNDARY
 - EXISTING MONUMENTS
 - 1/2" REBAR SET
 - WATER METER
 - POWER POLES
 - LAMP POLES
 - PROPERTY LINES
 - EMERGENCY LINES
 - SETBACK LINES
 - OVERHEAD ELECTRIC LINES
 - FENCE LINE



Matt Sealy
Matt Sealy, PS-9281



DEED REFERENCE: DB 316, PG 222, DB 2015, PG 1402
DB 315, PG 16, DB 2011, PG 622, DB 2011, PG 322
PG 46, DB 2011, PG 322, DB 2011, PG 322, PG 622
DB 2011, PG 166, DB 2011, PG 166, DB 2011, PG 305