

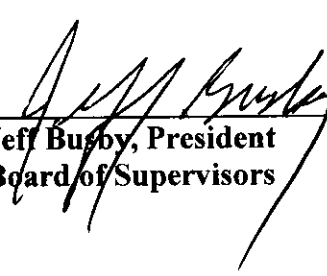
**ORDER: ACCEPT PLANNING COMMISSION RECOMMENDATION TO APPROVE
A CONDITIONAL USE PERMIT AND PRELIMINARY AND FINAL SITE PLAN
APPROVAL FOR THOMAS CAMPBELL BARBER SHOP**

Motion was made by Chad McLarty, duly seconded by Kevin Frye, to accept Planning Commission recommendation to approve a Conditional Use Permit and Preliminary and Final Site Plan approval for Thomas Campbell Barber Shop contingent on Fire Coordinator Wes Anderson's approval and limit hours of operation to begin at 8:00 a.m., nor more than two employees, and by appointment only.

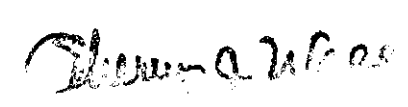
The vote on the motion was as follows:

Supervisor Kevin Frye, voted yes
Supervisor Jeff Busby, voted yes
Supervisor David Rikard, voted nay
Supervisor Chad McLarty, voted yes
Supervisor Mike Roberts, voted yes

After the vote, President Busby, declared the motion carried, this the 15th day of April, 2019.



Jeff Busby, President
Board of Supervisors



Sherry Wall, Chancery Clerk

8 County Road 4015
Oxford, Mississippi 38655



8 County Road 4015
Oxford, Mississippi 38655



Neighboring Land:
Philip R. Loria
Hwy 334
Oxford, MS 38655

Neighboring Land:
Bill Lamb
16 CR 4015
Oxford, MS 38655

Addition.
See
attached
floor plan

Neighboring Land:
James Gulleage
4 CR 4015
Oxford, MS 38655

Legend

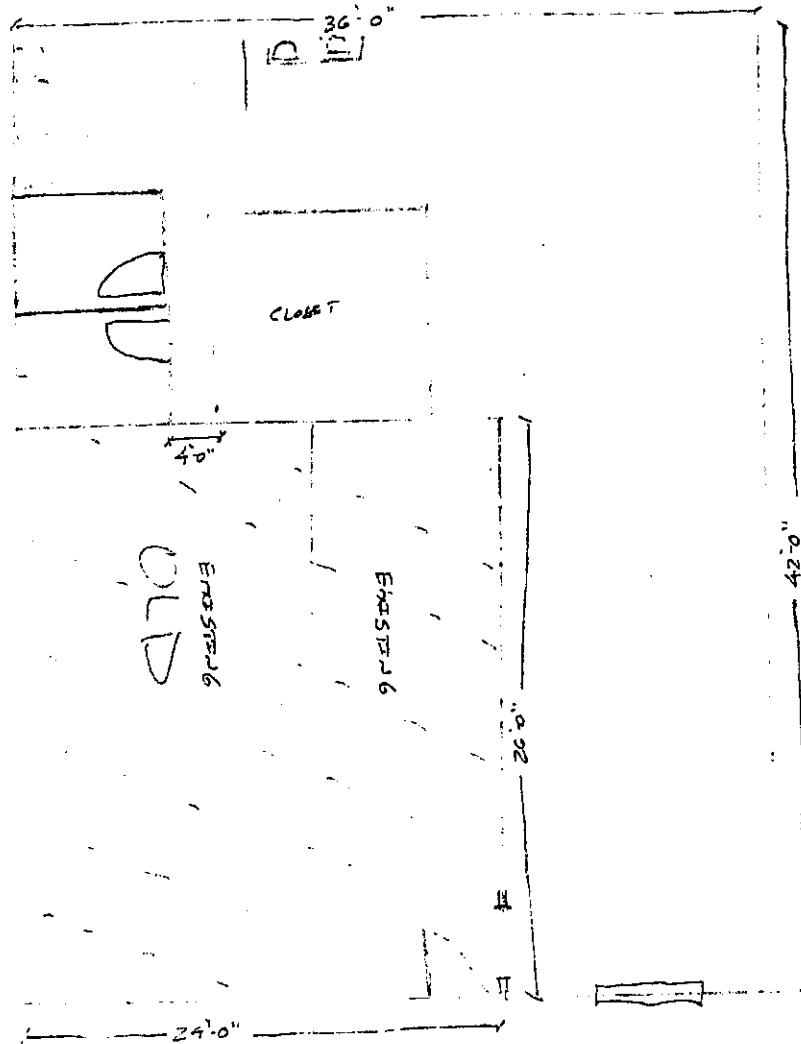
Property Line

Neighboring Land:
Kenneth Parkinson
11 CR 4015
Oxford, MS 38655

Site Plan
01/30/2019

200 ft





- 4' SLAB ON GRADE W/ 12" x 16"
- TURN DOWN FOOTER
- MASONITE SIDING

N →

Floor Plan