

**ORDER: APPROVE PLANNING COMMISSION RECOMMENDATION FOR C
STORE 1 PRELIMINARY AND FINAL SITE PLAN APPROVAL**

Motion was made by Chad McLarty, duly seconded by Mike Roberts, to approve Planning Commission recommendation for C Store 1 Preliminary and Final Site Plan approval subject to a striping change to yellow hatched area.


The vote on the motion was as follows:

Supervisor Kevin Frye, voted yes
Supervisor Jeff Busby, voted yes
Supervisor David Rikard, voted yes
Supervisor Chad McLarty, voted yes
Supervisor Mike Roberts, voted yes

After the vote, President Busby, declared the motion carried, this the 1st day of April, 2019.



Jeff Busby, President
Board of Supervisors



Sherry Wall, Chancery Clerk

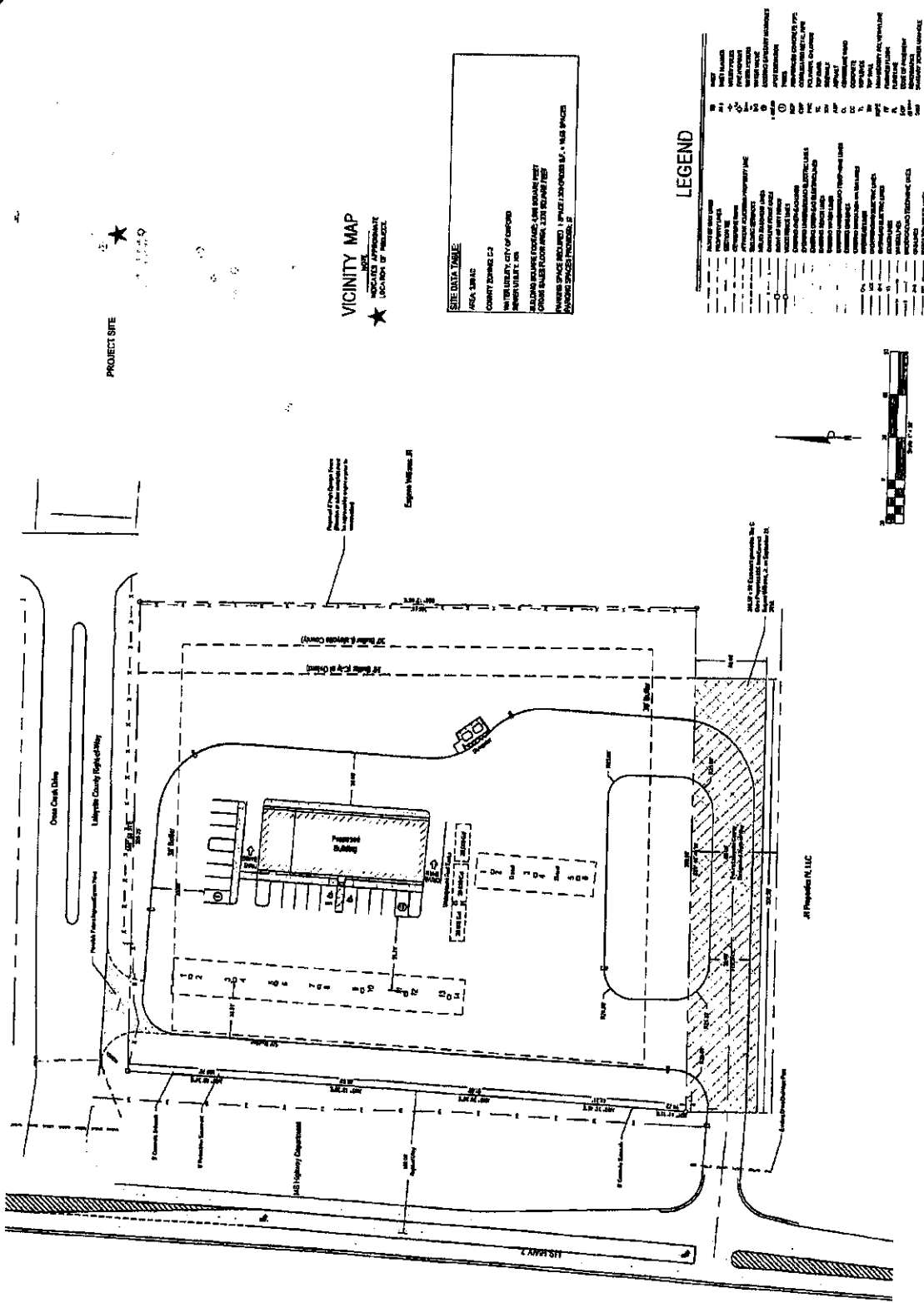
WILLIAMS ENGINEERING CONSULTANTS, INC.
Professional Engineers
Professional Land Surveyors



Construction Plans For
Stores (Gas Station)
Highway 1 South
Leflore County, Mississippi

NO.	DATE	DESCRIPTION
1	10/1/77	PRELIMINARY
2	10/1/77	REVISED
3	10/1/77	REVISED
4	10/1/77	REVISED
5	10/1/77	REVISED
6	10/1/77	REVISED
7	10/1/77	REVISED
8	10/1/77	REVISED
9	10/1/77	REVISED
10	10/1/77	REVISED
11	10/1/77	REVISED
12	10/1/77	REVISED
13	10/1/77	REVISED
14	10/1/77	REVISED
15	10/1/77	REVISED
16	10/1/77	REVISED
17	10/1/77	REVISED
18	10/1/77	REVISED
19	10/1/77	REVISED
20	10/1/77	REVISED
21	10/1/77	REVISED
22	10/1/77	REVISED
23	10/1/77	REVISED
24	10/1/77	REVISED
25	10/1/77	REVISED
26	10/1/77	REVISED
27	10/1/77	REVISED
28	10/1/77	REVISED
29	10/1/77	REVISED
30	10/1/77	REVISED
31	10/1/77	REVISED
32	10/1/77	REVISED
33	10/1/77	REVISED
34	10/1/77	REVISED
35	10/1/77	REVISED
36	10/1/77	REVISED
37	10/1/77	REVISED
38	10/1/77	REVISED
39	10/1/77	REVISED
40	10/1/77	REVISED
41	10/1/77	REVISED
42	10/1/77	REVISED
43	10/1/77	REVISED
44	10/1/77	REVISED
45	10/1/77	REVISED
46	10/1/77	REVISED
47	10/1/77	REVISED
48	10/1/77	REVISED
49	10/1/77	REVISED
50	10/1/77	REVISED
51	10/1/77	REVISED
52	10/1/77	REVISED
53	10/1/77	REVISED
54	10/1/77	REVISED
55	10/1/77	REVISED
56	10/1/77	REVISED
57	10/1/77	REVISED
58	10/1/77	REVISED
59	10/1/77	REVISED
60	10/1/77	REVISED
61	10/1/77	REVISED
62	10/1/77	REVISED
63	10/1/77	REVISED
64	10/1/77	REVISED
65	10/1/77	REVISED
66	10/1/77	REVISED
67	10/1/77	REVISED
68	10/1/77	REVISED
69	10/1/77	REVISED
70	10/1/77	REVISED
71	10/1/77	REVISED
72	10/1/77	REVISED
73	10/1/77	REVISED
74	10/1/77	REVISED
75	10/1/77	REVISED
76	10/1/77	REVISED
77	10/1/77	REVISED
78	10/1/77	REVISED
79	10/1/77	REVISED
80	10/1/77	REVISED
81	10/1/77	REVISED
82	10/1/77	REVISED
83	10/1/77	REVISED
84	10/1/77	REVISED
85	10/1/77	REVISED
86	10/1/77	REVISED
87	10/1/77	REVISED
88	10/1/77	REVISED
89	10/1/77	REVISED
90	10/1/77	REVISED
91	10/1/77	REVISED
92	10/1/77	REVISED
93	10/1/77	REVISED
94	10/1/77	REVISED
95	10/1/77	REVISED
96	10/1/77	REVISED
97	10/1/77	REVISED
98	10/1/77	REVISED
99	10/1/77	REVISED
100	10/1/77	REVISED

C 2.0



VICINITY MAP
LOCATES APPROXIMATE
LOCATION OF PROJECT

SITE DATA TABLE
AREA: 1.00 AC.
COUNTY: LEFLORE CO.
TOWNSHIP: 10 N.
RANGE: 10 E.
SECTION: 36
OWNER: J. J. JONES, JR.
PREPARED BY: WILLIAMS ENGINEERING CONSULTANTS, INC.
DATE: 10/1/77

LEGEND



T.W. ELLIOTT, PE/PS (1963-2011)
L.L. BRITT, PE/PS
KEVIN W. McLEOD, PE

ELLIOTT & BRITT ENGINEERING, P.A.
ENGINEERS - CONSULTANTS - SURVEYORS
823 N. LAMAR BLVD. - P. O. BOX 308
OXFORD, MISSISSIPPI 38655
eb@elliottbritt.com

TEL (662) 234-1763
FAX (662) 234-3835

March 26, 2019

Joey Moore c/o
Williams Engineering Consultants, Inc.
PO Box 1197
Oxford, MS 38655

RE: C-1 Proposed Preliminary and Final Site Plan
505 Highway 7 South
Oxford, MS

To Whom it May Concern:

At the Lafayette County Planning Commission meeting last night, the Commission approved the C-1 Store Preliminary and Final Site Plan. Specifically, the sewer layout and connection was approved as submitted. However, the Site Plan was approved subject to a striping change to allow the traffic to enter and leave the Crosscreek Subdivision entrance/exit without crossing the yellow hatched area as shown. This will be coordinated with the Owners, Engineer and MDOT to stripe a turn lane that creates a safe turning movement for the C-1 store and Crosscreek traffic.

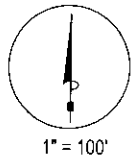
If you need any other information, please feel free to contact me office at 662-234-1763.
Sincerely,

ELLIOTT & BRITT ENGINEERING, P.A.

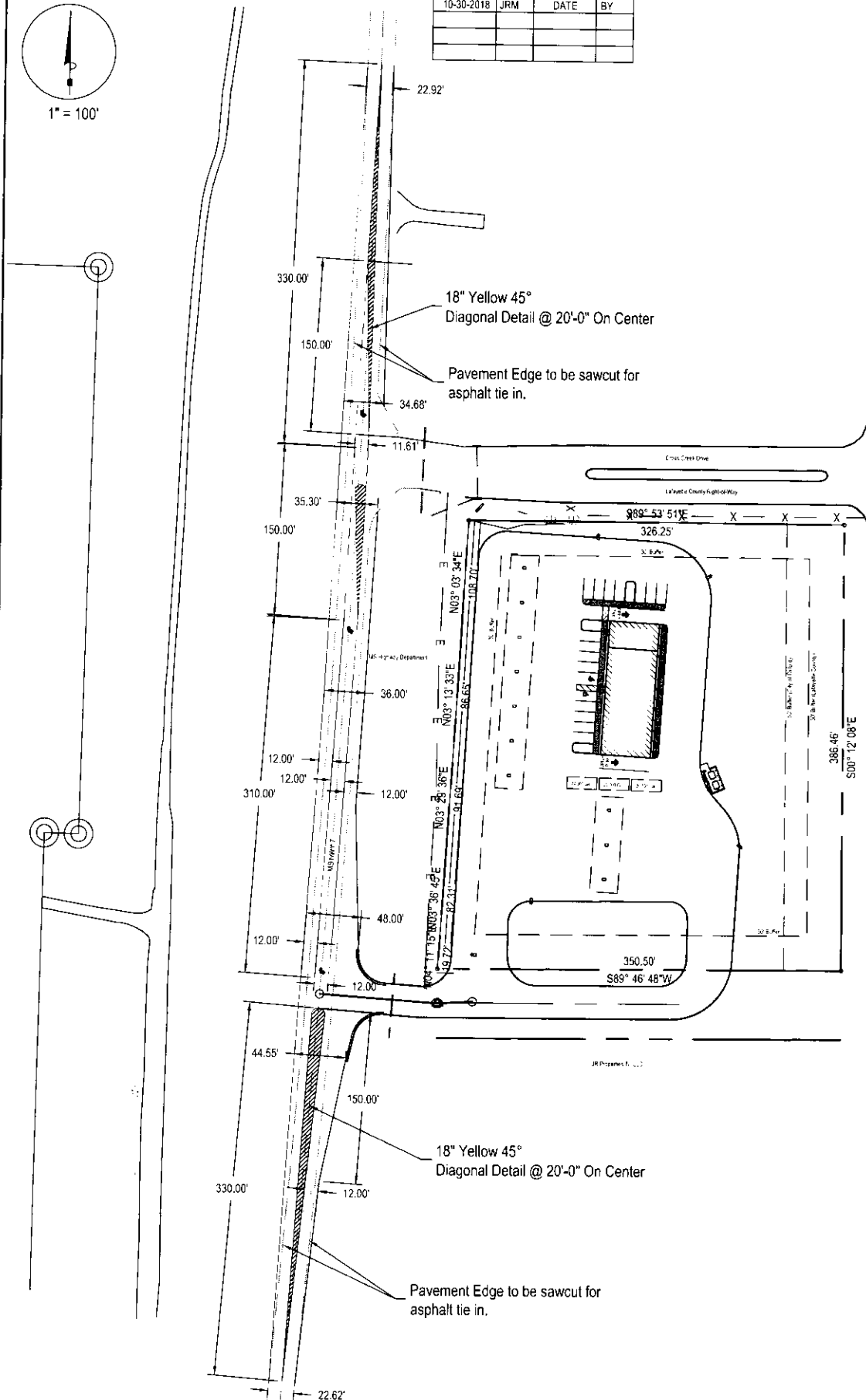


Larry L. Britt, PE/PS
County Engineer

Cc: T. J. Ray, President Lafayette County Planning Commission
Chad McLarty, Supervisor District 4
Joel Hollowell, Zoning Administrator



REVISIONS			
APPLICANT		MDOT	
10-30-2018	JRM	DATE	BY



NOTE: The required pipe opening was calculated by Williams Engineering Consultants, Inc. and sized appropriately. The Owner of the property shall accept all responsibility for maintenance and/or replacement due to any damage that may occur from flooding.