

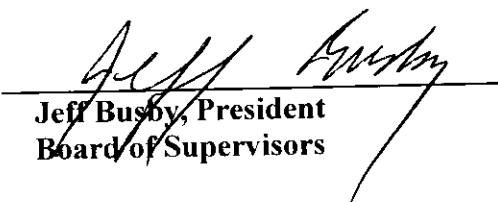
**ORDER: APPROVE PLANNING COMMISSION RECOMMENDATION FOR  
PEBBLE CREEK PHASE II FINAL SUBDIVISION PLAT APPROVAL**


Motion was made by Mike Roberts, duly seconded by Kevin Frye, to approve Planning Commission recommendation for Pebble Creek Phase II Final Subdivision Plat approval.

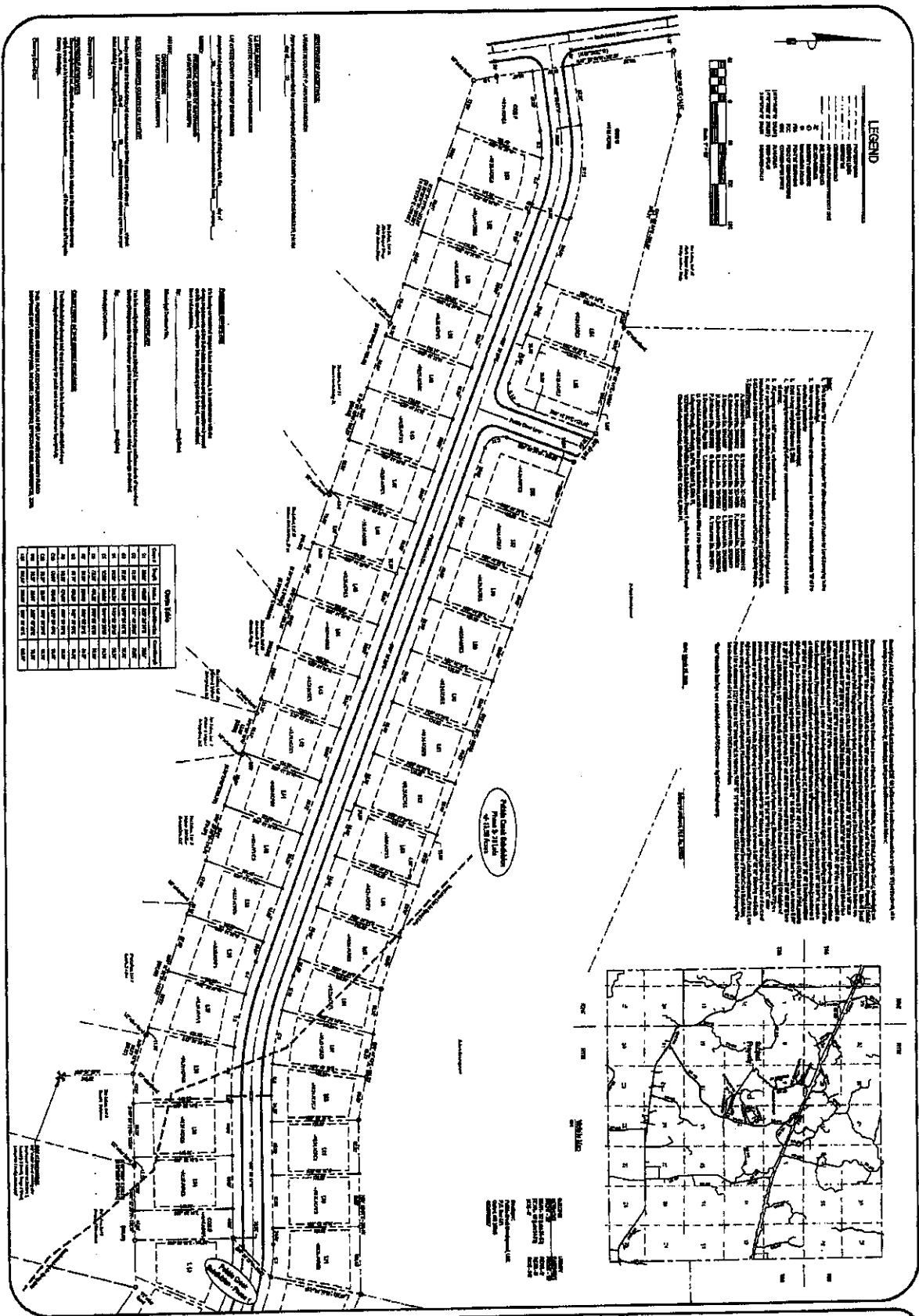
The vote on the motion was as follows:

Supervisor Kevin Frye, voted yes  
Supervisor Jeff Busby, voted yes  
Supervisor David Rikard, voted yes  
Supervisor Chad McLarty, voted yes  
Supervisor Mike Roberts, voted yes

After the vote, President Busby, declared the motion carried, this the  
1<sup>st</sup> day of April, 2019.

  
\_\_\_\_\_  
Jeff Busby, President  
Board of Supervisors

  
\_\_\_\_\_  
Sherry Wall, Chancery Clerk



**LEGEND**

--- Proposed Right-of-Way  
 --- Proposed Roadway  
 --- Proposed Lot Lines  
 --- Proposed Easements  
 --- Proposed Utilities  
 --- Proposed Structures  
 --- Proposed Fences  
 --- Proposed Trees  
 --- Proposed Water Features  
 --- Proposed Other Features

**NOTES**

1. This subdivision is subject to the terms and conditions of the plat for Pebble Creek Subdivision, Phase 1, recorded in the County of Leflore, Mississippi.

2. The area shown on this plat is not to be used for any purpose other than the residential use of the lots shown.

3. The area shown on this plat is not to be used for any purpose other than the residential use of the lots shown.

4. The area shown on this plat is not to be used for any purpose other than the residential use of the lots shown.

Lot	Area	Owner
1	0.10	John Doe
2	0.10	John Doe
3	0.10	John Doe
4	0.10	John Doe
5	0.10	John Doe
6	0.10	John Doe
7	0.10	John Doe
8	0.10	John Doe
9	0.10	John Doe
10	0.10	John Doe
11	0.10	John Doe
12	0.10	John Doe
13	0.10	John Doe
14	0.10	John Doe
15	0.10	John Doe
16	0.10	John Doe
17	0.10	John Doe
18	0.10	John Doe
19	0.10	John Doe
20	0.10	John Doe
21	0.10	John Doe
22	0.10	John Doe
23	0.10	John Doe
24	0.10	John Doe
25	0.10	John Doe
26	0.10	John Doe
27	0.10	John Doe
28	0.10	John Doe
29	0.10	John Doe
30	0.10	John Doe
31	0.10	John Doe
32	0.10	John Doe
33	0.10	John Doe
34	0.10	John Doe
35	0.10	John Doe
36	0.10	John Doe
37	0.10	John Doe
38	0.10	John Doe
39	0.10	John Doe
40	0.10	John Doe
41	0.10	John Doe
42	0.10	John Doe
43	0.10	John Doe
44	0.10	John Doe
45	0.10	John Doe
46	0.10	John Doe
47	0.10	John Doe
48	0.10	John Doe
49	0.10	John Doe
50	0.10	John Doe
51	0.10	John Doe
52	0.10	John Doe
53	0.10	John Doe
54	0.10	John Doe
55	0.10	John Doe
56	0.10	John Doe
57	0.10	John Doe
58	0.10	John Doe
59	0.10	John Doe
60	0.10	John Doe
61	0.10	John Doe
62	0.10	John Doe
63	0.10	John Doe
64	0.10	John Doe
65	0.10	John Doe
66	0.10	John Doe
67	0.10	John Doe
68	0.10	John Doe
69	0.10	John Doe
70	0.10	John Doe
71	0.10	John Doe
72	0.10	John Doe
73	0.10	John Doe
74	0.10	John Doe
75	0.10	John Doe
76	0.10	John Doe
77	0.10	John Doe
78	0.10	John Doe
79	0.10	John Doe
80	0.10	John Doe
81	0.10	John Doe
82	0.10	John Doe
83	0.10	John Doe
84	0.10	John Doe
85	0.10	John Doe
86	0.10	John Doe
87	0.10	John Doe
88	0.10	John Doe
89	0.10	John Doe
90	0.10	John Doe
91	0.10	John Doe
92	0.10	John Doe
93	0.10	John Doe
94	0.10	John Doe
95	0.10	John Doe
96	0.10	John Doe
97	0.10	John Doe
98	0.10	John Doe
99	0.10	John Doe
100	0.10	John Doe

