

**ORDER: ACCEPT PLANNING COMMISSION'S RECOMMENDATION TO  
APPROVE PRELIMINARY AND FINAL COMMERCIAL SITE PLAN  
FOR ALBRITON HIGHWAY SEVEN STORAGE**

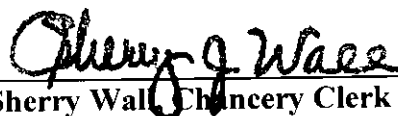
Motion was made by Chad McLarty, duly seconded by David Rikard, to accept the Planning Commission's recommendation to approve Preliminary and Final Commercial Site Plan for Albriton Hwy 7 Storage.

The vote on the motion was as follows:

Supervisor Kevin Frye, voted yes  
Supervisor Jeff Busby, voted yes  
Supervisor David Rikard, voted yes  
Supervisor Chad McLarty, voted yes  
Supervisor Mike Roberts, voted yes

After the vote, President Busby, declared the motion carried, this the 1<sup>st</sup> day of May, 2017.

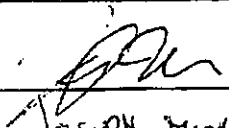
  
\_\_\_\_\_  
Jeff Busby, President  
Board of Supervisors

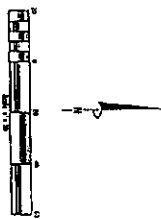
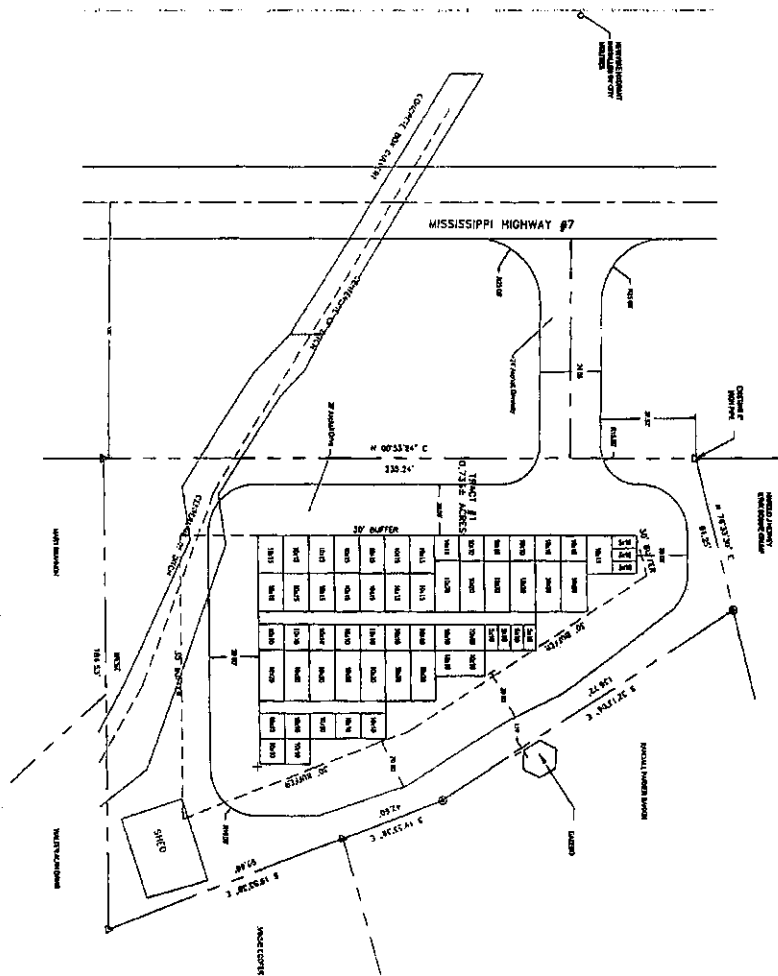
  
\_\_\_\_\_  
Sherry Wall, Chancery Clerk

**APPENDIX 1B**  
**APPLICATION FOR SITE PLAN APPROVAL PRELIMINARY AND OR FINAL**  
**for**  
**CONDOMINIUM, APARTMENT, COMMERCIAL COMPLEX DEVELOPMENT**  
**LAFAYETTE COUNTY PLANNING COMMISSION**

X Preliminary

X Final

<b>1. NAME OF DEVELOPMENT:</b> TYPE OF PROJECT: <u>Albriton - Hwy 7 Storage</u>		
<b>2. LOCATION:</b> The proposed development is located on the <u>East</u> side of <u>Hwy 7 S</u> Road and the _____ side of _____ Road, In Section <u>9</u> , Township <u>9-South</u> , and Range <u>3-West</u> .		
<b>3. Are there existing structures on the property?</b> <u>Yes</u> If so, please list on separate sheet. <u>One Shed</u>		
<b>4. Property owner:</b> <u>Randall Rankin</u> Address: <u>12 CR 401, Oxford, MS 38655</u> Telephone: _____ Fax: _____		
<b>5. Developer:</b> <u>John Albriton</u> Address: <u>3981 Old Jacksonville Hwy, Tyler, TX 75701</u> Telephone: <u>601-584-3774</u> Fax: _____		
<b>6. Engineer/Surveyor:</b> <u>Jeff Williams</u> Address: <u>720 North Lamar Blvd, Oxford, MS 38655</u> Telephone: <u>662-236-8675</u> Fax: <u>662-236-8677</u>		
<b>7. Gross Acreage</b> <u>0.736</u>	<b>8. Number of Lots or Units</b> <u>60</u>	<b>9. Average Frontage</b> <u>235.24'</u>
<b>10. Are Community or Public Sewers Provided?</b> Yes ___ No <u>N/A</u> By Whom: _____		
<b>11. Is Community or Public Water Provided?</b> Yes ___ No <u>N/A</u> By Whom: _____		
<b>12. Fee:</b> \$150 + \$5 per unit = \$ <u>155</u> Construction Inspection Fees per Article VII, Section = \$ _____		
<b>Signature of Owner, Developer, Agent, or Engineer:</b> <div style="text-align: right; margin-top: 20px;">           _____ (Signature)  <u>Joseph Moore</u> (Printed)  <u>11/3/16</u> (Date)       </div>		



**LEGEND**

1. 1/4" = 1' SCALE	2. 1/4" = 1' SCALE
3. 1/4" = 1' SCALE	4. 1/4" = 1' SCALE
5. 1/4" = 1' SCALE	6. 1/4" = 1' SCALE
7. 1/4" = 1' SCALE	8. 1/4" = 1' SCALE
9. 1/4" = 1' SCALE	10. 1/4" = 1' SCALE
11. 1/4" = 1' SCALE	12. 1/4" = 1' SCALE
13. 1/4" = 1' SCALE	14. 1/4" = 1' SCALE
15. 1/4" = 1' SCALE	16. 1/4" = 1' SCALE
17. 1/4" = 1' SCALE	18. 1/4" = 1' SCALE
19. 1/4" = 1' SCALE	20. 1/4" = 1' SCALE
21. 1/4" = 1' SCALE	22. 1/4" = 1' SCALE
23. 1/4" = 1' SCALE	24. 1/4" = 1' SCALE
25. 1/4" = 1' SCALE	26. 1/4" = 1' SCALE
27. 1/4" = 1' SCALE	28. 1/4" = 1' SCALE
29. 1/4" = 1' SCALE	30. 1/4" = 1' SCALE
31. 1/4" = 1' SCALE	32. 1/4" = 1' SCALE
33. 1/4" = 1' SCALE	34. 1/4" = 1' SCALE
35. 1/4" = 1' SCALE	36. 1/4" = 1' SCALE
37. 1/4" = 1' SCALE	38. 1/4" = 1' SCALE
39. 1/4" = 1' SCALE	40. 1/4" = 1' SCALE
41. 1/4" = 1' SCALE	42. 1/4" = 1' SCALE
43. 1/4" = 1' SCALE	44. 1/4" = 1' SCALE
45. 1/4" = 1' SCALE	46. 1/4" = 1' SCALE
47. 1/4" = 1' SCALE	48. 1/4" = 1' SCALE
49. 1/4" = 1' SCALE	50. 1/4" = 1' SCALE
51. 1/4" = 1' SCALE	52. 1/4" = 1' SCALE
53. 1/4" = 1' SCALE	54. 1/4" = 1' SCALE
55. 1/4" = 1' SCALE	56. 1/4" = 1' SCALE
57. 1/4" = 1' SCALE	58. 1/4" = 1' SCALE
59. 1/4" = 1' SCALE	60. 1/4" = 1' SCALE
61. 1/4" = 1' SCALE	62. 1/4" = 1' SCALE
63. 1/4" = 1' SCALE	64. 1/4" = 1' SCALE
65. 1/4" = 1' SCALE	66. 1/4" = 1' SCALE
67. 1/4" = 1' SCALE	68. 1/4" = 1' SCALE
69. 1/4" = 1' SCALE	70. 1/4" = 1' SCALE
71. 1/4" = 1' SCALE	72. 1/4" = 1' SCALE
73. 1/4" = 1' SCALE	74. 1/4" = 1' SCALE
75. 1/4" = 1' SCALE	76. 1/4" = 1' SCALE
77. 1/4" = 1' SCALE	78. 1/4" = 1' SCALE
79. 1/4" = 1' SCALE	80. 1/4" = 1' SCALE
81. 1/4" = 1' SCALE	82. 1/4" = 1' SCALE
83. 1/4" = 1' SCALE	84. 1/4" = 1' SCALE
85. 1/4" = 1' SCALE	86. 1/4" = 1' SCALE
87. 1/4" = 1' SCALE	88. 1/4" = 1' SCALE
89. 1/4" = 1' SCALE	90. 1/4" = 1' SCALE
91. 1/4" = 1' SCALE	92. 1/4" = 1' SCALE
93. 1/4" = 1' SCALE	94. 1/4" = 1' SCALE
95. 1/4" = 1' SCALE	96. 1/4" = 1' SCALE
97. 1/4" = 1' SCALE	98. 1/4" = 1' SCALE
99. 1/4" = 1' SCALE	100. 1/4" = 1' SCALE

C 20

Site

Layout

Construction Plans For:  
 Allerton - HWY 7 Storage  
 Southwest Quarter (SW 1/4) of Section 9, T-9-S, R-3-W  
 City of Oxford, Lafayette County, Mississippi



WILLIAMS ENGINEERING CONSULTANTS, INC.  
 Professional Engineers Professional Land Surveyors

121 NORTH LAMAR AVENUE, SUITE 100  
 P.O. BOX 1071 OXFORD, MS 38657-1071  
 662-222-1111