

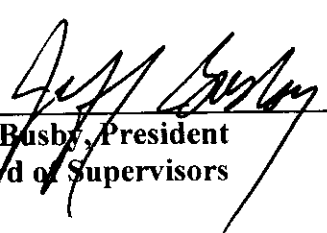
**ORDER: APPROVE PLANNING COMMISSION RECOMMENDATION OF
VARIANCE REQUEST FOR TEN FEET ON THE EXTENSION OF
BUILDING ON THE EAST SIDE FOR THE OXFORD EAGLE'S NEW
LOCATION**

Motion was made by Kevin Frye, duly seconded by Chad McLarty, to approve the Planning Commission's recommendation of a variance request for ten feet on the extension of building on the east side for the Oxford Eagle's new location.

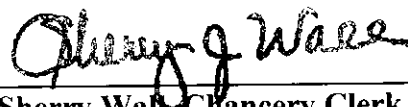
The vote on the motion was as follows:

Supervisor Kevin Frye. voted yes
Supervisor Jeff Busby. voted yes
Supervisor David Rikard, voted yes
Supervisor Chad McLarty. voted yes
Supervisor Mike Roberts. voted yes

After the vote, President Busby, declared the motion carried, this the 2nd day of May, 2016.



Jeff Busby, President
Board of Supervisors



Sherry Warr, Chancery Clerk

Final

(Date)

The Oxford EAGLE, Inc.
4 County Road 2050
Oxford, MS 38655

Lafayette County Planning Commission
April 25, 2016

Dear Committee Members:

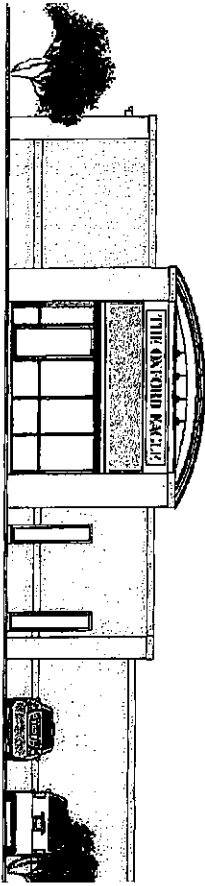
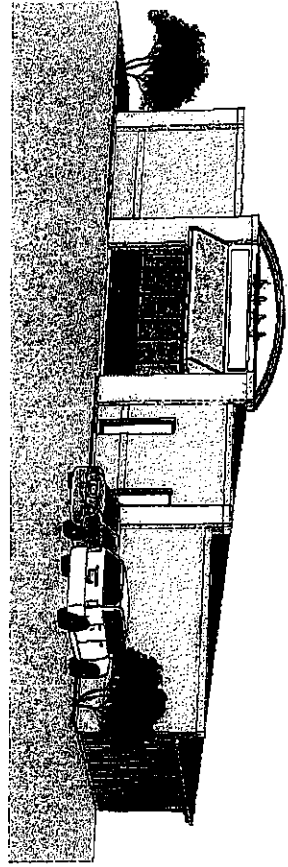
The Oxford EAGLE operating under Oxford Newsmedia, LLC plans on renovating the front facade of our new location on 4 County Road 2050.

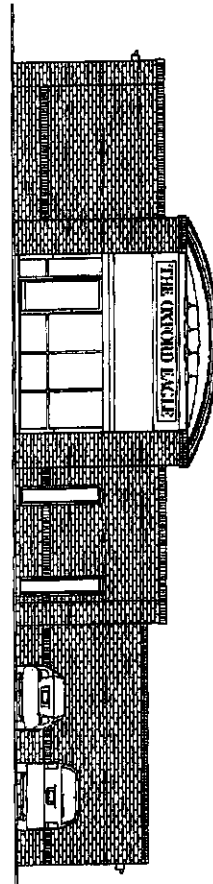
There are 14 parking spots located in the front of the building that will give ample room for our employees to park. We will also park between three-five vehicles on the side of the rear building where the pressroom will be attached.

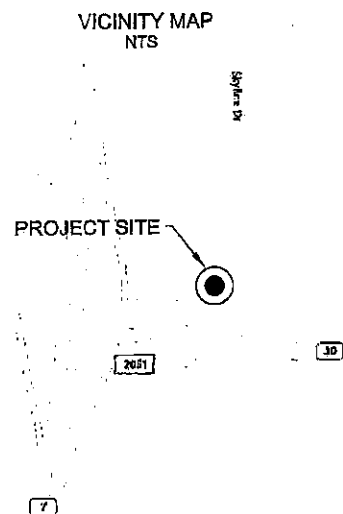
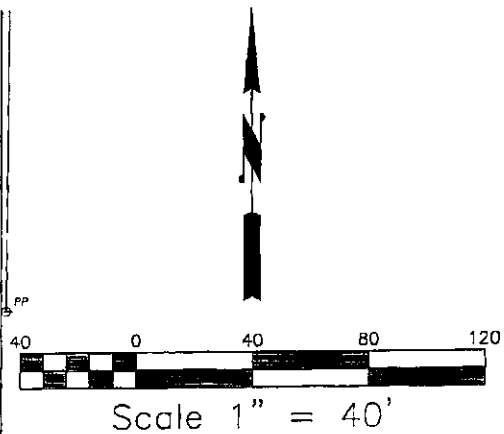
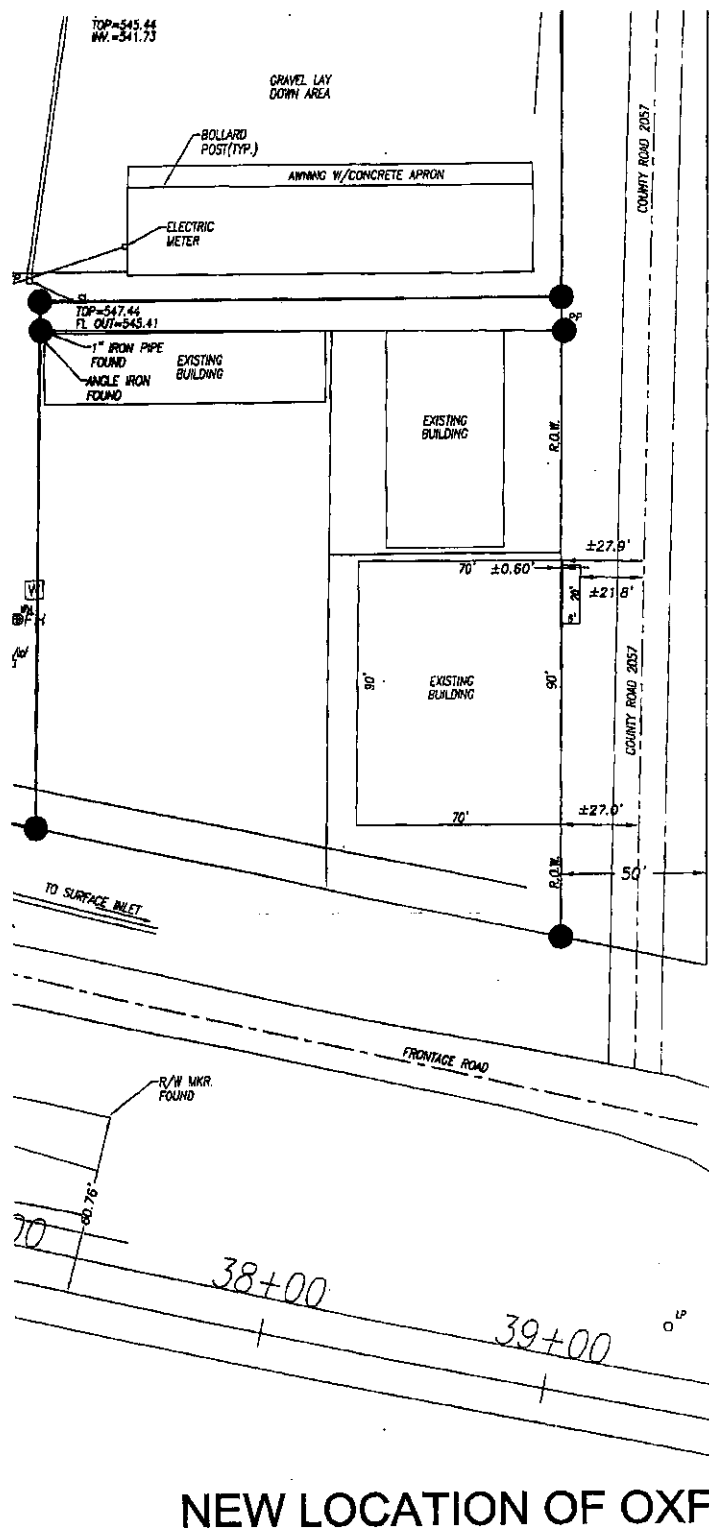
After being on the Oxford Square for so many years, we are looking forward to our move to the county to allow our employees free parking at all hours of the day.

Please let me know if you need any other information.

T. Phillips
Tim Phillips
Publisher







NEW LOCATION OF OXFORD EAGLE OXFORD, MS

THIS IS NOT A SURVEY
FOR PLANNING PURPOSES ONLY