

**ORDER: APPROVE TRANSFER OF ADDITIONAL FUNDS TO
CONTINGENCIES FOR STATE AID PROJECT NUMBER
LSBP-36(25)**

Motion was made by Chad McLarty, duly seconded by Mike Roberts, to approve the transfer of additional funds to contingencies for State Aid Project number LSBP-36(25).

The vote on the motion was as follows:

Supervisor Kevin Frye, voted yes
Supervisor Jeff Busby, voted yes
Supervisor David Rikard, voted yes
Supervisor Chad McLarty, voted yes
Supervisor Mike Roberts, voted yes

After the vote, President Busby, declared the motion carried, this the 2nd day of May, 2016.


Jeff Busby, President
Board of Supervisors


Sherry Walk, Chancery Clerk

ORDER OF THE BOARD OF SUPERVISORS OF
LAFAYETTE COUNTY AUTHORIZING THE TRANSFER OF ADDITIONAL
STATE AID FUNDS TO COMPLETE PROJECT NO. LSBP-36(25)

WHEREAS, the project fund originally established for the above project by
the Board of Supervisors of Lafayette County has been determined to be
insufficient to cover the cost of work,

NOW THEREFORE, it is ordered by the Board of Supervisors of
Lafayette County, that the State Aid Engineer be and he is hereby
authorized to transfer the sum of \$ 20,000.00 from Lafayette
County's State Aid Fund to the State Highway Fund and earmarked for the above
Project.

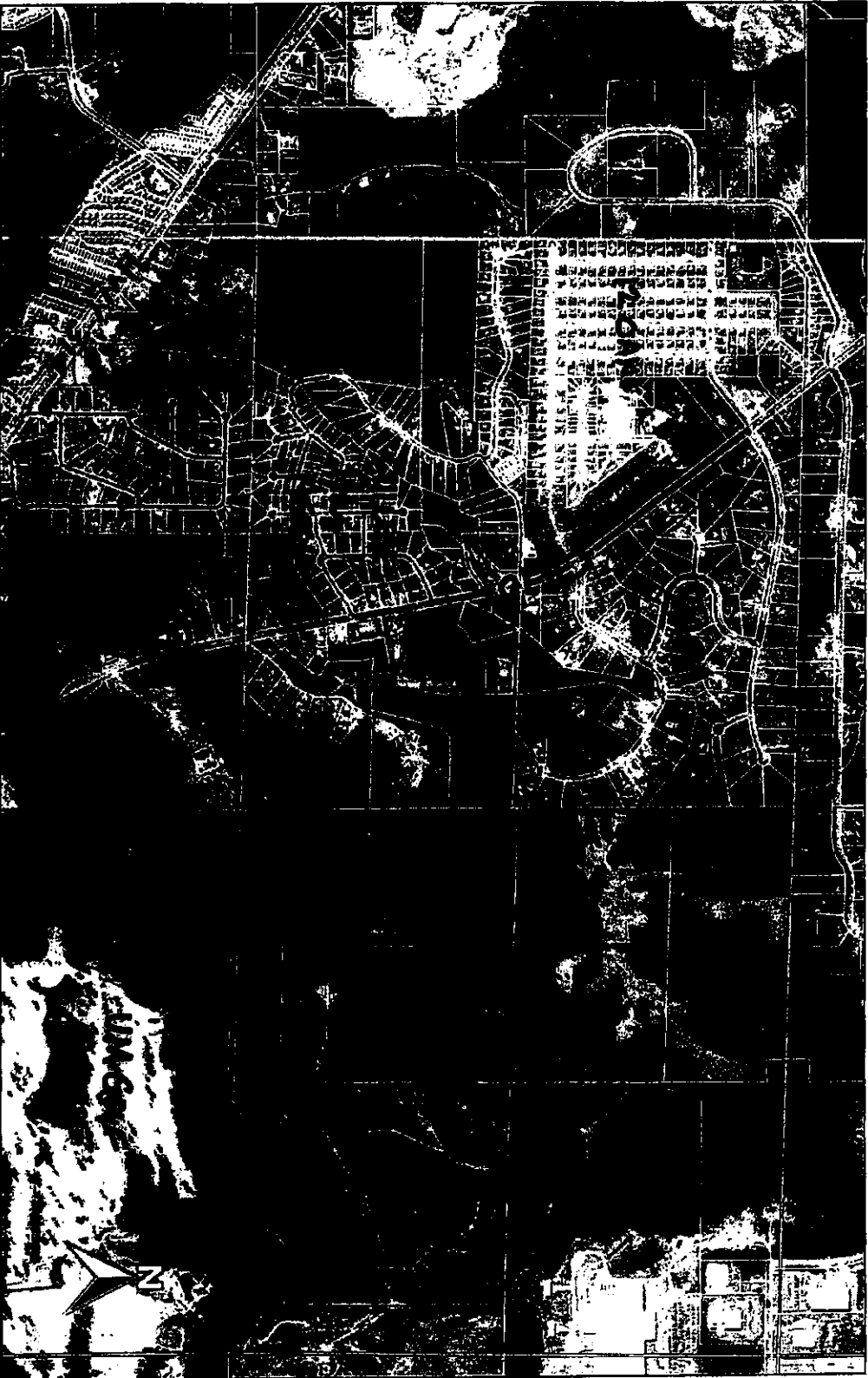
IT IS FUTHER ORDERED that the Clerk of this Board send the State Aid
Engineer a certified copy of this order.

President, Board of Supervisors
Lafayette County, Mississippi

This is to certify that the foregoing is a true and correct copy of an order passed by the
Board of Supervisors of Lafayette County, Mississippi, entered into the
minutes of the Board of Supervisors, Minute Book No. _____, Page No. _____,
same having been adopted at a meeting of said Board of Supervisors on the _____
day of _____, _____.

Clerk of the Board of Supervisors
Lafayette County, Mississippi

Upton Reynolds Rentals Vicinity Map



200 m
600 ft


Apr/20/2016
Scale 1:9027

The materials available at this web site are for informational purposes only and do not constitute a legal document.



PROPOSED
BUILDING

1	SITE LAYOUT	DATE: 7-1-07 TIME: 0800HRS FIC: Project: Drawn By: JMM Checked By: JMM Scale: 1"=100'	REVISION DATE
		SITE LAYOUT FOR: UPTON REYNOLDS COLLEGE HILL ROAD LAFAYETTE COUNTY, MISSISSIPPI	



WILLIAMS ENGINEERING CONSULTANTS, INC.
 Professional Engineers | Professional Land Surveyors
725 NORTH LAMAR BOULEVARD, SUITE A
 P.O. BOX 1187, COFFEE, MISSISSIPPI 38925
 662.231.2679